

Glacken Field Renovation

Community Meeting 2 November 7, 2019

CAMBRIDGE
DEPARTMENT
OF PUBLIC
**THE
WORKS**

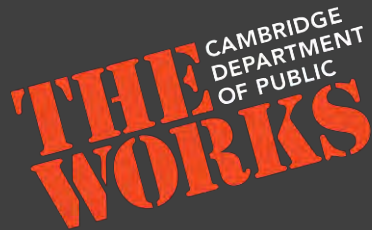


Agenda

- Introductions
- Project Overview & Status Update
- Tot Lot and Site Conceptual Design
- Next Steps
- Questions & Contact
- Breakout

Introductions

CITY STAFF



Kathy Watkins – City Engineer

Kara Falise – Project Manager

Kate Riley – Community Relations Manager

DESIGN TEAM



Project Overview

PLAYING FIELDS

- Design upgrade supports Little League field relocation from Tobin School

TOT LOT AND SITE IMPROVEMENTS

- Design of the Tot Lot and Site improvements based on user feedback



Project Overview

TOBIN SCHOOL

Construction: July 2020

Estimated Completion: Sept 2024

Community Meeting:
Wednesday, November 13th, 6:30 pm
at the Tobin School Auditorium

For more information:

<https://www.cambridgema.gov/Departments/citymanagersoffice/tobinschoolproject>

or contact:

Kate Riley at kriley@cambridgema.gov or 617-349-4870



Project Overview

GLACKEN FIELD



Project Overview

Coordination with:

- Department of Human Service Programs (DHSP)
- Parks Department
- Water Department
- Fresh Pond Golf Course
- MBTA



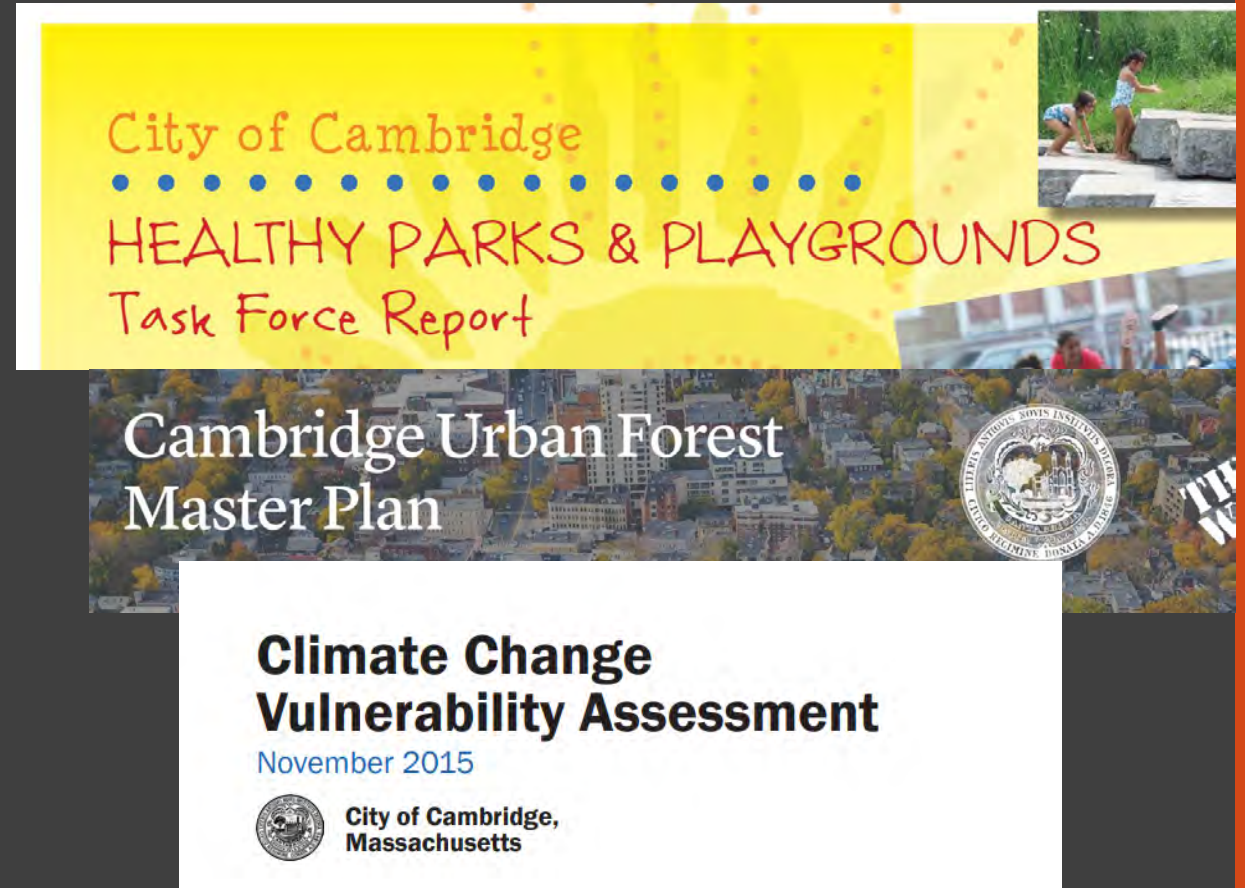
Project Overview

Coordination with Citywide Initiatives
Such as:

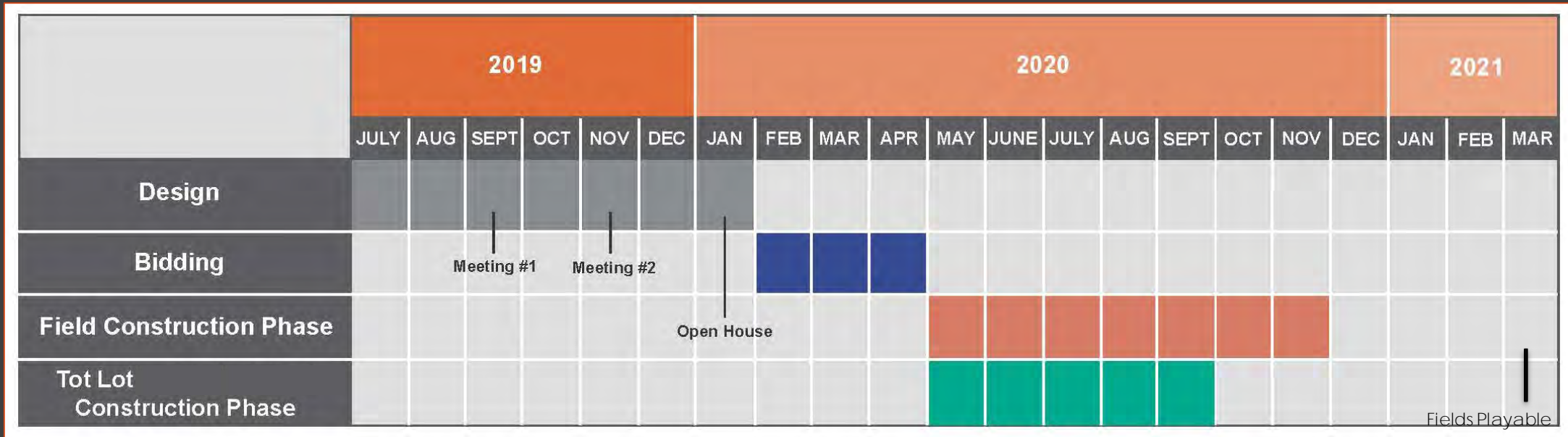
- Healthy Parks and Playgrounds
- Climate Change and Resiliency Planning
- Urban Forest Master Plan
- Fresh Pond Master Plan
- 1% for Art

AND

- Existing Users
- Proposed Users
- Neighborhood Groups



Project Timeline



Project Update:

Community Outreach

- Community Meeting #1
- Visits to Tot Lot
- User Survey Completed
- Internal Design Review Meetings
- User Group Meetings

Design Progress

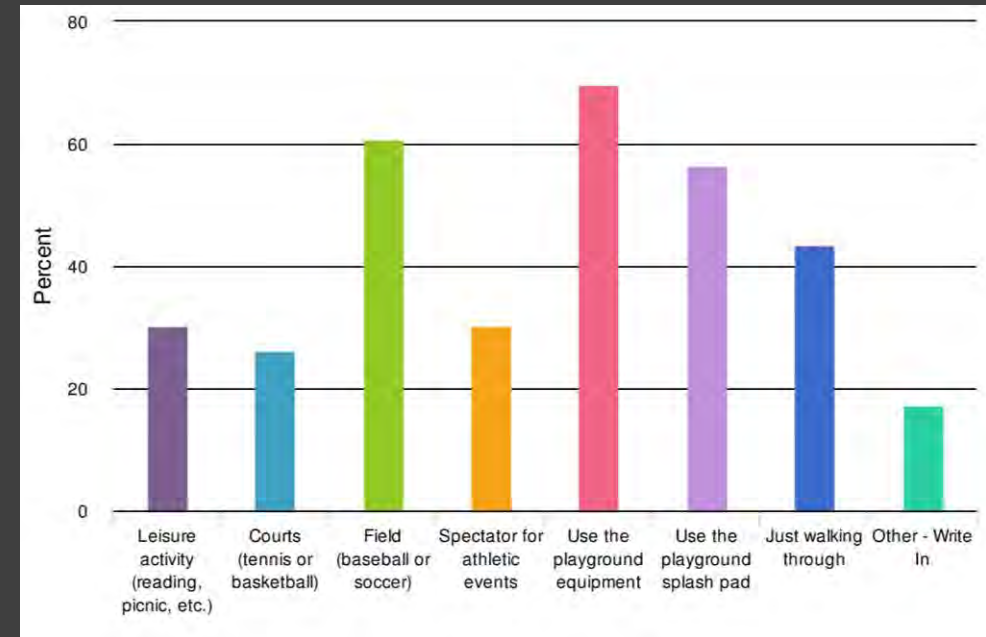
- Addressing Community Input
- Evaluating site grading/layout
- Tot-lot Conceptual Design
- Site continuity

Status Update – User Feedback

What changes to the Tot Lot and waterplay area do people want to see?



What do people do at Glacken Field?





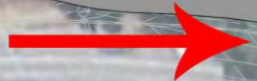
**IMPROVED
CONNECTIVITY
TO TENNIS
COURTS**

**PARK SPACE/
INFORMAL PLAY AREA**

**REIMAGINED
TOT-LOT**

**SIDEWALK
CONNECTION**

**CONNECTION TO FRESH
POND PARKWAY**



PLAYING FIELD CONCEPT



Playing Fields

PLAYING FIELD CONCEPT

- 2 Little League fields
- Remove existing concrete bleachers improving connections to courts and to Huron Ave
- Spectator seating
- Perimeter walking path
- Landscape improvements/tree plantings
- Informal park space
- Improved connection from Huron Ave with ADA accessibility
- Tot Lot improvements



Playing Fields



Playing Fields: Standard Amenities





**IMPROVED
CONNECTIVITY
TO TENNIS
COURTS**

**PARK SPACE/
INFORMAL
PLAY AREA**

**REIMAGINED
TOT-LOT**

**SIDEWALK
CONNECTION**

**CONNECTION TO FRESH
POND PARKWAY**

PLAYING FIELD CONCEPT: Bleacher removal





**IMPROVED
CONNECTIVITY
TO TENNIS
COURTS**

**PARK SPACE/
INFORMAL PLAY AREA**

**REIMAGINED
TOT-LOT**

**SIDEWALK
CONNECTION**

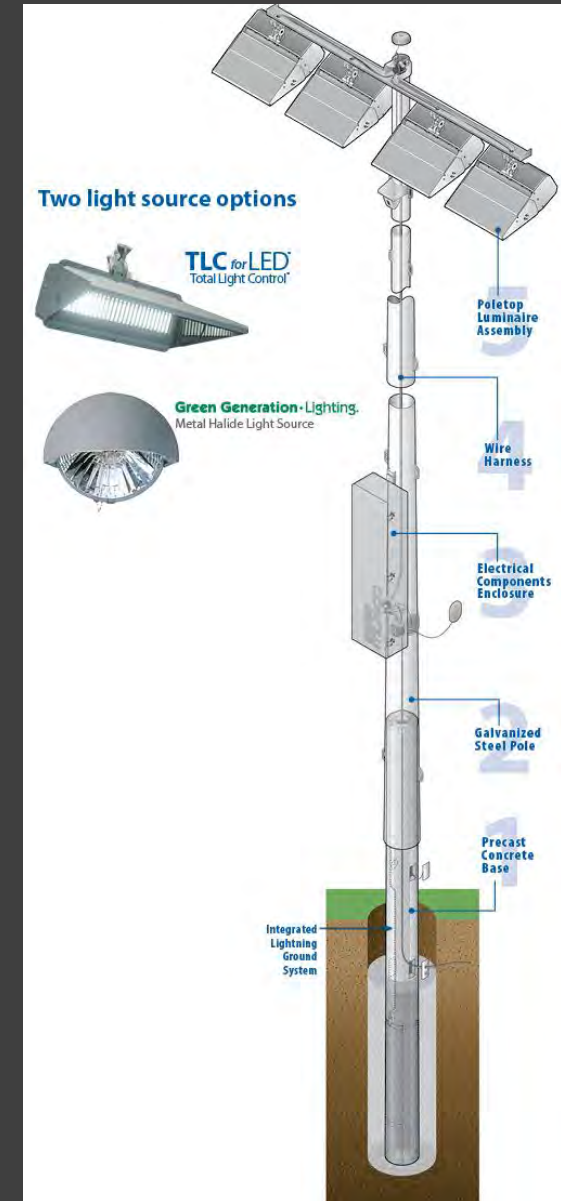
**CONNECTION TO FRESH
POND PARKWAY**

PLAYING FIELD CONCEPT : Athletic Field Lighting



Playing Fields

Athletic field lighting for one Little League field is being considered





**IMPROVED
CONNECTIVITY
TO TENNIS
COURTS**

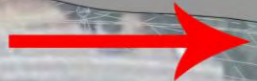
**PARK SPACE/
INFORMAL PLAY AREA**

**REIMAGINED
TOT-LOT**

**SIDEWALK
CONNECTION**

**CONNECTION TO FRESH
POND PARKWAY**

PLAYING FIELD CONCEPT: Connectivity





**IMPROVED
CONNECTIVITY
TO TENNIS
COURTS**

**PARK SPACE/
INFORMAL PLAY AREA**

**REIMAGINED
TOT-LOT**

**SIDEWALK
CONNECTION**

**CONNECTION TO FRESH
POND PARKWAY**

PLAYING FIELD CONCEPT: Fencing and Athletic Ballnetting



Existing Tot Lot



In its current state, the Tot Lot offers limited play because of:

- Dated structures
- Limited ADA accessibility

Current design does not fully align with City's Healthy Play Initiative

Tot Lot and Site Goals

- Design specific to Fresh Pond
- Park that is FUN
 - Range of accessible & inclusive play options
 - Community spaces
 - Improved pedestrian circulation
- Collaborative design process



The Healthy Parks and Playgrounds initiative aims to provide diverse play opportunities throughout the City that are fun, physically challenging, creatively stimulating and socially engaging, and that serve all different age groups, abilities and interests.

A photograph of a playground featuring large, hollowed-out logs. Three children are playing: one is climbing a log on the left, another is running in the middle, and a third is crawling through a large log tunnel on the right. The ground is covered in wood chips, and there are trees in the background.

Design Specific to Fresh Pond

Connect to nature and history in a thoughtful way.

Park that is FUN

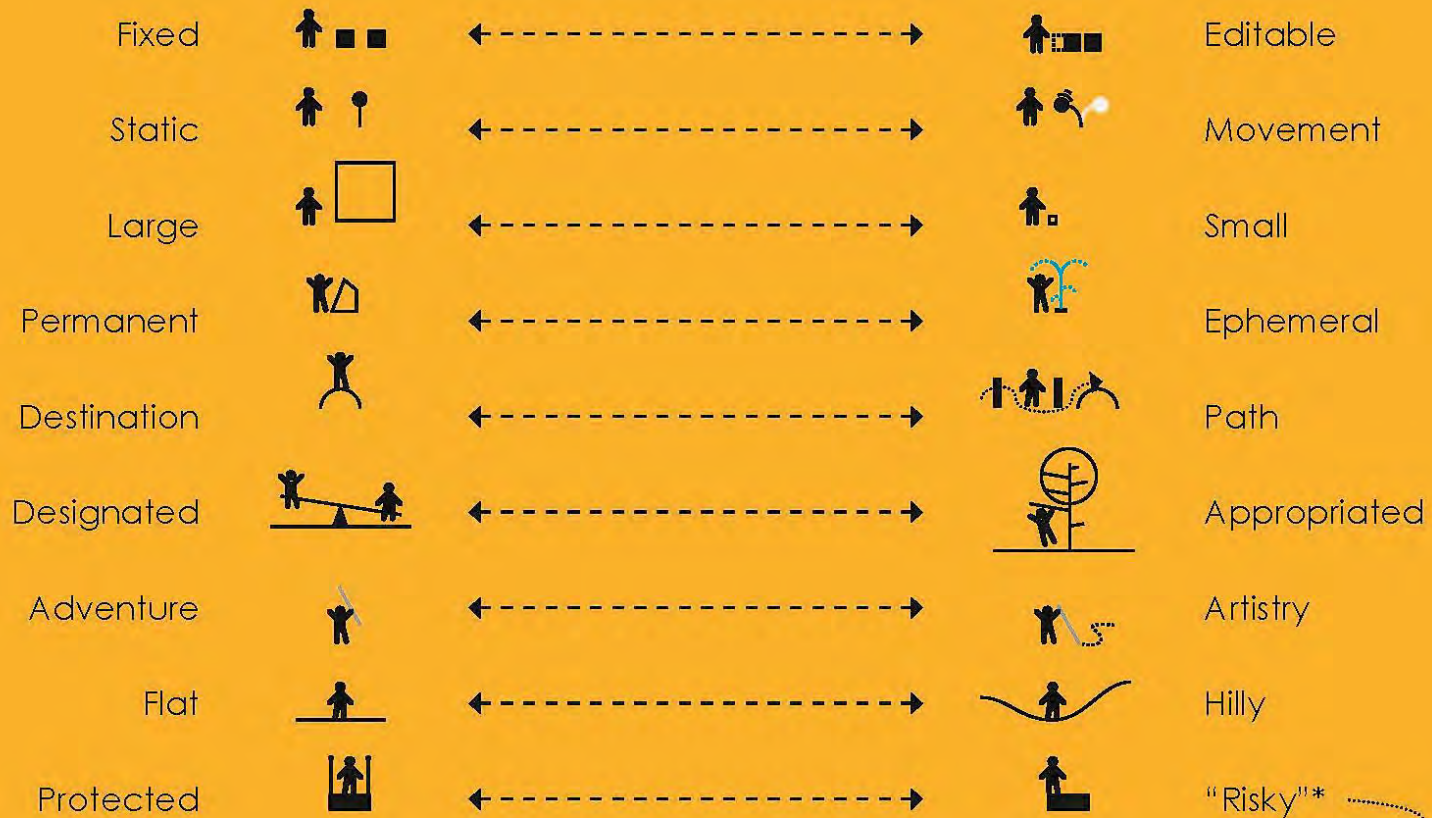


Park filled with energy, excitement, discovery and contemplation.



PARK CONCEPT

← full spectrum of play →



* Create safe play opportunities that feel "risky" in order to encourage child development. What makes play feel risky?

Height



Speed



"Dangerous"
Tools



Natural
Elements

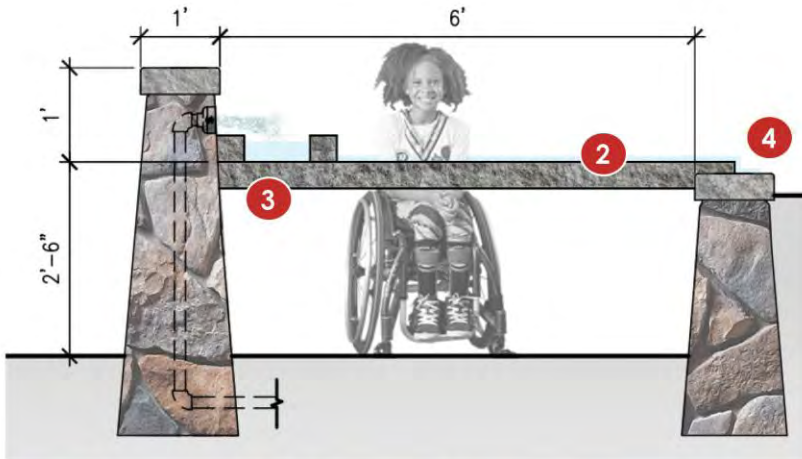


Rough &
Tumble



Independence

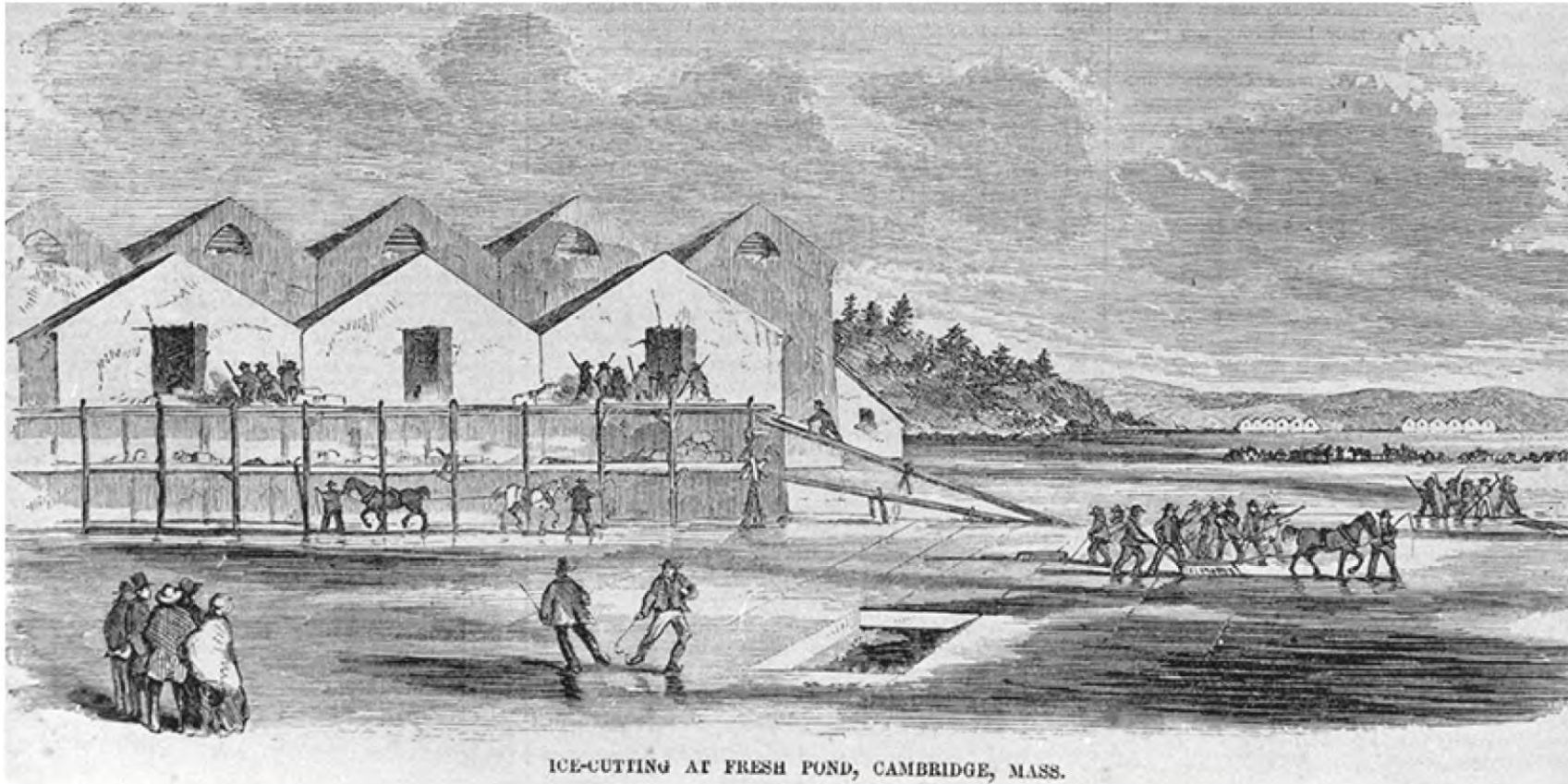




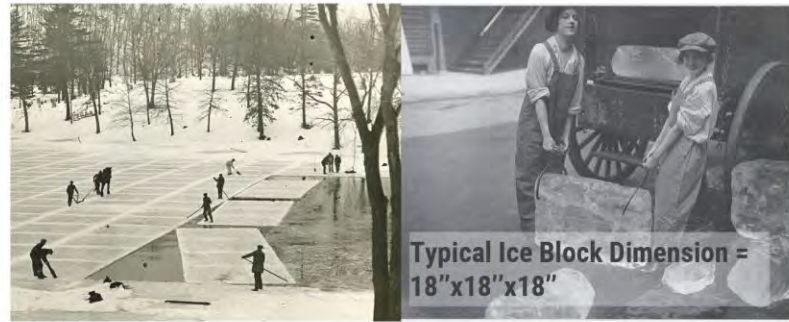
CHARACTER: INCLUSIVE



CHARACTER: MULTI-GENERATIONAL



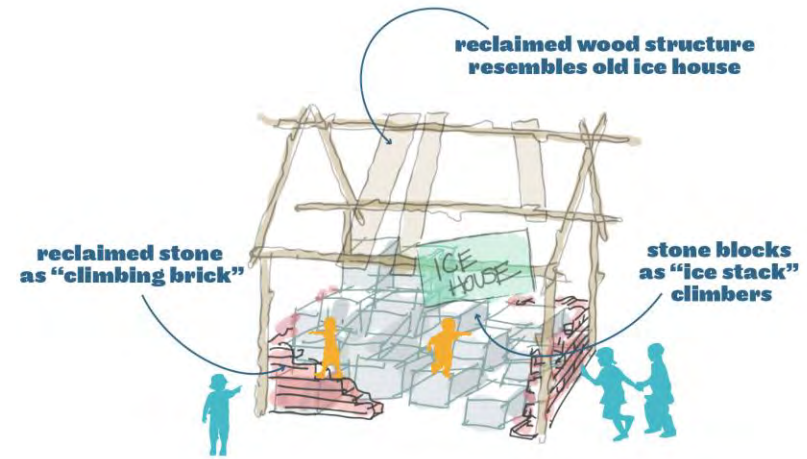
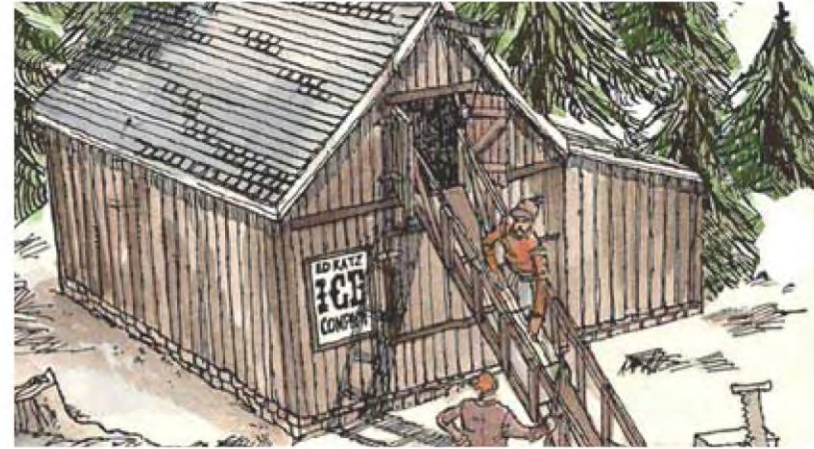
ICE-CUTTING AT FRESH POND, CAMBRIDGE, MASS.



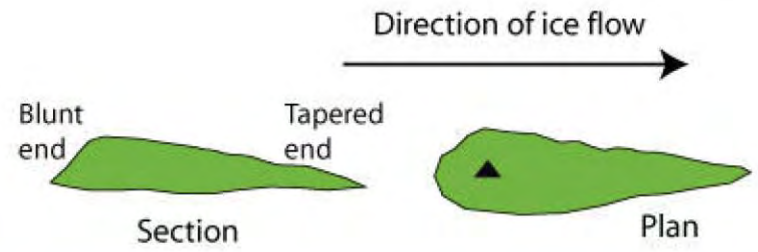
INSPIRATION: **FRESH POND'S ICE INDUSTRY**



AREA PLAY ELEMENTS: "ICE" BLOCKS



AREA PLAY ELEMENTS: ICE HOUSE



AREA PLAY ELEMENTS: 'DRUMLIN' + 'KETTLE POND'



AREA PLAY ELEMENTS: WATER PLAY GARDEN



Fountain Spray



Wall Spray



Magic Mist



Launch Pod No 1



Water Tunnel



Volcano



AREA PLAY ELEMENTS: SPRAY PARK



AREA PLAY ELEMENTS: **MIST ZONE**



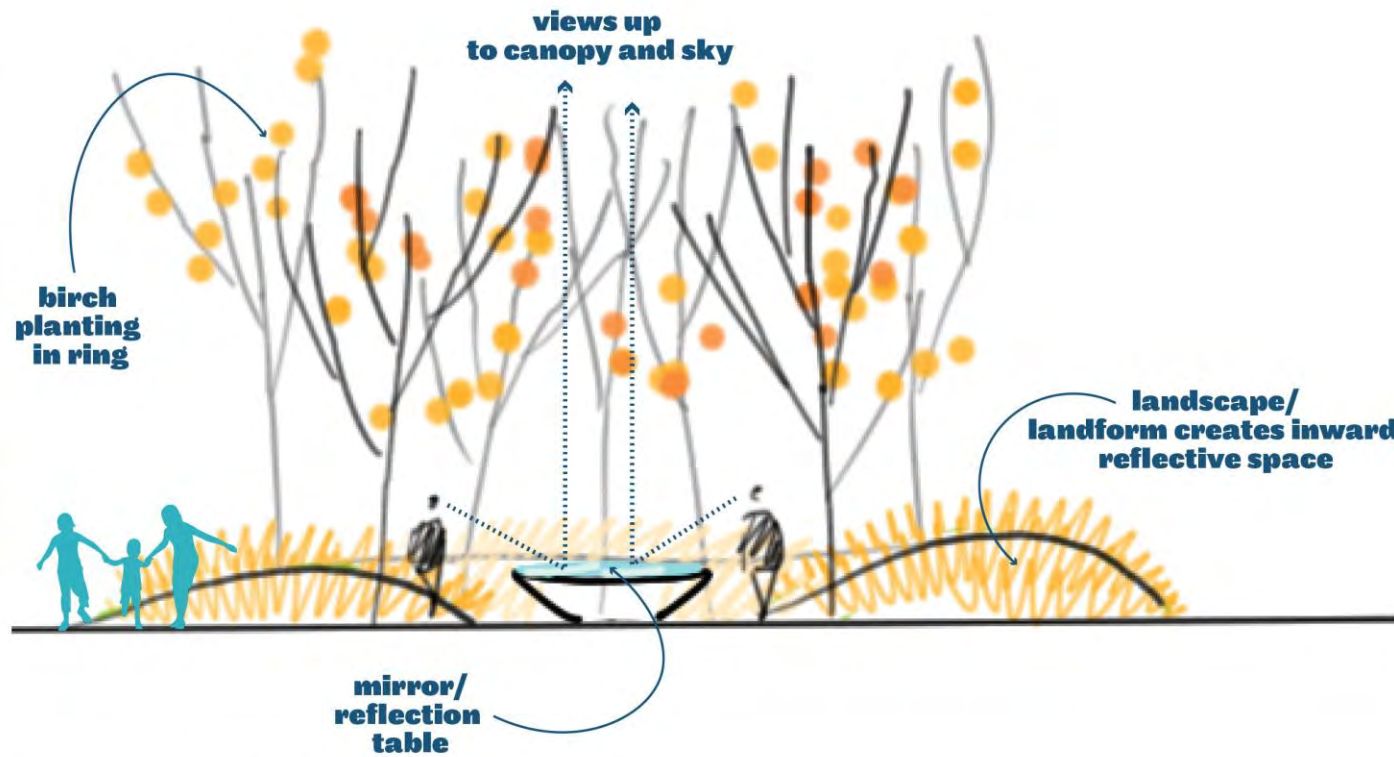
LINEAR PLAY ELEMENTS: **RUNNEL**



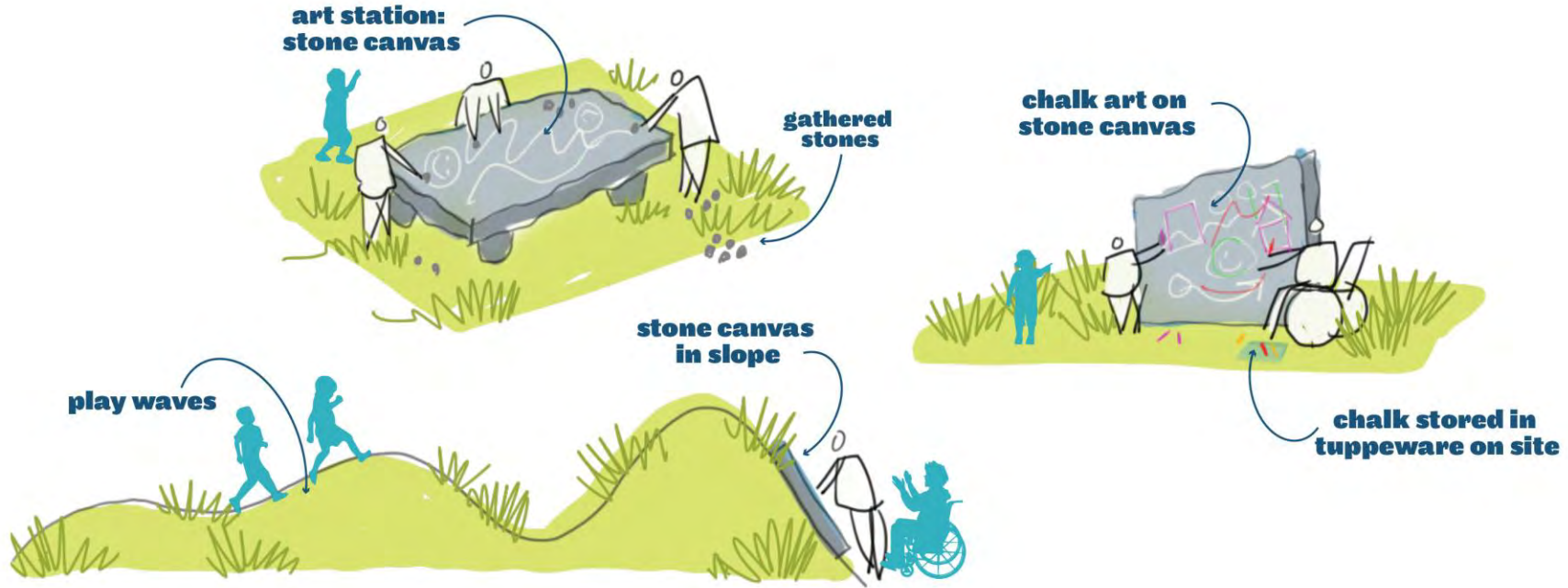
AREA PLAY ELEMENTS: CLIMBING 'FOREST'



POTENTIAL PLAY AREA: **TREE DECKS / ROPE BRIDGES**



POTENTIAL PLAY AREA: **SKY & CANOPY REFLECTION / MIRROR GARDEN**



POTENTIAL PLAY AREA: **SLATE CANVAS / ART ROOMS**



POTENTIAL PLAY AREA: **MUSIC GARDEN**

POTENTIAL LINEAR PLAY ELEMENT: **ROPE WALK**



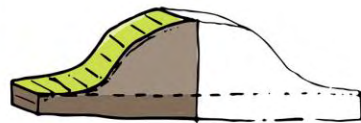
LINEAR PLAY ELEMENTS: HORIZONTAL LOGS



LINEAR PLAY ELEMENTS: NET CLIMBERS

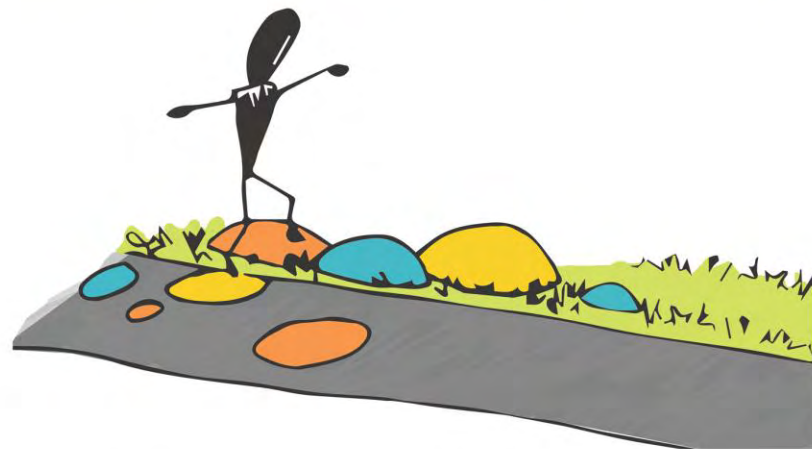


HORIZONTAL



VERTICAL

LINEAR PLAY ELEMENTS: WAVE CURB



LINEAR PLAY ELEMENTS: 2D-3D DOTS



CHARACTER: PLANTING



CHARACTER: UNIQUE ELEMENTS



AREA PLAY ELEMENTS: SWINGS + SLIDES



AREA PLAY ELEMENTS: PLAY SURFACES

Community Spaces



Improved Site Circulation



Collaborative Design Process



Next Steps

- Meeting content posted on project website
- Upcoming Community Meetings:
 - Meeting #3: Early 2020
 - Final Design & Construction Open House

For more information on this project or to be added to the project email list to receive future notices, please visit: www.cambridgema.gov/GlackenField

If you have any questions, please contact:

Kara Falise – *Project Manager* – kfalise@cambridgema.gov or 617-349-4827

Kate Riley – *Community Relations Manager* – kriley@cambridgema.gov or 617-349-4870

Questions and Comments



For more information on this project or to be added to the project email list to receive future notices, please visit: www.cambridgema.gov/GlackenField

If you have any questions, please contact:

Kara Falise – *Project Manager* – kfalise@cambridgema.gov or 617-349-4827

Kate Riley – *Community Relations Manager* – kriley@cambridgema.gov or 617-349-4870

Break-Out Activities

Small Group discussions to learn more about the design elements and share your thoughts.