

GORE STREET UTILITY PROJECT COMMUNITY PRESENTATION SEPTEMBER 28, 2017



City of Cambridge

Developer: DivcoWest

Development Manager : HYM Investment Group

Construction Mitigation: CSL Consulting

INTRODUCTIONS

City of Cambridge DPW – Kathy Watkins, Jim Wilcox, Kara Falise

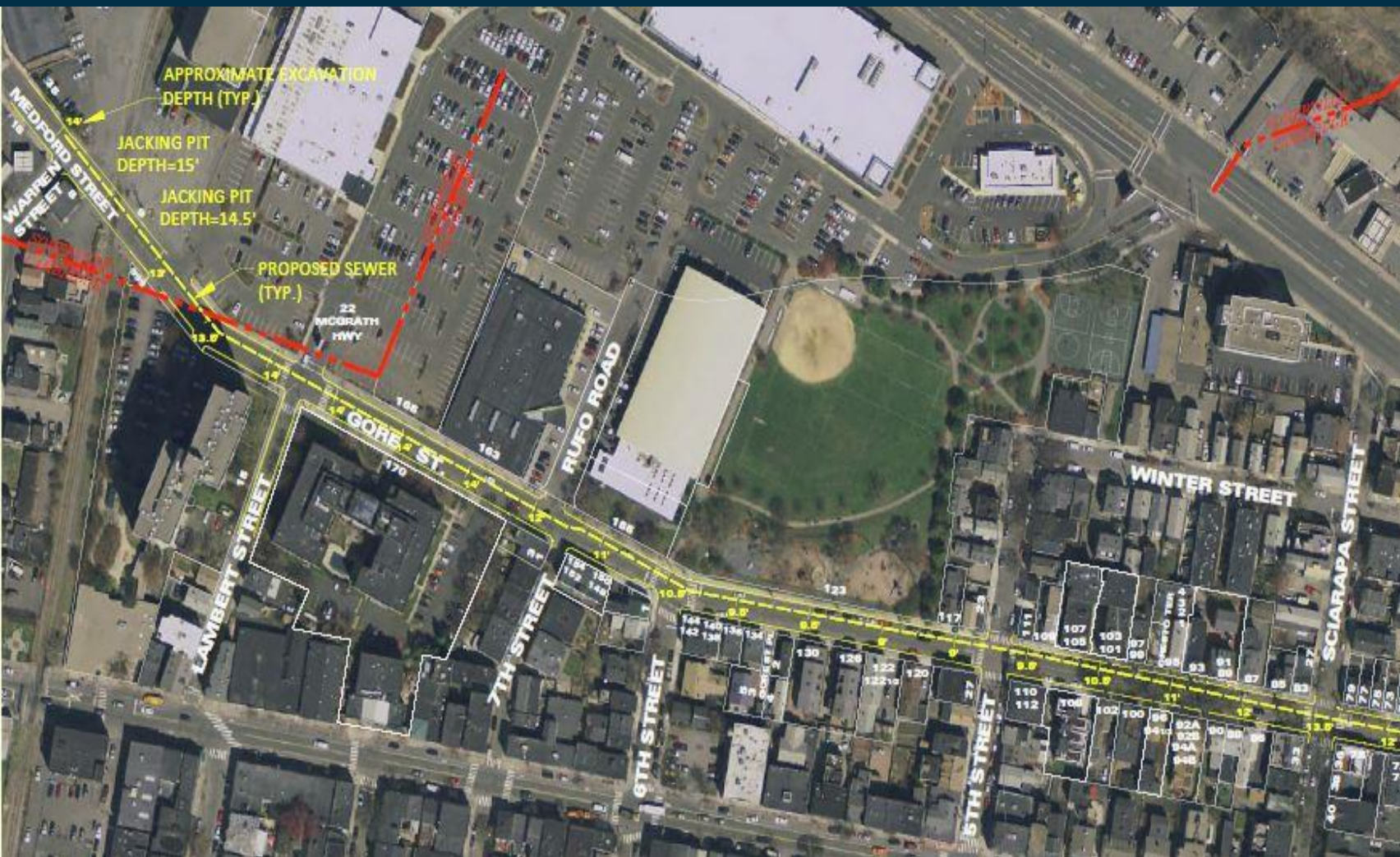
DivcoWest Real Estate Investment – Mark Johnson

HYM Investment Group – Mike Barowsky

Beals and Thomas - Richard Kosian

CSL Consulting – Ed LeFlore

GORE STREET SCOPE



New Sewer (Northpoint)

New water main (8" 1874, City)

City will work with private utilities to upgrade their systems

- Eversource Gas (6", over 100-years old)

Community process (City and Community) – determine scope of surface improvements

- New sidewalks and street trees
- New intersections and crosswalks

CONSTRUCTION



FIVE YEAR PLAN



CAMBRIDGE
DEPARTMENT
OF PUBLIC
**THE
WORKS**

City of Cambridge

Five Year **Sidewalk and Street** Reconstruction Plan

5.1.2017

Photo Credit: Christian Phillips Photography and Klopfer Martin Design Group

COMPLETE STREETS & VISION ZERO



INTRODUCTION | COMPLETE STREETS

Complete Streets are **streets for everyone**. They are designed and operated to enable **safe access for all users**. Pedestrians, bicyclists, motorists, and public transportation users of all ages and abilities are able to safely move along and across a Complete Street. Complete Streets make it easy to cross the street, walk to shops, and bicycle to work. They help buses to run on time and make it safe for people to walk to and from train stations.

More sidewalks and bicycle facilities are included, which provides **increased accessibility for pedestrians and cyclists**.

During design and construction of Complete Streets, our goal is to communicate projects with neighborhoods, facilitate an integrated design process, minimize disruption to community life, and provide reasonable access for all users during reconstruction.

INTRODUCTION | VISION ZERO

On March 21, 2016, the Cambridge City Council unanimously passed resolutions put forth by the City Manager to formally adopt Complete Streets and Vision Zero policies, showing that the City of Cambridge is committed to achieving these goals, assuring safe access for all users.

Vision Zero calls for the elimination of fatalities and serious injuries resulting from traffic crashes, and emphasizes that they can and should be prevented. The City of Cambridge is the 17th city in the U.S. to commit to a Vision Zero Policy.



PEDESTRIANS

Accessibility / Universal Design



CYCLISTS

Bicycle Network Vision



Cambridge Bicycle Plan www.cambridgema.gov/CDD/Transportation/bikesincambridge/bicyclenetworkplan

TREES

Trees



VEHICLE ACCESS

Emergency Vehicle and Loading



COMMUNITY PROCESS

Community meetings and open houses – focus on surface improvements

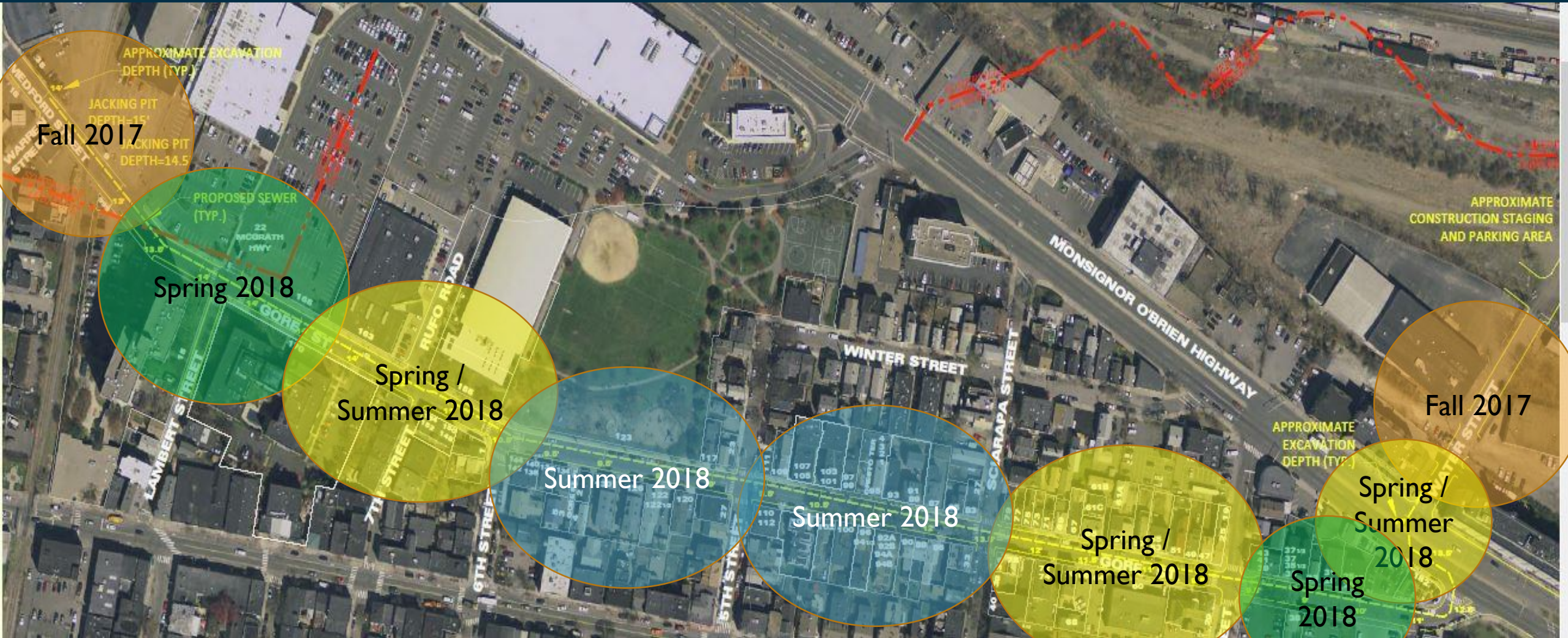
Begin process in Spring 2018

Would love to hear any thoughts / concerns tonight as we discuss the upcoming construction.

UTILITY LINE SCOPE



UTILITY LINE SCOPE



CONSTRUCTION SCHEDULE

Work Areas	Fall 2017	Winter 2017 / 2018	Spring 2018	Summer 2018
Water Street				
Warren Street RR Crossing				
Warren Street to 3rd Street				
MOB to 3rd Street				
MOB Crossing				

CONSTRUCTION LOGISTICS

- Two crews will be working on Gore Street to reduce construction duration
- The work area will be limited to one street at a time on opposite ends of Gore Street.
- The road will always be accessible for emergency vehicles.

CONSTRUCTION LOGISTICS EQUIPMENT

Trenching Techniques



Work Truck and Compressors



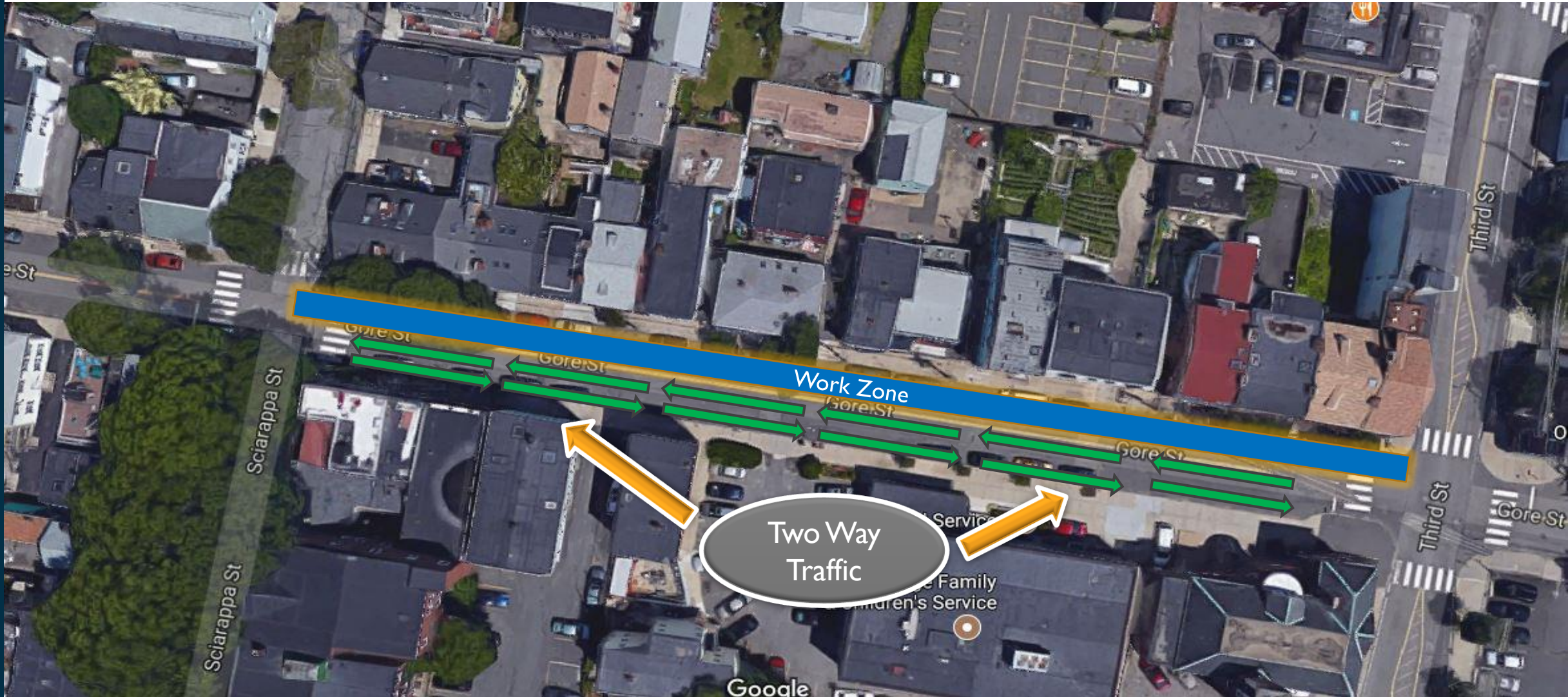
Excavators



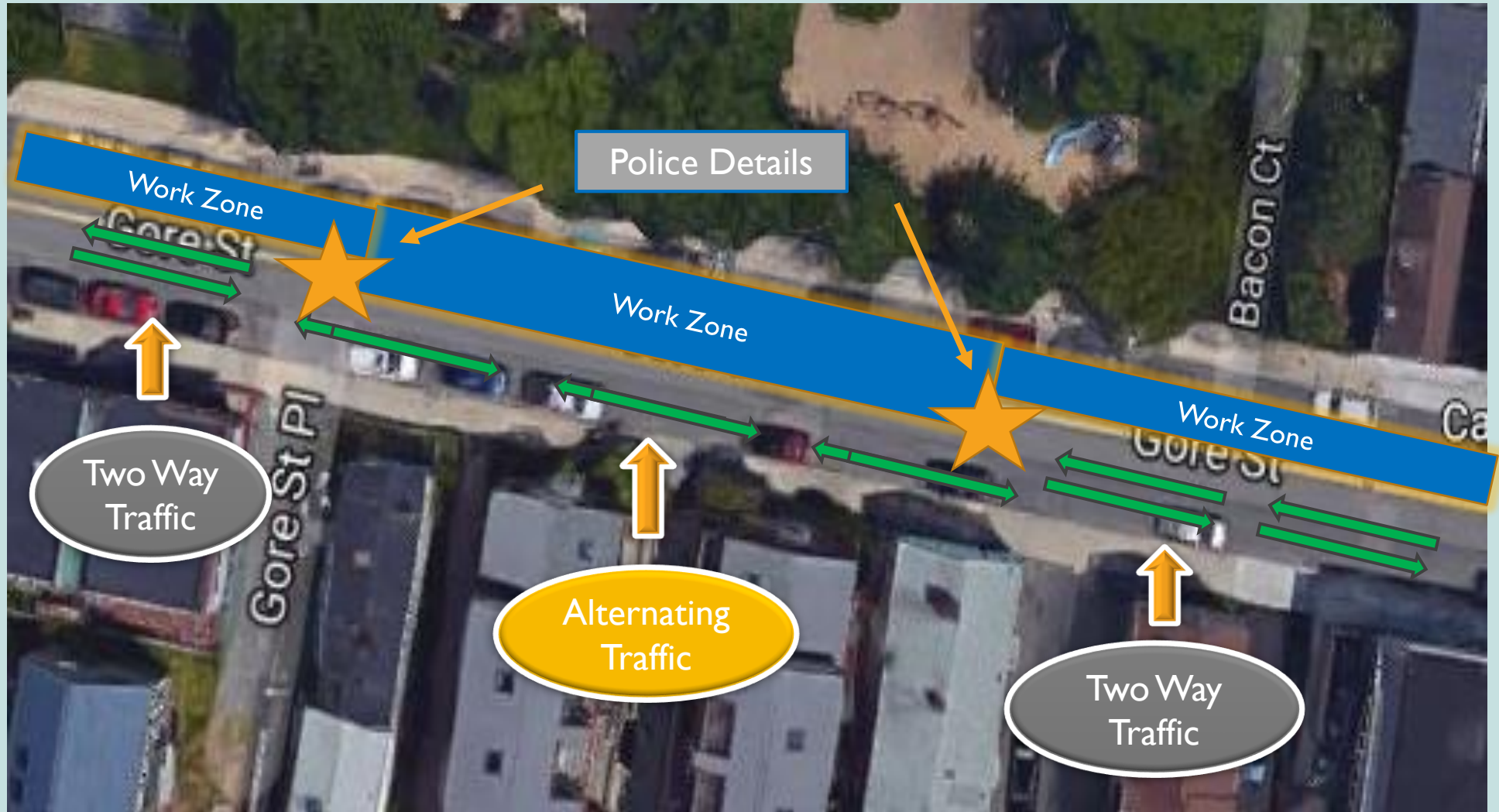
CONSTRUCTION LOGISTICS: 2ND TO 3RD STREET



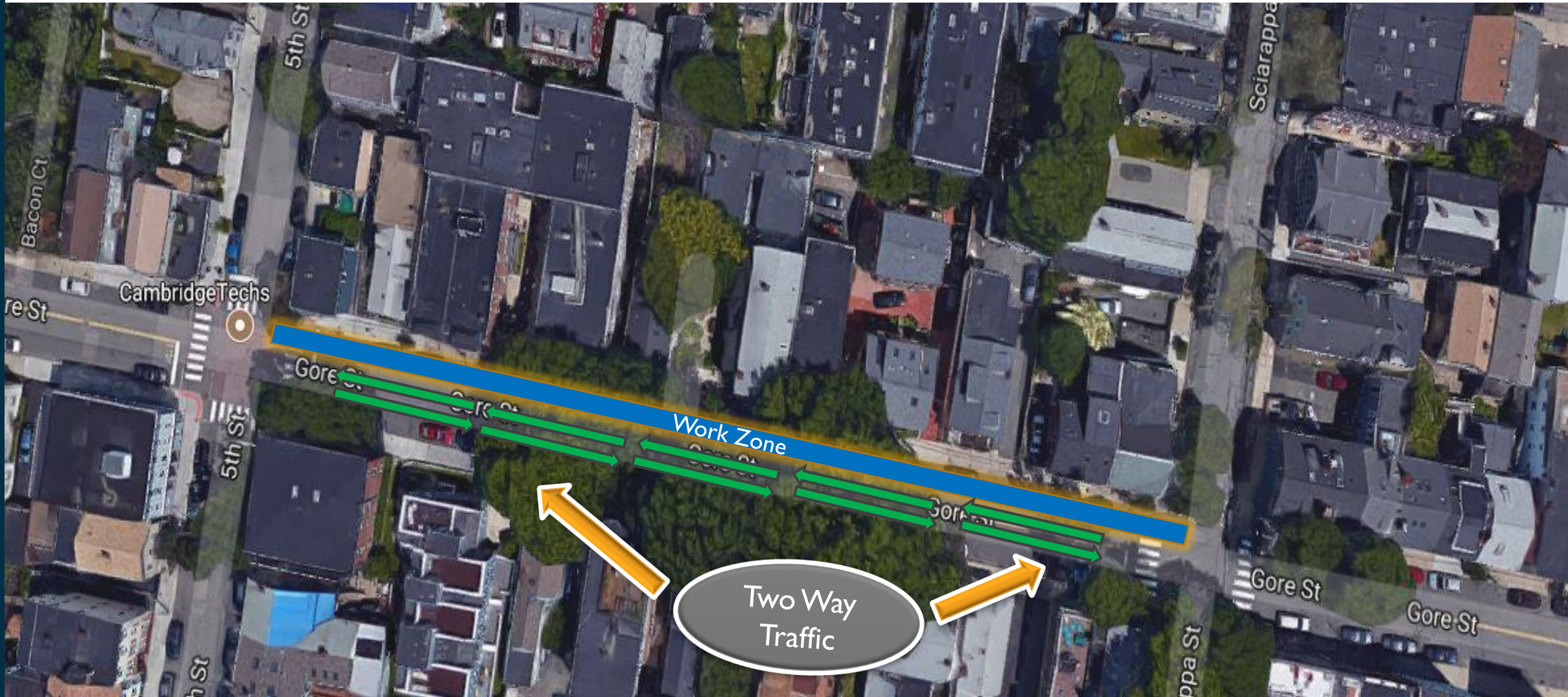
CONSTRUCTION LOGISTICS: 3RD TO SCIARAPPA ST



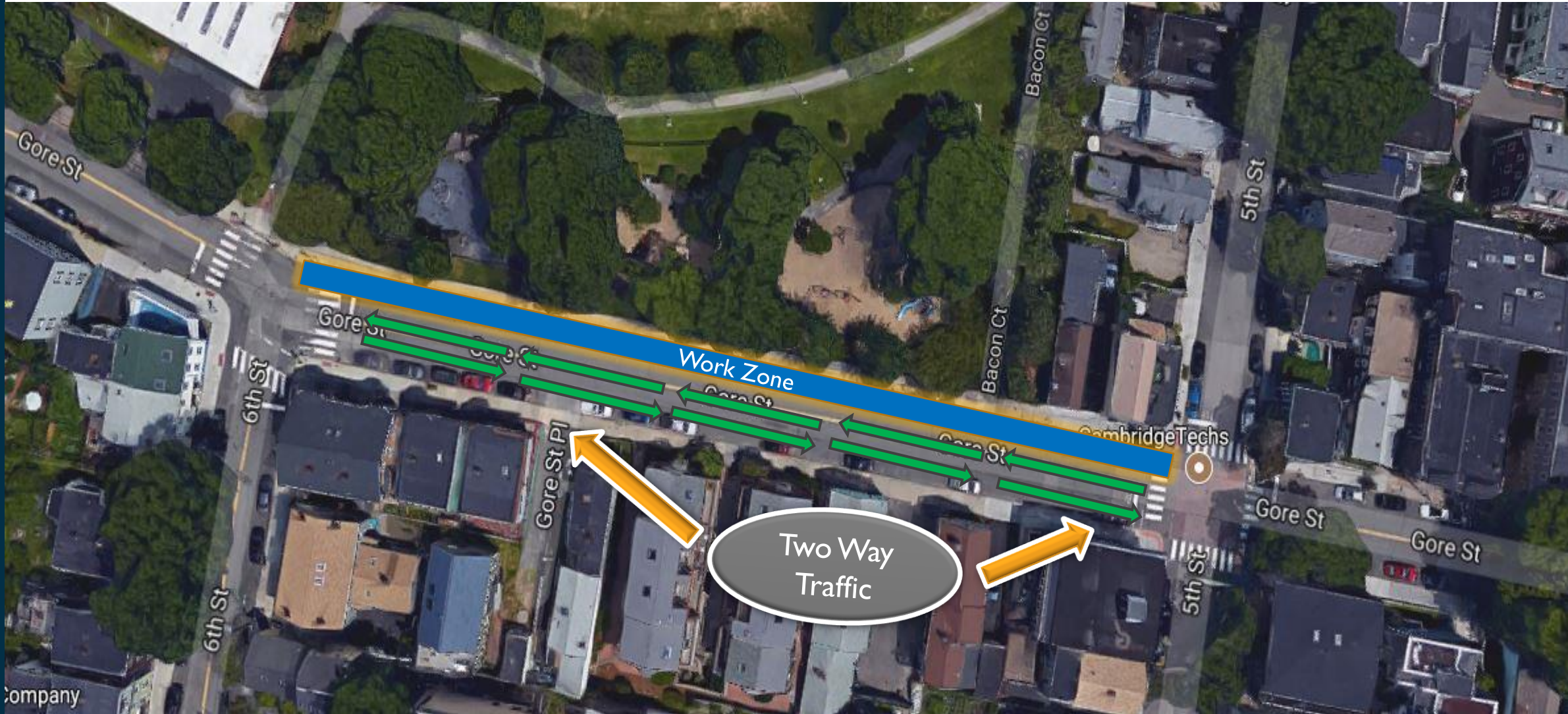
CONSTRUCTION LOGISTICS: ALTERNATING TRAFFIC



CONSTRUCTION LOGISTICS: SCIARAPPA ST TO 5TH



CONSTRUCTION LOGISTICS: 5TH TO 6TH STREET



CONSTRUCTION LOGISTICS: 6TH TO LAMBERT STREET



CONSTRUCTION LOGISTICS: LAMBERT TO WARREN ST



CONSTRUCTION WORK HOURS

- Monday - Friday 7:00 AM to 4:00 PM.
- Limited construction will occur on weekends.
- 72 hours advance notice and permits required for work outside of typical work days and hours.

TRAFFIC MANAGEMENT PLAN

- Emergency vehicles will always have access.
- One lane of traffic in each direction will always be maintained.
- Residents can park at a nearby location if they cannot find nearby parking.

RODENT CONTROL

- Pre-Construction investigation of the area
- Coordination with City Inspectional Service Department.
- Pre-bait if needed
- Keep work area free of trash and food waste
- Routine monitoring throughout the project

NOISE AND VIBRATION MONITORING

- Sound metering during construction - levels stay below allowed thresholds.
- Prior to and during-construction vibration monitoring
- Exterior building pre and post surveys.
- Pre and post construction monitoring point surveys
- Identify and document any sensitive structures
- Survey existing utilities
- Use vibration sensitive means and methods when possible

PARKING

- Passes to park at a nearby location for residents of the block under construction.
- The Project Team will update the parking plan on a bi-weekly basis.
- No contractors parking personal vehicles on or around Gore Street, even with a Cambridge sticker. Contractor parking will be provided at Northpoint.
- Construction or company vehicles can park and operate in Gore Street work zone only during work hours.
- Efforts will be made to maintain driveways during construction. If a driveway is required to be blocked, the impacted residences will be coordinated with and access will be restored at the end of the work day.

MITIGATION PROGRAM

- The goal of the Mitigation Program is to avoid, minimize, or eliminate negative impacts to neighborhoods, businesses, and the City from construction projects, without hindering the efficiencies of the construction activities.
- Major components of the mitigation program are:
 - Planning
 - Monitoring and reporting
 - Neighborhood communication
 - Problem solving
 - Enforcement of contractor work rules
- Divco has made contributions to the City for Gore Street improvements, subject to neighborhood approvals

MITIGATION PROGRAM

Access needs will be accommodated –

- Deliveries
- Home Repairs
- Drop off's / Pick Up's
- Accessible Parking Requirements
- Medical Emergencies

Other concerns can be accommodated –

- Rodent concerns
- Work before 7am
- Vibration concerns
- Noise concerns
- Dust concerns

COMMUNICATION PLAN

- Door flyer neighborhood at each phase of the project
- Use of a Project Information Board on site.
- Hold neighborhood meetings as needed.
- Update and distribute project schedule once per month

Mitigation Contact Information:

- Website: www.npconstruction.info
- Email Address: mitigation@csl-consulting.com
- Hotline Phone Number: **(617) 866-8971**