



City of Cambridge Department of Public Works

147 Hampshire Street
Cambridge, MA 02139
theworks@cambridgema.gov

Owen O'Riordan, Commissioner

Voice: 617 349 4800
TDD: 617 499 9924

April 20, 2018

To: Louis DePasquale
City Manager

From: David Lefcourt
City Arborist

Through: Owen O'Riordan
DPW Commissioner

Re: Tree Hearing Recommendation

The following trees were heard on April 10, 2018. Objections to the removals are attached.

1. Hampshire St at Cambridge St (Vellucci Plaza) – Removal of 4 honeylocust (14.2”, 16”, 14.7”, and 13.3”) for pedestrian, bicycle, and traffic safety improvements. Location will be replanted.
2. 237 Hampshire Street – Removal of 1 oak (3.5”) for pedestrian, bicycle and traffic safety improvements. Location will be replanted.

DESCRIPTION:

The initiation of the Public Tree Hearing for the 5 street trees on Hampshire Street in Inman Square was by the City Arborist. The City is proposing to reconstruct Inman Square to address long-standing safety and operational issues. The design requires the removal of the 4 trees in Vellucci Plaza due to the re-alignment of the intersection. The tree at 237 Hampshire Street is proposed for removal due to its deteriorated condition.

PROJECT BACKGROUND:

The purpose of the Project is to design and construct permanent physical improvements to Inman Square which will address long-standing safety and operational issues.

Project Background

Project Goals



Primary Goal: Improve safety for all users in line with City's commitment to Vision Zero.

Opportunity to also improve plaza, support local businesses, maintain truck & Fire Dept. access.



Existing Operational and Safety Issues

The extremely oblique intersection of two major arterial streets at Inman Square contributes to operational and safety issues. Conflicts between modes are of particular concern, given that Inman Square is the location of some of the highest bicycle volumes in the City (approximately 600 bicycles traverse the Square during a typical weekday peak hour). In addition, over 1,000 pedestrians cross the Square's streets during the peak hours.

The unusually large size of the intersection results in long signal cycle lengths, and lengthy delays for all modes. Crosswalks are extremely long, which increases the exposure of pedestrians and cyclists to vehicle conflicts. The large number of potential turning movements resulting from the Square's seven entry/exit points, as well as parking maneuvers, also present many opportunities for conflicts between users.

Inman Square has been identified as one of the top 200 high crash locations in Massachusetts, with a crash rate roughly double the statewide average for a signalized intersection. In addition, a high proportion of crashes in the Square involve pedestrians and cyclists, increasing the incidence of personal injury. Analysis of the types of crashes in Inman Square indicate that the physical configuration of the intersection is a significant contributing factor to the incidents which occur there.

Proposed Design and Impact on Vellucci Plaza

The design splits the single, unusually large, Inman Square intersection into two smaller signalized intersections with more conventional geometry. The design reduces the size of the current Vellucci Plaza and requires removal of the 4 honeylocusts, but allows for the creation of a new Vellucci Plaza, on the opposite side of Hampshire Street, adjacent to existing retail uses. The open space will provide a tree-shaded flexible space that could accommodate seating, informal outdoor dining, and special events, and have a lively feel.

Project Background

Existing Conditions



1. High crash location. 2008 – 2012, 69 total crashes in 5 years (exceeds MassDOT avg Statewide crash rate). 15 bicycle involved; 5 pedestrian involved.
2. Crosswalks outside of desire lines and some not signal controlled
3. Long distance for pedestrians and bikes to travel
4. No signal control for Hampshire Street Southbound turn to Antrim Street
5. Issues with clearance time for all users

Project Background

Concept Design – Developed over last 1½ years



The plaza design shown is a placeholder for scale only. See plaza concepts.

The proposed design will:

- Improve safety, operations, and comfort for all users
- Provide protected bike lanes through the intersection
- Provide more direct and shorter pedestrian crosswalks
- Accommodate access to the fire station, including adequate signal clearance
- Create usable open space and placemaking opportunities
- Include significant tree plantings

Tree Plantings

The project will replant Vellucci Plaza, provide additional street trees and add trees to the Springfield Street parking lot. The new trees will be planted in sand based structural soil and will be watered by contract or irrigation for a minimum of 3 years. In 10 years, the anticipated tree canopy in the project area is anticipated to be 100% to 135% of current tree canopy.

At the hearing, residents requested that additional tree plantings be included in the neighborhood to further offset the impacts on tree canopy. As part of the project, the City will commit to an additional \$50,000 for additional trees in the neighborhood, beyond the project limits. Locations will be coordinated with the City Arborist.

Tree Canopy

Tree Preservation/Restoration Treatments

- Tree protection and pruning
- Expanded tree pits
- Air Spading of roots
- Structural soil
- Water
- Compost/Nutrient Treatment



RECOMMENDATION:

While I am concerned with and take issue with the removal of healthy trees, after reviewing the project background provided by the Engineering Division; the safety improvements; the recommendations of the City Engineer and the Commissioner of Public Works; and the proposed mitigation for the tree removals, including the additional tree plantings; it is my recommendation that the 5 street trees on Hampshire Street be removed in order for the project to proceed.

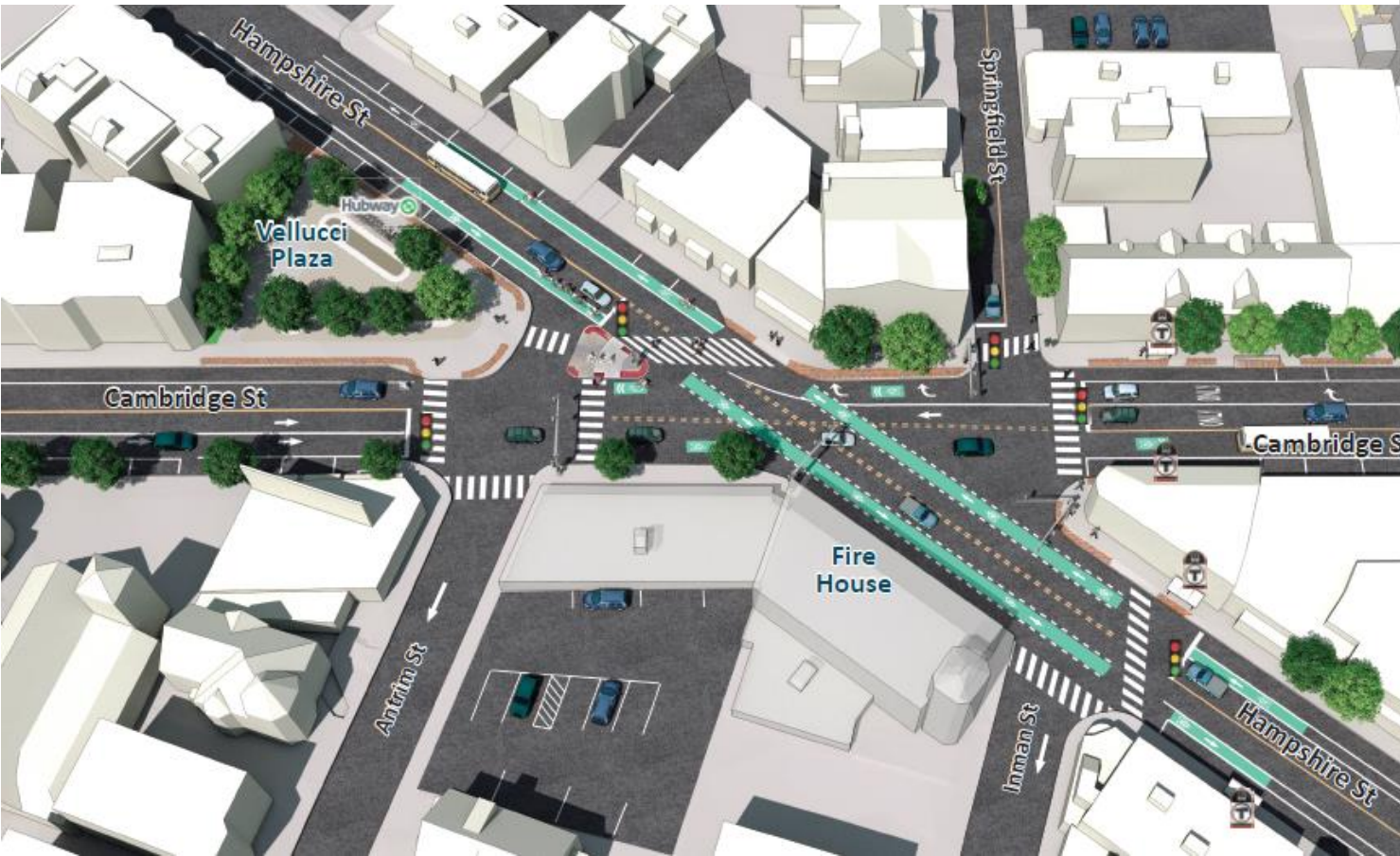
INMAN SQUARE INTERSECTION IMPROVEMENTS PROJECT



Public Tree Hearing | April 10, 2018



Existing Conditions



1. High crash location. 2008 – 2012, 69 total crashes in 5 years (exceeds MassDOT avg Statewide crash rate). 15 bicycle involved; 5 pedestrian involved.
2. Crosswalks outside of desire lines and some not signal controlled
3. Long distance for pedestrians and bikes to travel
4. No signal control for Hampshire Street Southbound turn to Antrim Street
5. Issues with clearance time for all users

Project Goals

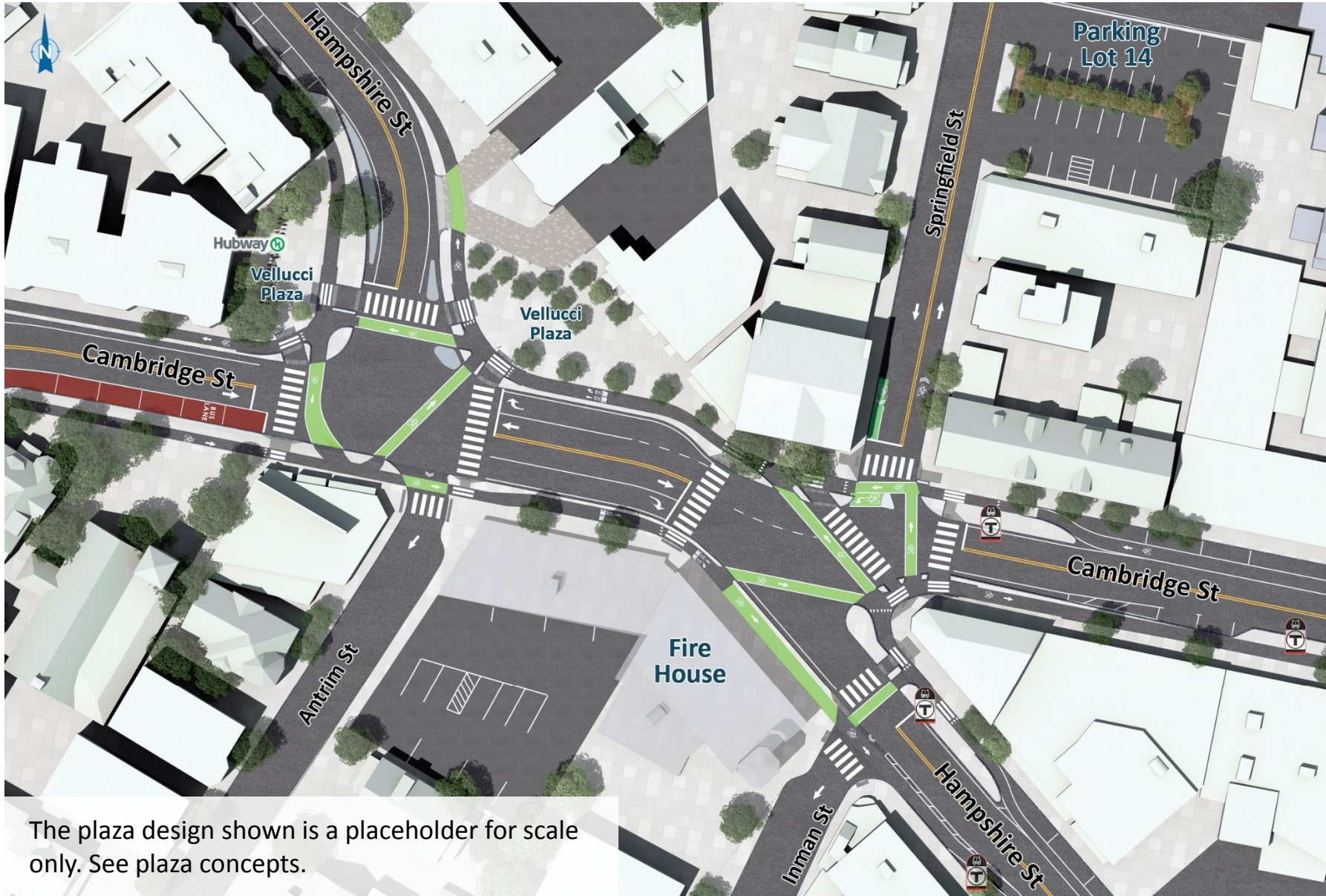


Primary Goal: Improve safety for all users in line with City's commitment to Vision Zero.

Opportunity to also improve plaza, support local businesses, maintain truck & Fire Dept. access.



Concept Design – Developed over last 1½ years



The plaza design shown is a placeholder for scale only. See plaza concepts.



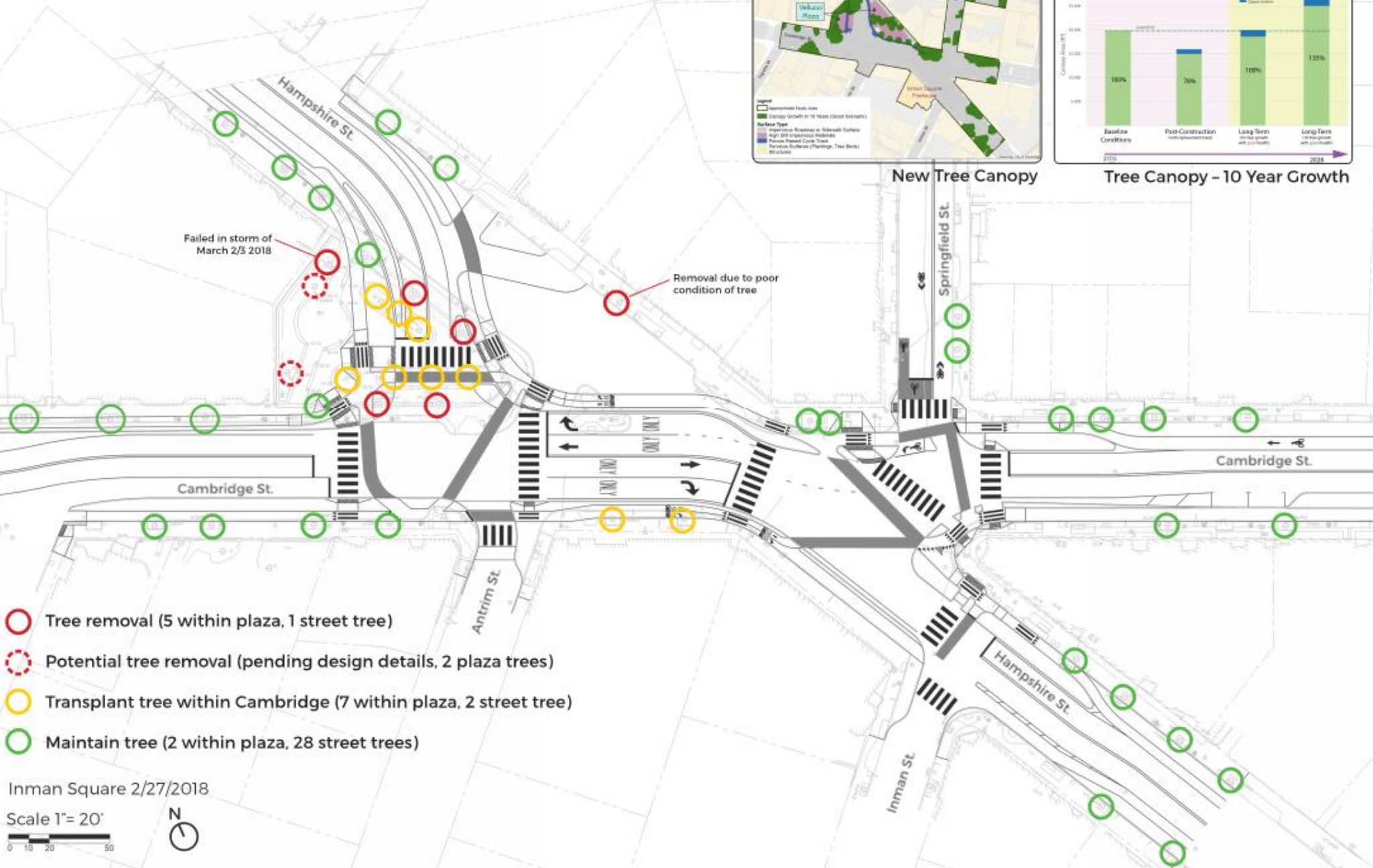
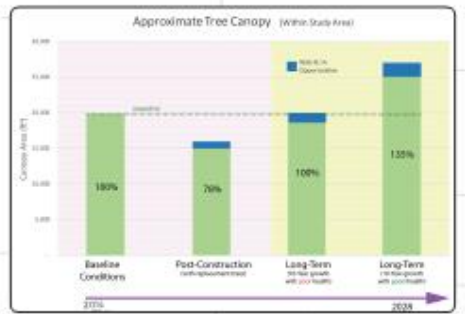
Tree Canopy

Existing Conditions



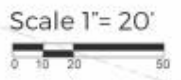
Source: Google Earth

Impacts on Existing Trees - Does not include new tree plantings



- Tree removal (5 within plaza, 1 street tree)
- Potential tree removal (pending design details, 2 plaza trees)
- Transplant tree within Cambridge (7 within plaza, 2 street tree)
- Maintain tree (2 within plaza, 28 street trees)

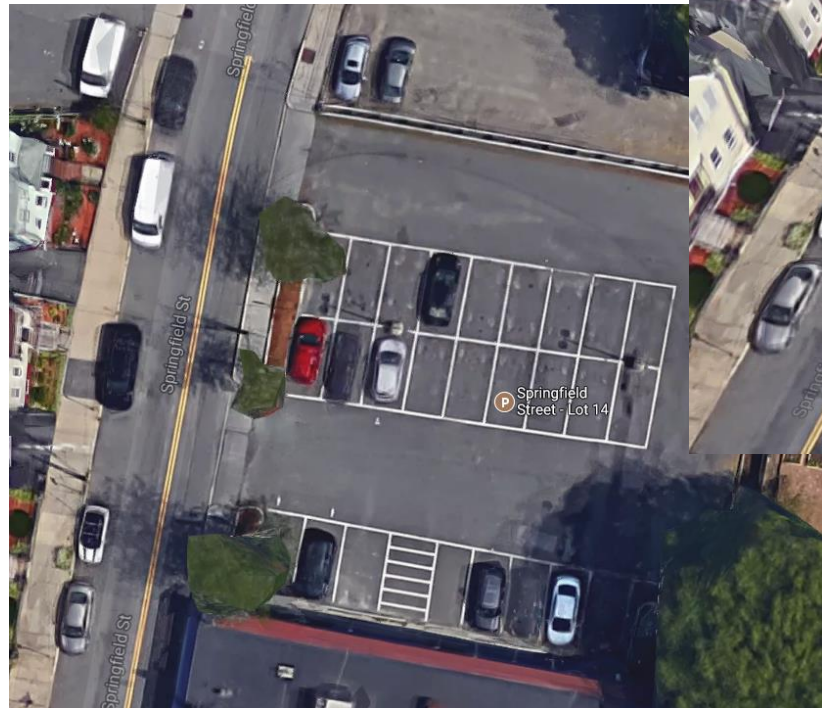
Inman Square 2/27/2018





Tree Canopy

Springfield Street Parking Lot Improvements



Tree Canopy

Tree Preservation/Restoration Treatments

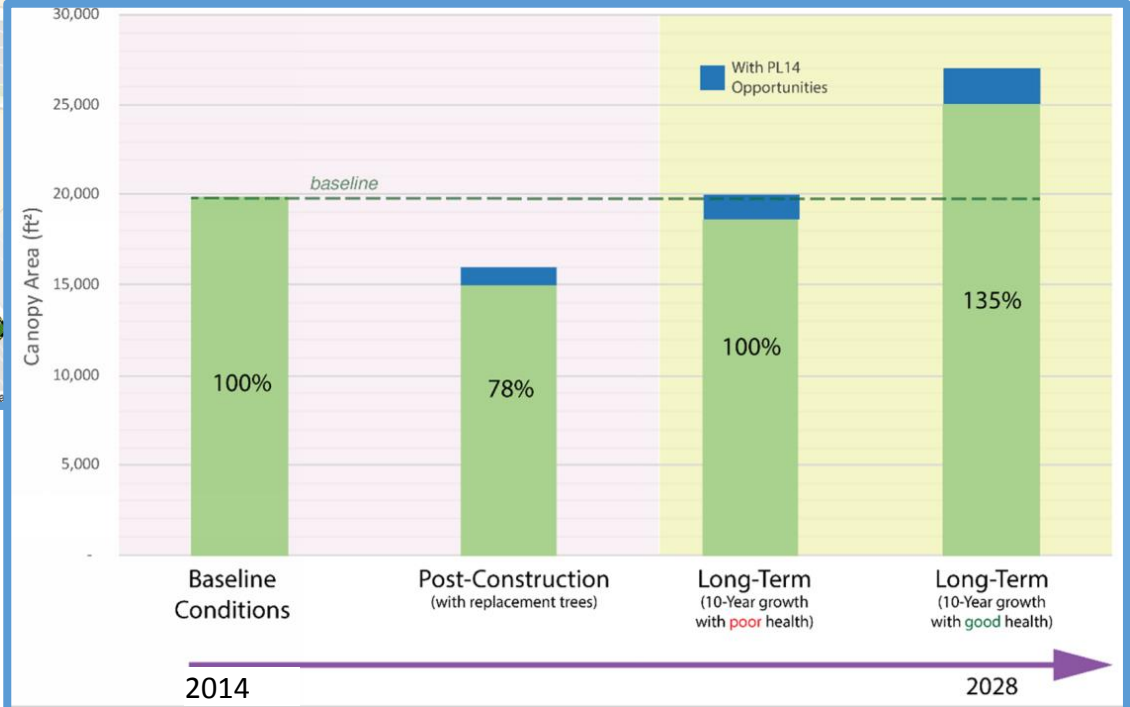
- Tree protection and pruning
- Expanded tree pits
- Air Spading of roots
- Structural soil
- Water
- Compost/Nutrient Treatment



Tree Canopy

Current Concept: 10 year Growth

Estimated 100% to 135% restored @10 Year Growth



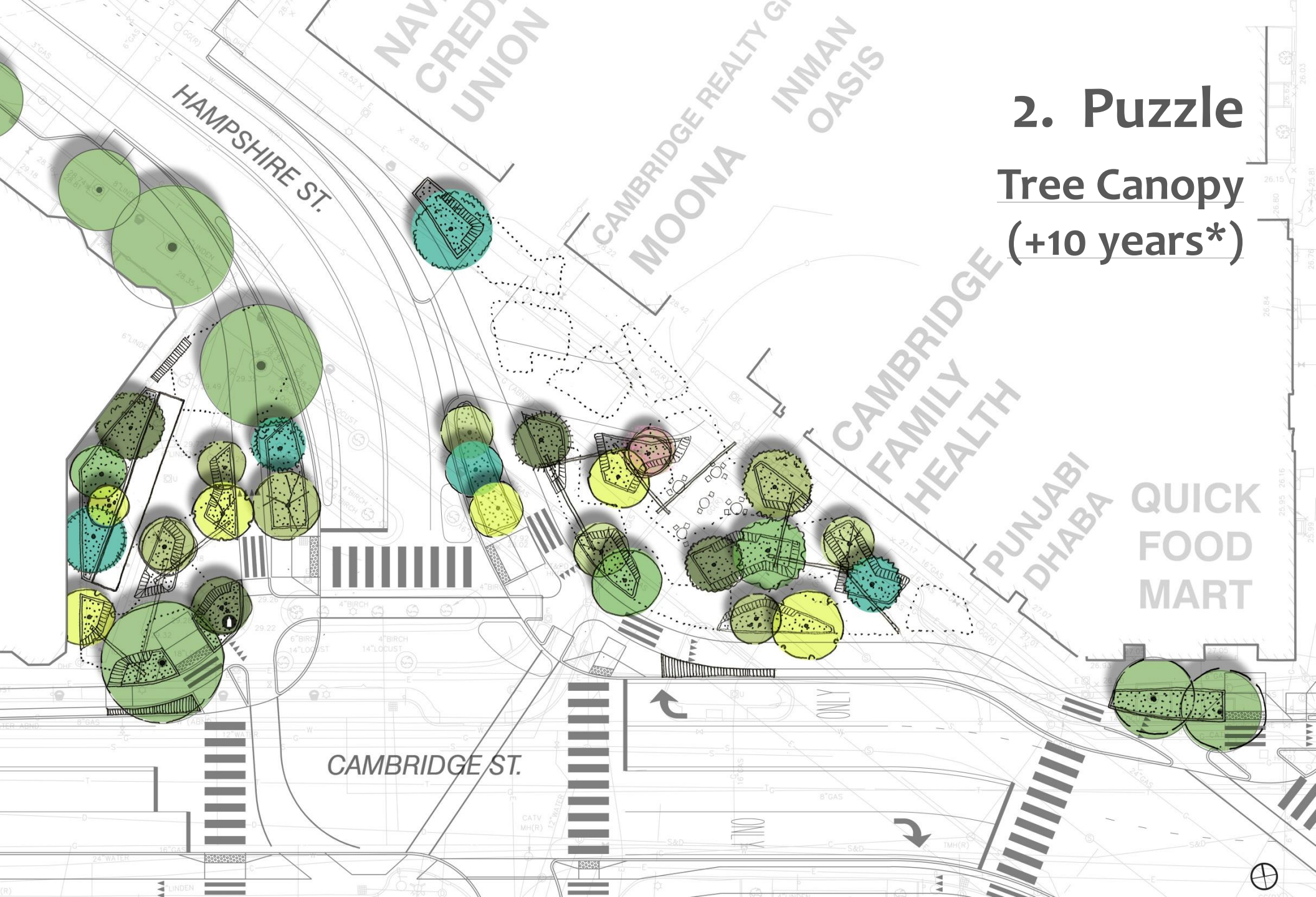
Environmental Benefits

- Reduce vehicle emissions by reducing vehicle delay.
- Significant safety improvements – encouraging more people to bike and walk, further reducing transportation emissions.
- Improve transit operations, further reducing transportation emissions.
- Improve Springfield St Parking Lot – reducing asphalt and piloting cool asphalt coating.
- Use lighter colored pavers in plaza areas.

1. Wedge Tree Canopy (+10 years*)



2. Puzzle Tree Canopy (+10 years*)



3. Eddy Tree Canopy (+10 years*)



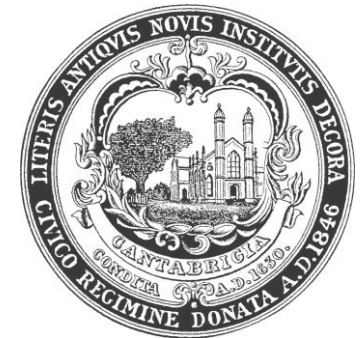
NEXT STEPS AND FEEDBACK SESSION

Next Steps

QUESTIONS

CONTACT INFORMATION:

Community.cambridge@kleinfelder.com
www.cambridgema.gov/theworks/inmansquare



Lefcourt, David

From: Ryan Frazer <ryan.frazer@gmail.com>
Sent: Tuesday, April 03, 2018 12:26 PM
To: Cambridge Trees
Subject: In support of tree removal @ Vellucci Plaza/Inman Square

To the City Arborist:

I am writing in support of the proposal to remove five total trees from the Vellucci Plaza/Inman Square area to facilitate the rebuilding and improvement of Inman Square for vehicles, pedestrians and bicyclists. I appreciate the thought and care that has gone into choosing a plan that will make Inman safer for all of its users, and that while it is unfortunate to lose trees that are several decades old, new trees will be planted and permitted to flourish in a space that will also hopefully get more use than the current Vellucci Plaza.

Thank you for your consideration.

Ryan Frazer
24 Copley St.
Cambridge, MA 02138

Lefcourt, David

From: Richard Krushnic <rkrushnic@gmail.com>
Sent: Friday, April 06, 2018 4:57 PM
To: Lefcourt, David
Subject: Inman Square Reconfiguration and tree canopy

Six Inman Square residents sent a letter to the City Manager and City Councilors (published as a column in the Chronicle) urging your support for the Inman intersection reconfiguration design put forward by city staff. I hope you help this design move forward. I am including some of that letter below. First, however, I want to elaborate on a condition we want the City Manager and Council to place on moving forward: a requirement for an increased tree canopy in the area, which addresses the issue of the City's declining tree canopy. Just because the design requires the taking of 4 mature trees, that doesn't prevent the decision from INCREASING the canopy:

Required: 3%--5% increase in the tree canopy by 10 years from now: We request that the City Council and City Manager enact a binding commitment growing and maintaining a tree canopy within a 1/3 mile radius of Inman Square that is 3%--5% larger 10 years from now than it is today. The design being implemented includes tree takings, relocations and additions that, along with asphalt reductions will lead to an intersection heat island 10 years from now equivalent to today's. We can do a lot better than that. Why not use this reconfiguration as an opportunity to begin to reverse the trend of a declining city tree canopy.

This is part of our letter to city officials: We are writing in support of the Inman Square Intersection Improvement Plan. The plan was developed over the last year and a half with the primary goal of improving safety for pedestrians, cyclists and motorists, with a secondary goal of benefiting residents and local businesses with improvements to Vellucci Plaza.

Regarding everyone's first concern for safety, we can only trust that, when the city says safety is its main priority in the intersection redesign, that that is in fact true. Joe Barr, Director of Traffic and Parking for Cambridge, has stated that the design being implemented is the best safety solution and that the efficiency of the huge intersection will be improved by turning it into two intersections.

Regarding Vellucci Plaza, we feel the plan directly addresses the fact that the current Vellucci Plaza has been extremely underutilized as a social gathering space. Moving part of it to the other side of the street, contiguous to existing businesses where there is more foot traffic, will create a more successful social gathering space.

On March 7th of this year the city held its fifth community meeting since January 2017. The meeting focused on presenting three concepts for the reconfigured Vellucci Plaza, **which, as has been previously determined, will be** relocated to across the street in front of Punjabi Dhaba, leaving a smaller plaza in the original location.

Reasons we support the plan:

Local Business Benefits: The flow of pedestrian traffic in the design encourages people to *patronize local businesses*—especially take-out, fast food, coffee, and ice cream—by giving them a place to go to enjoy their food without having to cross a crosswalk (or, in the case of some restaurants, two or more crosswalks.) It is also beneficial to the businesses of Inman Square that traffic is allowed to make a left turn from Hampshire/Beacon Street onto Cambridge Street.

It is important to note that the reconfiguration does not reduce open space. The two resulting plazas have the same area as the current single plaza, 6,480 square feet.

We also would like to enlist your support for improving the city's design by ensuring that both the remnant of the original Vellucci Plaza and the new plaza as attractive as possible:

No Hubway in Vellucci Plaza Remnant: We suggest that the Hubway be located on the street, not in the remaining original Vellucci Plaza. Placing it for best use means that the sidewalk should be extended to accommodate it, or some other measure to ensure its usability in the winter. It must not be located in the remnant of Vellucci Plaza, if the plaza is to be an attractive place. For maximum benefit to the neighborhood and the business district, the remainder plaza must not only be attractive, but joined with the new plaza on the other side of Hampshire Street by a singular urban design.

Singular Urban Design uniting plazas on both sides of the street, framed by two water features: The best way to create a real Inman Square public center is to have a singular design uniting the two plazas on opposite sides of the street, and the best way to give attractive distinction to this center is to have the unitary design framed by 2 water features, one at either end. The one in the remnant plaza would appear as a brook emerging from the rear property line and tumbling into a tiny pond. The one in the new plaza would be a simply round fountain with an 18" high edge that one could sit on, and that toddlers could stand beside. This would have tables and chairs and green screening around it. Such a public space adjacent to retail and not across the street, will be uplifting for the business district. None of the three design options by the city's landscape consultant for the project followed this singular urban design concept.

Thanks for your consideration.

Lefcourt, David

From: Susan Markowitz <susanlmarkowitz@gmail.com>
Sent: Friday, April 06, 2018 5:14 PM
To: Lefcourt, David
Cc: Susan Markowitz
Subject: Inman Square Intersection

I am writing in support of the city's Inman Square intersection plan. As an Inman Square resident, my first concern is safety and according to Joe Barr, Director of Traffic and Parking, this is the safest plan for all. I'm also concerned about the tree loss but feel that the city's effort to plant new trees, use less asphalt, and reflective pavers will maintain a tree canopy at an equivalent level after ten years. As an environmentalist, this satisfies me. The combination of these two factors plus the fact that a new plaza on the other side of Hampshire Street will be a tremendous boost for social gathering and access to local businesses, make it even more desirable.

Thank you for your consideration.

Susan Markowitz
20 Oak Street

Lefcourt, David

From: Shelley Rieman <shelleyrieman@gmail.com>
Sent: Friday, April 06, 2018 6:16 PM
To: Lefcourt, David; City Council; City Manager
Subject: Inman Sq. intersection plan

I support the city's Inman Square intersection plan. I have lived in Cambridge many years and know how difficult and sometimes dangerous it is to travel through this square. I know the city has had many public meetings since January 2017 and has explained that this is the safest design. I'm also excited because the new plaza along Hampshire Street next to the businesses will be a good place for people to socialize and support businesses. The old Vellucci Plaza was never used because we had to cross the intersection.

Some people are upset that trees will be removed from the old Vellucci Plaza. But, the city has stated that it would plant more trees, use less asphalt and use reflective pavers to make the heat island equivalent to what it is today, in 10 years from now. If more trees were planted, it would be reduced even further.

Please help the push the Inman Square intersection plan forward.

Thank you.

Shelley Rieman
201 Franklin St.
Cambridge MA 02139

Lefcourt, David

From: Comcast <amyrugel@comcast.net>
Sent: Saturday, April 07, 2018 6:03 PM
To: Lefcourt, David
Cc: City Council
Subject: Fwd: Support the Inman Square intersection plan

Sent from my iPad

Begin forwarded message:

From: Comcast <amyrugel@comcast.net>
Date: April 7, 2018 at 5:37:31 PM EDT
To: dlefcourt@cambridgema.gov
Cc: citycouncil@cambridgema.govmanager.
Subject: **Support the Inman Square intersection plan**

I am a Cambridge resident writing to support the city's Inman Square intersection Plan. I frequently drive and walk through Inman Square and feel it is very dangerous. The new plan will make this intersection safer. Also, it will create an inviting space where people who want to shop in Inman Square can gather, relax, enjoy ice cream, sandwiches, etc. I have never seen people enjoying this space.

I know some people object to losing trees in Vellucci Plaza, but I think that if the city promises to plant new ones, and that the tree canopy will be equivalent - or even bigger- in ten years, this will be satisfactory.

Thank you for your consideration.

Sincerely,
Amy Rugel

Sent from my iPadtymanage

Lefcourt, David

From: Nancy Woods <nancywoods68@gmail.com>
Sent: Saturday, April 07, 2018 6:47 PM
To: City Council; Lefcourt, David
Subject: Inman Square improvements

I lived on Inman Street in 1969 and saw the first stoplight installed and we ate at a little known restaurant, Legal Seafood. Now, things are vastly different.

I live in Cambridgeport now, but bike and walk through Inman Square frequently. Thank you, City of Cambridge, for spending a year and a half sorting out the issues and arriving at a plan that increases safety, pedestrian pleasure, tree cover and more.

I support the reconfiguration.

Nancy Woods

--

Nancy Wells Woods
4 Hastings Square
Cambridge MA 02139
Land line: 617-661-7533
Cell: 617-583-2316

Lefcourt, David

From: Kathy Roberts <kathyroberts4@comcast.net>
Sent: Sunday, April 08, 2018 9:25 AM
To: City Council
Cc: City Manager; Clerk; Lefcourt, David
Subject: Inman Sq traffic

Dear Mayor, Vice-Mayor and Cambridge City councilors,
I am writing to support the city plans to re-figure the traffic in Inman Sq and the planting of more trees which are woefully missing on our city streets. At this time as I travel from west to east Cambridge the tension to get through without being in an accident is not normal. It is good that more people who are able to bike –do bike—but the rules for safe biking must be better enforced. Why is it that since the bike lanes have appeared on Cambridge Street are more bikers cutting in front of cars. A noticeable increase of bad biking behavior is happening. Hopefully this will change with these new traffic plans.

Kathy Roberts
321 Huron
02138

Lefcourt, David

From: O'Riordan, Owen
Sent: Sunday, April 08, 2018 12:29 PM
To: Lefcourt, David
Subject: Fwd: Public Hearing to Remove Trees from Vellucci Plaza

FYI

Sent from my iPhone

Begin forwarded message:

From: DEBRA MANDEL <debmandel@comcast.net>
Date: April 8, 2018 at 11:06:14 AM EDT
To: ooriordan@cambridgema.gov
Subject: RE: Public Hearing to Remove Trees from Vellucci Plaza
Reply-To: DEBRA MANDEL <debmandel@comcast.net>

Dear Mr. O'Riordan,

Please KEEP the trees in Vellucci Plaza. I am unable to participate in Tuesday nite's hearing and am writing to express my point of view. I have lived in Inman Square overlooking Vellucci Plaza for 35 years and can attest to the importance of the Plaza. The 50 year-old honey locust trees, in particular, provide important shade on hot days, a place for birds to sing. The Plaza as a whole provides an important respite from a busy intersection, where people can meet, hang out, play and host creative community events.

Vellucci Plaza has been neglected for many years. Maintenance and trash pick-up has been abysmal. It is very sad to see that a Plaza with so much more potential has been given short shrift, rather than helping to maximize its unique qualities. There's no way that a segmented Plaza can serve as an open public space, when it is less open and doesn't serve the interest of the entire community.

I write this with a heavy heart, as destruction of these trees and this Plaza is a painful thought. Is there something you can do in the meantime to keep Vellucci Plaza clean and honor its importance and natural beauty?

Sincerely,

Debra Mandel

242 Hampshire St.

Cambridge, MA 02139

Lefcourt, David

From: Lynne Hall <lynnehall43@gmail.com>
Sent: Sunday, April 08, 2018 12:49 PM
To: CDDat344; Lefcourt, David
Subject: Letter re: The Inman Square Reconfiguration Plan

Dear City Councilors,

I am writing to support the city's reconfiguration plan for Inman Square. While I live in Cambridgeport, I go through Inman Square every day to go to classes and my health club. As we all know, it has been a dangerous intersection for cars, cyclists and pedestrians and the Vellucci Plaza is a very uninviting spot.

I feel that the plan addresses these concerns well. While some people object to the cutting down of trees, I feel that the plan has taken this into account by the abundant planting of new trees, the reduction in asphalt, and the increased use of reflective pavers- the heat island will be the same in 10 years. As trees continue to grow, the heat island will be reduced even further.

Another concern of residents has been that some local businesses have failed, and others are in danger of failing, as pedestrian traffic has not been sufficient to sustain them. I believe that the redesign of the Vellucci Plaza will encourage more foot traffic and more people will patronize these businesses.

This has been a very long (18 months) and thoughtful process with 5 community meetings. I think it is time to approve the plan and make Inman Square safe and more functional.

Sincerely,

Lynne Hall
154 Auburn Street
Cambridge

Lefcourt, David

From: Gita Devi Manaktala <manak@mit.edu>
Sent: Sunday, April 08, 2018 12:54 PM
To: Lefcourt, David; CDDat344
Subject: FW: In support of the Inman Square intersection plan

Dear David and Iram,

Apologies — re-sending with the correct address.

Best wishes,
Gita and Ben

From: Gita Manaktala <manak@mit.edu>
Date: Sunday, April 8, 2018 at 11:51 AM
To: "citycouncil@cambridgema.gov" <citycouncil@cambridgema.gov>, "dlefcourt@cambridgema.gov" <dlefcourt@cambridgema.gov>
Cc: "citymanager@cambridgema.gov" <citymanager@cambridgema.gov>, "lisap@cambridgema.gov" <lisap@cambridgema.gov>, "cddat334@cambridgema.gov" <cddat334@cambridgema.gov>, "jbarr@cambridgema.gov" <jbarr@cambridgema.gov>, Ben Tobin <bltobin@gmail.com>
Subject: In support of the Inman Square intersection plan

To the Cambridge City Council and Arborist,

As residents whose family is routinely terrorized by one of the most dangerous intersections in a city full of perilous crossings, we are writing to offer our strongest support for the Inman Square Intersection Improvement Plan. Although we understand and share some residents' concerns about the loss of trees required for the plan to go forward, we hope and expect that the proposed plan will improve this ghastly, inhumane intersection and enhance the livability of Inman Square. We ask that the city find ways to maintain the tree canopy and make sure that trees lost to the intersection plan will be replaced with new ones in appropriate locations. The safety of the intersection must be the city's priority.

It is very clear to those of us who walk and cycle in Cambridge that our safety has rarely been a priority for decision makers, compared with the need for unfettered automobile traffic. The result is a despoiled riverway and a city full of fast moving cars and hazardous intersections that cannot be safely navigated without the aid of crossing guards, because of cars turning right and left at high speed, with no concern for pedestrians crossing legally and with the light. Jaywalking is the only safe course for pedestrians in this city, because the intersections are so bad. The Inman Square intersection plan is a small and vital step toward improving the safety and sanity of those who travel by foot and bike in this neighborhood, and we believe it will improve things for motorists as well.

Thank you,

Gita Manaktala and Ben Tobin
65 Antrim Street #1
Cambridge, MA 02139

Lefcourt, David

From: sheliwortis <sheliwortis@comcast.net>
Sent: Sunday, April 08, 2018 1:26 PM
To: Lefcourt, David
Cc: City Manager; Peterson, Lisa; CDDat344; Barr, Joseph; City Council
Subject: Inman Sq. Intersection Improvement

Dear David Lefcourt :

I am writing in support of Inman Square residents to urge your support for the Inman Square Intersection Improvement Plan. The residents have, no doubt, explained their reasoning in correspondence, and I trust that they have been to meetings and studied the Plan enough to merit everyone's support.

The residents also urge that "the city commit to maintaining a tree canopy within a 1/3-mile radius of Inman Square that is 5% larger 10 years from now than it is today. Such a commitment would be fulfilled by, for example, planting additional trees in the neighborhood if those originally planted die." This request also merits support.

Many thanks for your consideration,

Sheli Wortis

106 Berkshire St.

Cambridge, MA 02141

Lefcourt, David

From: Jane Tenenbaum <tenenbaumdesign@gmail.com>
Sent: Sunday, April 08, 2018 2:27 PM
To: Lefcourt, David; O'Riordan, Owen
Subject: the trees at Vellucci Plaza, Inman Sq.

Please! We need to protect the few trees that still (sort of) thrive in Inman Square. The canopy in Cambridge is diminishing; please don't add to our mostly concrete streetscapes.

There are already enough replacement trees planted in inhospitable locations where they likely won't thrive.

Jane Tenenbaum
Cambridge 02138

April 9, 2018

Megan Brook
103 Inman St.
Cambridge MA 02139

David Lefcourt, City Arborist
Department of Public Works, 147 Hampshire St.
Cambridge MA 02139

re April 10 hearing for removal of trees in Vellucci Plaza

Dear Mr. Lefcourt,

The proposed destruction of the present version of Vellucci Plaza has aroused a great deal of local contention. There are people who dislike the little park as it is, who say it could better serve the public in another form. There are those who don't object to it, but who accept the Traffic Division's view that the intersection in Inman Square is no longer tenable and that the plaza is a reasonable sacrifice. Then there are those who oppose in almost every case the felling of any more or less healthy mature tree in the city.

My opinion, with which some other residents of the neighborhood agree, differs a little from all those positions. I think that the Traffic Division has not made the case for the re-organization of the intersection itself, and until they do, your department should make no actual plans to cut down any Vellucci tree. I feel they should not be asking you to spend any time on this matter at this point.

At meetings and in email messages to City officials, I have asked that the City provide to the Cambridge public the official report of the fatal bicycle accident which occurred as Traffic began presenting its case to change the intersection. This report, officials tell us, has still not been written, although years have passed and the accident is always raised as a reason for the project. We can't imagine any *good* reason why the report is not available, but I and others from the neighborhood can imagine *political* reasons: it might blame unfortunate chance and the victim, rather than the infrastructure which Traffic, their consultants, and the contractors who watch their every move, so very much want to alter. I have stated my view that no decision should be made until we see that report, and I know that other residents agree.

I have also asked for the statistics on crashes in Inman Square since Traffic instituted the no-left-turn rule and marked the bike lanes. Joe Barr tells the public at every meeting how Inman Square had more crashes than any other Cambridge intersection over five years (before those alterations); but he has no statistics (!) for the stretch of time since. We who walk through, drive through, or observe the traffic flow from shop windows in the square, can see how much smoother the flow is. Certainly we have heard of no subsequent bicycle fatality, praise be. We have no doubt that the statistics I am asking for are available to Joe Barr, but it does not suit his agenda to gather them or to announce

Lefcourt, David

From: robert mccarthy <pahatech7@yahoo.com>
Sent: Monday, April 09, 2018 4:49 AM
To: Lefcourt, David; O'Riordan, Owen; John Pitkin
Subject: Velucci Plaza Tree Removal

Dear Sirs ~~

I am not in favor of the proposed removal of the stately shade trees in Velucci Plaza. I understand the City's plans are to plant new, young growth trees to provide shade in Inman Square. However, my observations over the last 10 years or so show me the trees the City is selecting to "rebuild" the City's tree canopy are many times skimpy like the one in front of my condo on Cambridge St. That tree was planted in 2007 or 2008. Even after 10 or 11 years, that tree provides no shade. You can pretty much count the leaves on the tree and its branches extend upwards and do not spread out. Despite its effort to reach the sky, it does not appear it has grown vertical or horizontal limbs. For me, this tree looks more like an ornamental one than a shade providing one.

I am in my 60s and grew up in the shade of Cambridge trees. With what I see being planted on the streets, I am discouraged about the City's intent to really create an effective tree canopy. The next generation should shame the City for having taken away such viable sources of shade like the ones in Velucci Plaza. If the City is going to cut down such beautiful and useful trees, they should be willing to replace them with substantial shade trees not trees which are "convenient" for the City's maintenance program.

Somerville also appears to have chosen to continue to cut down perfectly wonderful shade trees. This tells me that the urban planners, at least in this area, are more concerned about design than about the comfort of City dwellers. All summers from 2000 forward have been reported by our local meteorologists as increasingly warmer than the summers previous. This indicates that we can expect this summer to be hotter than last year's and so forth. This should tell the City that shade trees should be a primary concern not an afterthought of design.

Respectfully submitted,

Robert McCarthy
Cambridge St
Cambridge

Lefcourt, David

From: Larry Rosenberg <larry.rosenberg@gmail.com>
Sent: Monday, April 09, 2018 12:37 PM
To: City Manager; Peterson, Lisa; Barr, Joseph; City Council; CDDat344; Lefcourt, David
Subject: I support the Inman Square Intersection Improvement Plan

To Cambridge city officials:

I write to offer my wholehearted support for the Inman Square Intersection Improvement Plan. I am keenly aware of the problems (and dangers) of the intersection, and I'm also aware of the difficulty inherent in balancing the interests and concerns of many residents who have made their voices heard over the past year. I think you've done a very good job in coming up with this plan, and I also think you've done a good job in soliciting community input and taking it into account.

Like many people, I care about trees. But I urge you not to let concern about trees get in the way of moving forward with the plan you are pursuing. To compensate for the loss of trees in Vellucci Plaza (and because planting more trees is a good idea pretty much all the time), I urge you to commit to planting additional trees on the blocks near Inman Square.

Thank you for your consideration.

Larry Rosenberg
48 Antrim St.
home: 617-497-1112
cell: 617-955-3098

Lefcourt, David

From: Judy Somberg <judy_somberg@igc.org>
Sent: Monday, April 09, 2018 1:21 PM
To: City Manager; Peterson, Lisa; Barr, Joseph; City Council; CDDat344; Lefcourt, David
Subject: RE: I support the Inman Square Intersection Improvement Plan

I also support the Inman Square Intersection Improvement Plan, as outlined by my husband below. I live on Antrim Street and have gone to all the meetings and presentations, including the Inman Square Neighborhood Association meetings, about the plan. I am very concerned about safety in Inman Square, and although the left hand restrictions make it hard to drive onto Antrim Street, and some trees will be lost, I think it is important to move forward. I am a home gardener and love and plant trees myself.

Judy Somberg
48 Antrim Street

From: Larry Rosenberg <larry.rosenberg@gmail.com>
Sent: Monday, April 09, 2018 12:37 PM
To: citymanager@cambridgema.gov; lisap@cambridgema.gov; jbarr@cambridgema.gov; citycouncil@cambridgema.gov; cddat344@cambridgema.gov; dlefcourt@cambridgema.gov
Subject: I support the Inman Square Intersection Improvement Plan

To Cambridge city officials:

I write to offer my wholehearted support for the Inman Square Intersection Improvement Plan. I am keenly aware of the problems (and dangers) of the intersection, and I'm also aware of the difficulty inherent in balancing the interests and concerns of many residents who have made their voices heard over the past year. I think you've done a very good job in coming up with this plan, and I also think you've done a good job in soliciting community input and taking it into account.

Like many people, I care about trees. But I urge you not to let concern about trees get in the way of moving forward with the plan you are pursuing. To compensate for the loss of trees in Vellucci Plaza (and because planting more trees is a good idea pretty much all the time), I urge you to commit to planting additional trees on the blocks near Inman Square.

Thank you for your consideration.

Larry Rosenberg
48 Antrim St.
home: 617-497-1112
cell: 617-955-3098

Lefcourt, David

From: Ed White <edwhite1001@gmail.com>
Sent: Monday, April 09, 2018 5:18 PM
To: O'Riordan, Owen
Cc: Lefcourt, David
Subject: Velucci Park

Dear Sirs,

I'm writing about the proposed project in Inman Sq. I am a lifelong resident of Cambridge,(actually 3rd generation resident of Cambridge) I'm very upset about the proposed loss of the mature trees in the Inman Square. The destruction of the trees to change traffic flow simply because pedestrians , cyclists, and motorists won't obey common traffic regulations is just wrong.

The intersection is just that, a place where roads intersect. It's been notorious in my lifetime for poor signage, traffic signals, and most importantly enforcement!

I'm sure that crossing guards, or more Police presence would be a lot less expensive than the millions to dig up the street and kill the trees. Not to mention the months of traffic mayhem this will cause. There are better ways for you to spend Our Money!

The idea to cut down the mature canopy, replace them with sapling twigs (as one resident referred to them as), will make Inman Sq look like the barren wasteland that the City of Somerville created on Beacon Street. This was not the plan when the park was created many years ago.

What ever happened to the phrase " lovely tree lined street"? Realtors won't be saying that anymore.

Please consider the wishes of the people who call this area home, not just those who are passing through.

Thank you.

Sincerely,

Ed White
2 Highland Park
Camb, MA 02139

Lefcourt, David

From: Phyllis Bretholtz <pbretholtz@gmail.com>
Sent: Monday, April 09, 2018 8:30 PM
To: City Manager; Peterson, Lisa
Cc: Watkins, Kathy; Lefcourt, David; Friedman, Jerry
Subject: My latest thoughts about the city's plan to redesign Inman Square

I am writing to all five of you as you have shown yourselves to be deeply involved in what happens in Inman Square.

I know that you probably care deeply about the trees both in Inman Square, and in the city. I know you may have some reservations about the city's plan to redesign the Inman Square intersection, which would involve cutting down 4 trees. But, late Sunday night, I received the email sent from The Friends of Inman Square, which prompted a very passionate response from me which I am now sharing with you. To frame my comments, let me also add that the tone of The Friends email implies that if you do not agree with them, you are not a friend of Inman Square. And their language stating "*When the facts about this project are aired in public hearings, we believe that the arguments for the City's preferred design and dividing Vellucci Plaza into two pieces will melt like the slush after an April snow flurry.*" is hardly an invitation to work collaboratively on best outcomes for the future of Inman Square. After reading all of this, I hope that you will consider supporting the city's plan for the redesign.

Here are my thoughts followed by a copy of The Friends of Inman Square message:

I am finding myself filled with sadness about the intersection plan and controversy. When 4 of us created the Inman Square Neighborhood Association in November 2016, the goal was to create a place and space for neighbors to come together and to get to know one another better. One of the issues at that time was the future of Inman Square, particularly in the face of the loss of some key businesses like Stellabella Toys and Boutique Fabulous, among them, that brought foot traffic in to the square and contributed to some of the vitality of the streets during the day. Then the city proposed redesigning Vellucci Plaza. Those of us who had made a commitment to trying to keep businesses in the square and to bringing neighbors together saw this as an issue to unite the neighborhood. We began to think about recreating the intersection with an inviting place where we could sit outside in a space closer to the businesses, a place with tables and chairs and trees and lights and maybe even a water feature. We were excited, especially since the existing Vellucci Plaza is rarely used. The landscape is static and uninteresting; the benches have no backs and are placed in a way that does not allow people to talk with one another. And, the trees, to the extent that they provide any shade, have not succeeded in contributing to an inviting place. As the city began to design a new plaza, the main concern has been, and continues to be a safety issue for pedestrians, bikers, drivers. And that has driven their concept. But, at some point, the concern for 4 trees has taken on a life of its own, without any mention of or attention to the other concerns. Now, for some of our neighbors, nothing else is important as evident from the message included below. There is no mention of safety. There is no mention of the city's intention to plant more trees in the new plaza than exist currently in the plaza. There is no mention of creating an inviting place/space for residents to gather with tables and chairs where we can sit outside, share food without crossing a very busy street. The only expressed concern is for these 4 trees.

As you may or may not know, I love trees. I actively worked to save the Silver Maple Forest at Alewife. I garden furiously. And, in fact, when an elm in front of my house died of Dutch Elm

disease and had to be cut down, I invited all my neighbors on Antrim Street to be present; I served mimosas and cookies and read tree poems. I celebrated the life of that tree and was deeply distressed by its loss. Then, I immediately requested the city to plant another tree in front of my house. That is the tree that has grown rapidly and is now taller than my three story house.

I am concerned about the loss of the 4 trees. I am concerned about the impact on the environment. But, even in the existing park, no matter what happens, the city plans to plant more trees. Another part of their plan for Inman Square is to plant more trees on Springfield Street. And, those of us who share concerns about trees in the neighborhood have written to everyone we can think of, councilors, city manager, DPW, traffic department, community development, stating that

"(i)n recognition of the urban canopy's importance, we request the city commit to maintaining a tree canopy within a 1/3-mile radius of Inman Square that is 5% larger 10 years from now than it is today. Such a commitment would be fulfilled by, for example, planting additional trees in the neighborhood if those originally planted die."

So, you can understand my sadness and frustration with the tension and even hard feelings created around this issue, with the focus only on these 4 trees. I would love to talk more with you about this situation. I plan to attend the meeting on Tuesday at the DPW, but my concern is with the longer view of the future vitality of Inman Square, an increased tree canopy in the neighborhood, the safety of the intersection, and the creation of a beautiful place for neighbors to gather.

I know most of you will be at the meeting at the DPW on Tuesday and we can talk more there. However, feel free to call me at 617-967-5027 if you would like to talk more about any/all of this.

In peace and appreciation for your careful consideration,
Phyllis

From: Friends of Inman Square <inmantrees@earthlink.net>

Date: April 8, 2018 at 1:08:12 PM EDT

To: Recipient list suppressed.;

Subject: PUBLIC HEARING on removal of the trees in Vellucci Plaza, Tuesday, April 10. Please come!



RESIDENTS
NEIGHBORS
AND FRIENDS
OF INMAN
SQUARE

We're writing to let you know that the City has scheduled a **tree hearing this Tuesday, April 10th at 5:30 pm** for removing the shade trees at Vellucci Plaza. The hearing will take place at the **Department of Public Works headquarters, 147 Hampshire Street.**

This will be the first formal hearing on the Inman Square redesign project prior to a vote by the City Council, expected in late May or early June and which will likely determine whether the project goes forward. The hearing will be very different from the ad hoc "community meetings" conducted by the Traffic Department over the past two years about the project. The procedures for public hearings are clearly defined and provide for oral and written statements pro and con, and these become part of a public record. The process is predictable and transparent and ensures official accountability.

When the facts about this project are aired in public hearings, we believe that the arguments for the City's preferred design and dividing Vellucci Plaza into two pieces will melt like the slush after an April snow flurry.

If you support keeping these mature shade trees, we hope you will join us and speak at the meeting on Tuesday. Your voice matters!

If you are unable to attend, please take a few moments to send emails to:

- David Lefcourt, City Arborist, dlefcourt@cambridgema.gov
- Owen O'Riordan, DPW Commissioner, ooriordan@cambridgema.gov

Written statements can be submitted both in advance and at the hearing. **Your opinion matters!**

There will be another public hearing on the project before the Mid-Cambridge Neighborhood Conservation District Commission on Monday, May 7. We expect that there will be other hearings before the Council votes, but these have not yet been scheduled, and we will let you know when they are.

Thank you!

Sharon DeVos, Andrew Hovey, Deb Mandel, Shannon Noyer, John Pitkin, Elena Saporta, Florrie Wescoat, Ed Woll
for the *Residents, Neighbors and Friends of Inman Square* and the campaign to save Vellucci Park and the trees in Inman Square

Visit our website www.saveinmansquare.com for more information.

them publicly. The bicyclists are not clamoring for them.

This kind of trickery is of a piece with so much of what the City administration does, especially when its favorite contractors are concerned, and lies at the heart of the mistrust felt towards it.

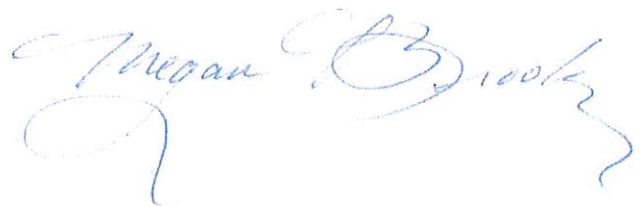
The Traffic Division continues to present these massive changes as inevitable. We see at least two years of enormous disruptions in Inman Square: unbelievable traffic snarls; dust and noise and stink, the City's carbon footprint rising; the firehouse probably closed again, to our detriment in any local fire; serious difficulties for ambulance drivers and possibly patient deaths due to delays in transiting the square; and all this, for what they now call \$6 million, tax dollars better spent on resilience. And we want the City to prove that the changes that Traffic should obviously have made long ago (no-left-turns and bike lanes) are not improvements enough, until we have five years of statistics on crashes with them in place.

It follows that I oppose the tearing up of Vellucci Plaza, at least for now. It isn't the *most* engaging public space around; its trees are not the *most* majestic; its benches sometimes attract the kinds of folks who scare some other kinds of folks. But the perfect is the enemy of the good enough. The City reconstructed it fairly recently, let's remember, and constant churn is wasteful. Another branch of the DPW is asking us to reduce what we send to landfills; demolishing it will not help us to that end, and I for one would like to see some consistency from DPW! The plaza trees have finally reached some sort of shade-producing mass. The pretty river-stone paving won't be saved, in any scheme to divide the plaza and locate its main space across the street. The unity of the space has some value, which we will lose under the proposals.

The people presenting the re-design of the plaza at meetings make a big deal out of their idea to add trees to the municipal parking lot off Springfield St. and to re-pave it with more reflective surfaces. This, they tell us, will make up for the loss of the trees which have been growing in the plaza since its last incarnation and will further Cambridge's resiliency goals. But our resiliency plans should *already* include trees and lighter pavements, (and maybe even coverings of solar panels) for every parking lot in the city which is big enough to deserve the name. So I don't see why we should congratulate the designers for this supposed solution to the loss of existing trees. I feel insulted every time I see this concept presented in such a light.

I regret being unable to attend the hearing due to a prior appointment. Hoping this finds you well, and that it offers a useful perspective as you consider the proposals from the Traffic Division,

Sincerely yours,

A handwritten signature in blue ink that reads "Megan Brooks". The signature is written in a cursive, flowing style with a large, decorative flourish at the end.

NOTICE OF A PUBLIC HEARING
Removal of Public Shade Trees
City of Cambridge, Department of Public Works

Pursuant to Massachusetts General Laws Chapter 87, Sections 3 and 4, a public hearing will be held on Tuesday, April 10th, 2018 at 5:30 p.m. at the DPW Main Conference Room at 147 Hampshire Street, Cambridge, Mass., to consider the removal of the following public tree(s):

1. **Talbot St** – Removal of 2 trees (21” honeylocust & 7.3” crabapple) for drainage and streetscape improvements. Location will be replanted.
2. **Hampshire St at Cambridge St (Vellucci Plaza)** – Removal of 4 honeylocust (14.2”, 16”, 14.7”, & 13.3”) for pedestrian, bicycle, and traffic safety improvements. Location will be replanted.
3. **237 Hampshire St** – Removal of 3.5” oak for Inman Square project involving pedestrian, bicycle, and traffic safety improvements. Location will be replanted.

The tree(s) identified above have been posted for public inspection. Any objections to their removal must be submitted in writing to the City Arborist, prior to or during the hearing. The mailing address for the City Arborist is Department of Public Works, City of Cambridge, 147 Hampshire Street, Cambridge, MA 02139; phone: 617-349-6433 email: cambridgetree@cambridgema.gov

Lefcourt, David

From: Kristine Jelstrup <kejelstrup@gmail.com>
Sent: Tuesday, April 10, 2018 8:37 AM
To: Lefcourt, David; O'Riordan, Owen
Subject: Velluci Park

Dear David and Owen,

We are writing as members of Cambridge Mothers Out Front, an activist movement working to create a livable climate for future generations. Reducing our collective Greenhouse Gas (GHG) emissions is part of our mission. We endorse well reasoned urban design that makes our streets safer and welcoming for biking and walking, thus diminishing our reliance on fossil fuels to get around and lowering GHG emissions.

An equally important feature of good urban design is conserving and maintaining mature trees that sequester carbon and reduce heat in the city. As you are no doubt aware, a recent report, which came out before this winter's storms took down even more trees, states that Cambridge has lost 7% of its tree canopy in recent years. That trend is going in the wrong direction if we are to stave off the effects of global climate change. We fully support efforts to keep the mature trees in Vellucci Park if at all possible.

Mothers Out Front Cambridge is asking you to carefully consider all the options on the table for the redesign of Inman Square, and to choose the one that will best serve all the citizens of Cambridge.

Respectfully,

Ginger Ryan, Mina Reddy, Zeyneb Magavi, Leslie Bliss,

Deidre Deegan, Valentine Talland, Kristine Jelstrup

Lefcourt, David

From: Trlica, Andrew <atrlica@bu.edu>
Sent: Tuesday, April 10, 2018 12:23 PM
To: Lefcourt, David
Subject: Tree removal in Alfred E. Vellucci park

Dear Mr. Lefcourt:

I am writing in response to a sign I saw posted in Vellucci park about a meeting on the removal of public shade trees, and wanted to reach out since I regrettably cannot make the meeting in person this evening.

I am a graduate student in BU's department of Earth & Environment, and I study the impact of urban trees on the local environment. I would like to encourage your office to find any way it can to preserve as many as possible of the trees in the park, and along our streets in general. Decades of research on the effect of trees in the urban environment have shown that besides their aesthetic benefits, trees provide valuable local services including improving air quality by removing dust and pollution, reducing noise, providing habitat for local wildlife, and improving certain metrics of human health and wellbeing. Of special importance is the local climate cooling provided by mature trees: My own research into the Urban Heat Island in the metropolitan Boston region has shown that Cambridge and Somerville have some of the lowest overall tree cover of municipalities in the region, and as a result among the highest summertime temperatures. In cities across the globe, high summertime temperatures are the cause of a host of health problems and even deaths, and if Cambridge wishes to reduce the burden of summertime heat extremes on its residents, preserving tree cover would seem to offer the most straightforward path. Trees also store and absorb fossil fuel emissions from the air, helping Cambridge to reduce overall its climate changing emissions.

As I am sure you well know, once a large mature tree is cut it is next to impossible to replace except through time and replanting — and a very high number of vulnerable young urban trees do not even live long enough to reach maturity. Though I am sure there are many competing and legitimate interests and stakeholders in the debate about how to allocate and use scarce public space, please have a thought for these lovely old trees, working tirelessly as they do on our behalf year in and year out.

Please do not hesitate to contact me to discuss further.

Yours very truly,

Andrew Trlica

Ph.D Candidate, Geography
Boston University | Earth & Environment

Lefcourt, David

From: Shannon Noyer <snoyer55@gmail.com>
Sent: Tuesday, April 10, 2018 4:42 PM
To: Lefcourt, David; Cambridge Trees
Subject: Objection to removal of Vellucci Plaza Trees

Good afternoon,

I am unable to attend the tree hearing this evening, but please find the below statement stating my objection to the removal of the trees in Vellucci Plaza.

Dear Mr. Lefcourt:

We are writing to voice dissent over the removal of the trees in Vellucci Plaza for the Inman Square redesign project.

By definition, an arborist is an individual trained in the art and science of planting, caring for, and maintaining trees. One of the many jobs performed by an arborist is determining if tree removal is necessary based on the health of a tree in circumstances where the tree might otherwise not be saved and when leaving the tree poses safety risks. One would be hard pressed to find a credible source stating that a job function of an arborist is to support the removal of trees for development purposes.

The City of Cambridge DPW website states, *"Tree removal occurs when trees are dead, dying, diseased, or hazardous. Public trees are protected by Massachusetts State Law Chapter 87. ...**We do not remove City trees without good reason.** We do not remove trees because they drop leaves or acorns, because it has grown too large or shades your lawn, or **because it is not conveniently located.**"* Unfortunately, it seems that the city risks doing just that in removing the trees in Vellucci Plaza.

The trees in Vellucci Plaza seem healthy and viable, are not posing a hazard to the public, and provide much needed canopy in a growing heat desert. As residents living adjacent to Vellucci Plaza, these trees provide shade, as well as noise and air pollution mitigation to our building. While the premise of the Inman Square redesign project is improving safety, these trees pose no safety risks, and disregarding their value is short-sighted and negligent. On numerous occasions, city officials have stated that they did not set out intending to reconfigure Vellucci Plaza, but that the community voiced a desire to see the plaza relocated. The city cites anecdotal, unscientific and incomplete surveying to indicate this push to relocate the plaza. It sets a dangerous precedent to remove these trees based on the desires of people in the community who may or may not be motivated by other factors. In essence, these trees ARE being removed because they are not conveniently located.

The idea that these mature trees can easily be replaced by planting new trees is incomplete. By the city's own admission, it will take years for new trees to reach the same level of canopy provided by these four trees. They fail to consider that these trees will continue to flourish. We should be planting new trees and tending to them with the same care that was provided to the trees in Vellucci Plaza; we should not be planting new trees because we are cutting down mature trees for convenience.

We are facing a climate crisis and it is well established that trees are a critical component of the fight against climate change. While the loss of four trees does not seem significantly impactful, when you consider over 30 trees were recently removed from Beacon Street and new projects are proposed each day in Cambridge and surrounding cities that could result in tree removal, we need to consider the overall picture of what these choices are doing to our environment.

We implore you deny removal of these trees.

Respectfully,

Chris and Shannon Noyer, 254 Hampshire St.

Lefcourt, David

From: Becca Wolfson <bwolfson@bostoncyclistsunion.org>
Sent: Tuesday, April 10, 2018 4:46 PM
To: Cambridge Trees
Cc: Barr, Joseph; Seiderman, Cara; City Council; Farooq, Iram; DePasquale, Louie; Cambridge Bicycle Safety
Subject: Regarding the tree removal for Inman Square and Velucci Plaza redesign -- please move the project forward

To the Cambridge City Arborist,

I'm writing to you today since I understand you will be conducting a hearing tonight that involved discussion on the removal of 4 or 5 trees from Inman Square, to facilitate the Inman Square road design for transportation safety.

The goals of the Inman Square re-design are to make the square, specifically the large intersection of Hampshire and Cambridge Streets, safer for people biking and walking -- the most vulnerable road users. This is in line with the City's stated commitment to Vision Zero as a policy, and also as a direct response to the dangers highlighted by the fatal crash that took the life of Amanda Phillips in June of 2016, while she was riding her bike away from Inman Square.

While we -- an organization with a mission to make it safe and comfortable for people of all ages and abilities to ride a bike as transportation, and a strong commitment to vision zero implementation -- would have been satisfied with a design that solely focused on safety of vulnerable road users, local residents and business owners expressed a strong desire for the plan to also shift the Velucci Plaza to better serve businesses. The plan that was ultimately a compromise for everyone makes the most of the opportunity for a large re-construction project, to fix the traffic and safety operations of Inman Square, and provide an opportunity to revitalize struggling businesses in the square.

We have grave concerns that the vocal opposition from a small group of people at the loss of the 4-5 trees will further hold up the project. Of course, trees are an extremely important part of our urban fabric. They contribute to livability, they provide shade, comfort, and environmental benefits. We in no way question their importance. However, we will always be faced with tradeoffs. As **transportation is the number one contributor to greenhouse gasses in Massachusetts**, it is imperative that we provide people with transportation options that get them out of single occupancy vehicles. The amount of carbon that a tree can sequester is moot if we can get hundreds, even thousands, more people out of cars and onto bicycles. We know that while Cambridge boasts one of the highest percentages of people who travel by bike in the country, it could be much, much higher. Biking in the City of Cambridge still poses dangers that many are not willing to face.

Again, while the loss of four to five trees is still a loss, in the grand scheme, mode shift, safety of vulnerable road users (**humans!**), need to be placed at a higher value than a handful of trees, and the project moved forward as expediently as possible. We were also pleased to see City staff constructively figure out how to plant even more trees than are being removed.

Last, though Boston is in our name, our geographic focus as an organization is the metro core -- we advocate for biking and bike facilities in Boston, Cambridge, Somerville and Brookline. For some context, we've been involved and working with both residents and the city in Boston as they have been working on a Complete Streets re-design for Melnea Cass Blvd in Roxbury. Roxbury residents have a lot to worry about when it comes to the urban heat island effect and climate resilience, and as one of the lowest-income neighborhoods of Boston that has faced decades of disinvestment, tree canopy is also extremely limited. For the Melnea Cass Blvd re-

design, [residents cried out when the City's initial plan proposed removal of 259 beautiful shade trees along the boulevard](#). After multiple years of advocacy around the project and saving the trees, residents working with and pushing the city to save more trees, 159 were slated for removal last November. Still unsatisfied, after continued advocacy, now 60 trees will be removed for the project to be completed -- to fix a street that has numerous injury crashes every year, and will save lives. Sixty is still a lot. And the trees that are removed one by one throughout Cambridge compound the problems for sure, but I can't say enough that making our streets more welcoming for people to bike, walk, and transit should be held at the highest priority, due to their ability to mitigate environmental impacts much more than any single tree. I understand the emotional attachment to the trees in Velucci Plaza, but I implore you to approve of the removal of these trees and sign off on the Inman Square redesign.

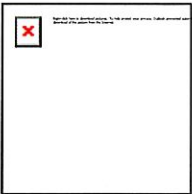
Personally, I am no outsider to the square. I live in Union Square Somerville, and bike through Inman Square and other neighborhoods of Cambridge every day on my way to our office in Roxbury. I would feel much safer if the square was redesigned, and be much more likely to bike through and to Inman Square as a destination, and know thousands of others would as well.

Now, it is time to move the project forward. The fatal crash that killed Amanda Phillips was almost two years ago -- if this project is held up any longer, lives are at stake. Please do not hesitate to contact me with any questions or concerns.

Best,
Becca

--

Becca Wolfson
Executive Director
Boston Cyclists Union
315.345.6532 (mobile)



Want to join the movement for better bicycling? [Become a member!](#) [Volunteer!](#) [Sign up to get our e-alerts and newsletters!](#)

Lefcourt, David

From: Sharon deVos <sharondevos@gmail.com>
Sent: Tuesday, April 10, 2018 5:17 PM
To: Lefcourt, David
Subject: Trees in Vellucci Plaza

Dear Mr.Lefcourt,

I am writing to express my concern about the proposed loss of the beautiful honey locust trees in Vellucci Park, and the loss of the open space that has been available to all who live or work in the area or just pass by.

There is a fair amount of confusion and lack of understanding about the proposed changes and what it will mean in terms of the environment so I need to ask questions as well as make comments so I will have a better understanding.

I have seen that the projected tree canopy, if not destroyed will be 20,000 sq ft in 10 years,and yet, *have seen that the current analysis shows that the existing tree canopy within the project area is approximately 20,000 sq ft now. Please explain the analysis.*

The better health care scenario indicated that the resultant area would be approximately 27,000 Sq ft. Why would the city not provide best health care to existing trees to promote health and growth? Have calculations been looked at for existing canopy in 10 years if best care is provided and the trees are not lost?

Even under current maintenance wouldn't the tree canopy be expected to increase?

The tree canopy estimates in the 100,000 sq ft study are was calculated to be 18,200 in 2009 and 20,000 in 2014. Is it reasonable to assume that the tree canopy has not increased in the past 4 years?What do you think the canopy is likely to be currently?

What is the projected canopy for the projected trees planted in the parking lot on Springfield Street? Shouldn't the parking lot be planted in either scenario?

I do not expect that you have all of the answers now,but I will very much appreciate getting the answers so I better understand.

Thank you very much.

The city is proposing 3 different landscape designs for the new plaza. What are the canopy calculations for each? They seem to vary .

The proposed plans seem to be very crowded and not planned for expected growth. I am concerned about safety for pedestrians and bicyclists who may not be visible to cars and trucks entering and leaving the two driveways.

What is the sq. footage of Lafayette Plaza? There are 10 trees in the plaza, none of which is more than 7 calipers. most are probably 3. Were trees planted somewhat sparsely because the area was intended to be used for a variety of activities?

Lefcourt, David

From: Jacqueline King <jackiedeeking50@gmail.com>
Sent: Tuesday, April 10, 2018 6:01 PM
To: Barr, Joseph; Lefcourt, David; City Council; City Manager; Peterson, Lisa
Subject: Inman Square

Dear City Councilors and Cambridge officials,

I wholeheartedly support the Inman Square intersection plan! My family and I have lived in Cambridge for almost 50 years. Inman Square has been an important part of our lives. We have always come to Inman Square to visit restaurants, toy shops, hairdressers, music venues, medical facilities, and close friends.

So, we know how difficult and sometimes dangerous it is to travel through this square. We know that the city has had many public meetings for the past 18 months and has explained that this is the safest design. This factor, alone, would be a primary reason why I and my family support the plan.

But... We're also excited because the new plaza along Hampshire Street next to the businesses would be a good place for people in the neighborhood (and elsewhere) to gather, socialize, and patronize local businesses. The old Vellucci Plaza was rarely used because we had to cross a very busy intersection.

Some people are upset that trees will be removed from the old Vellucci Plaza. We are too! But, we are encouraged by the fact that the city has promised that it would plant more trees, use less asphalt and use reflective pavers to make the heat island the same in 10 years as it is today. If even more trees were planted close to the intersection, then the tree canopy would further increase.

Please help push the Inman Square intersection plan forward! We're counting on you.

Sincerely,
Jacqueline Dee King
40 Essex Street
Cambridge, MA 02139

Lefcourt, David

From: Sara Mae Berman <saramaeb@verizon.net>
Sent: Wednesday, April 11, 2018 1:33 PM
To: Lefcourt, David
Subject: 6 trees in Vellucci Park & Inman Sq re-design

Dear Mr. Lefcourt,
Here is the letter I emailed to City Council before their meeting of April 2.
Thank you for caring for our city trees.
Sara Mae Berman

Dear City Council,
23 Fayette Street in the Inman Square neighborhood has been my home since 1958, 60 years. I walk, bike, and drive in my neighborhood and around the city. I am eager to promote safe travel for all modes of transportation.

I support The Alternative Plan for the Inman Square, the one that preserves Vellucci Park and its 6 mature trees. These trees were planted in 1980, and watered lovingly by two Antrim St. neighbors, both named Jane.

I do not want to see Vellucci Park diminished, and have its effectiveness as the oasis destroyed. It is the only big open space in the whole of Inman Sq. area, with 6 trees now mature enough to provide shade, with seating, and for holding small events. These 6 trees took about 50 years to grow to the shade-providing size they are now. They provide a leafy respite in our densely built-up neighborhood, whether or not I (or others) actually sit there.

The Alternative Plan for the Inman Sq still allows Cambridge St-Hampshire St intersection to be adjusted so there isn't the wide no-man's land in the traffic middle of the square. Yet it preserves Vellucci Park and its 6 mature trees.

Some are concerned with providing a park-like apron or small plaza for the nearby restaurants and health offices which serve our community. But those spaces have changed their uses many times over the decades. (fish market, liquor store, book store, tailor shop, laundry, sundries store, insurance agency, drug store, small appliance store, etc)

New trees planted now, to take the place of the 4 or 6 proposed to be cut down, will take many decades before they are old enough to provide sufficient shade that already exists. The so-called "Current Plan" may be well-meaning, but it doesn't mean well for our neighborhood. We travel through these streets. We live here. We want Vellucci Park and its 6 trees to remain.

I also urge you to drive west on Cambridge St, especially at dusk or at night. The actual driving lane is very narrow. See how erratic the route is. It switches back & forth to allow street parking on one side, then the other. A less-than-cautious driver, one not very familiar with this street pattern, could very easily bump into the last parked car in the line. It's an invitation to accidents, even at 15 miles per hour

Thank you for your attention.
Sara Mae Berman
23 Fayette St.
Cambridge, MA 02139

Lefcourt, David

From: Michael Carr <mhpcarr@gmail.com>
Sent: Tuesday, April 10, 2018 3:51 PM
To: Lefcourt, David
Subject: Vellucci Plaza

Hello,

I am writing to express my opinion on the proposed relocation of Vellucci Plaza and the removal of several Honeylocust trees in the current plaza. I live on Beacon St in Somerville, right beside the Cambridge city line and one building away from the plaza; I've lived here for over seven years, and before that resided in Cambridge for over ten years.

I am against the proposed removal of these trees. I believe there must be a possible intersection design for Inman Square that will not make their removal a necessity. These beautiful, old trees are what makes Vellucci Plaza a tranquil spot in the middle of the city, and that is truly of value. The goals of the intersection redesign should not entirely outweigh the value that the local Inman Square residents find in these trees, and I therefore hope an alternate design option is found.

Sincerely,
Michael Carr
4 Beacon St, Somerville

Lefcourt, David

From: Catherine S. Alexander <draftcreature@gmail.com>
Sent: Tuesday, April 10, 2018 4:23 PM
To: Lefcourt, David
Subject: save the Vellucci Plaza trees

Dear Mr. David Lefcourt,

I am for saving the 50 year old locust trees of Vellucci Park. I bicycle through that busy intersection and they, and the little park, are a welcome haven.

Thank-you,
Catherine S. Alexander
Crawford St.
Cambridge.

Lefcourt, David

From: Catherine LeBlanc <zenith29@hotmail.com>
Sent: Tuesday, April 10, 2018 4:27 PM
To: Cambridge Trees
Cc: Zondervan, Quinton; Totten, Daniel
Subject: Inman Sq trees

Dear City arborist:

C. Catherine LeBlanc
14 Tufts St #3, Cambridge

Hi, thank you for the opportunity to contribute to the hearing via email in case I don't make it in person.

I request that the trees not be relocated as it is likely they will not survive transplantation.

The current star configuration of the intersection be converted to a rotary.

A bike, wheelchair & pedestrian bridge could go over the rotary if deemed not enough space on ground for all forms of traffic.

Thank you.

C. Catherine LeBlanc

Lefcourt, David

From: ccassa@gmail.com on behalf of Christopher Cassa <cassa@mit.edu>
Sent: Tuesday, April 10, 2018 4:36 PM
To: Cambridge Trees
Subject: Support of removal for Inman trees

I strongly support the removal of the trees in Inman Sq / Vellucci Plaza for the proposed transit safety and drainage improvements. I am a very strong supporter of our urban canopy and have worked to support tree planting throughout Cambridge. However, I appreciate the need for these safety improvements to this very dangerous intersection and support the proposed tree re-plantings to allow this to happen.

Best,
Chris

--
Christopher Cassa
103 Gore St #2
Cambridge, MA 02141

4/10/18

Honoring the Honey Locusts

John, Helene are growing older,
Stephen, Joy and I am too,
If you destroy our honey locusts,
You leave but a barren view.

And even if you plant new trees
With our second & century we'll be grappling
For only then will grown-up trees rise up
From today's young locust sapling.

Please, good friend don't censure me
May we enjoy this century?
Stop your plotting; stop the chopping
Of our urban forest treasury.

Nancy Messom + Tinkerbell "
617-547-9618

I don't think that changing Velucci
Park - making it smaller or undering
woods - will make it safer for
vehicular traffic or pedestrians or
bikers.

And I drive in this area all the time,
ride my bike and walk.

The issues list below

Cardinal,

Steve Gillis

My support for the City's plan
has been compromised by
the enlightening discussion
regarding the importance of
long-lived trees.

I wish for compromise.
I still support the plan,
& hope we can find a way
to keep the trees.

Lauren Stoler
Inman Street,

I support in poverty

Inman

Sex's

safety

+ feel

process has been adequate

- Notes

Cambridge Tree Hearing

April 10, 2018

Dear Cambridge DPW & City Arborist,

I am writing to express my disapproval of the removal of the Four Honeylocusts in Vellucci park.

Removing these trees compromises the quality of life and health of the square in the areas of air quality, noise from street traffic, shade for enjoyment and recreation, urban heat island, stormwater absorption, ~~heat~~ cooling effects to abutting buildings, traffic calming and finally, the need to address the dramatic increase in summer temperatures.

~~Therefore~~ My objections to removing the four trees in the context of the larger Inman Sq project, as it relates to the tree hearing, is this: the new street realignment will significantly remove the root mass of the remaining two trees. The curb will be placed about 2'-0" to 2'-6" feet from the trunks, as opposed to the existing 7' and 10'. As a result, the position that these two remaining trees can be saved is not viable or is unbounded.

Best regards, Andrew Hovey

112 Windsor Rd, MEDFORD

Tree hearing – April 10

Florrie Wescoat

33 Market St.

The mature shade trees in Vellucci Plaza improve the intersection of Hampshire and Cambridge Streets. A first principle of sustainable design is to assess the natural assets of a site and protect them. The open space of Vellucci Plaza and its trees are assets that need protection. They should not and need not be removed.

Large living trees are not interchangeable landscape elements that can be easily replaced with a number of new trees. It is hard to understand how the promise of tree canopy regrowth after 10 years is a positive thing given the urgency of climate change; it is mature trees that are exponentially more beneficial for shading, cooling, storing carbon above and below ground, and mitigating flooding. And of course, in addition to protecting mature trees, we also advocate planting new trees wherever possible to help make Cambridge more resilient.

Besides the four trees posted for removal, the two remaining ones are also endangered. I know the City would work to protect these two trees during construction, but by relocating the curb very close to the largest tree in the NW corner, substantial tree roots would undoubtedly be severed.

This grove of trees has survived in part because they exist as a community, shading each other and sharing nutrients underground. If 2/3 of the grove is removed, and the remaining trees suffer root damage, lower soil volume, less water and nutrients, and desiccation from hotter conditions, it is hard to see how they can survive.

These existing trees have survived admirably in a harsh, hot, salty location with very little care in the decades since they were planted. So instead of cutting them down I propose that we improve their growing conditions with better soil, and look forward to their continuing growth in the decades to come. Let Vellucci Plaza be a demonstration of Cambridge's commitment to caring for the trees that are there and improving the park. There must be a better solution for Inman Square.

4-10-2018

I OBJECT TO The Removal of The
INMAN SQ TREES FOR ALL THE REASONS STATED
VERBALLY AT TODAY'S TREE HEARING.

CHARLES DEAGUE
23 EDMUNDS ST
NORTH CAMBRIDGE

10 April 2018

I am here to object to the removal of any and all trees in and around Velucci Park near Inman Square. We are living in a time of climate emergency. The USA emits 16 tons per person of greenhouse gases and we need to be emitting 10 tons. We are emitting 10 times too much! We need to do much more about climate change. Your data projects that the ^{tree} canopy will grow as it has in the Past. That will not happen. The weather will not cooperate. Your emphasis on safety will not be relevant in the context of global warming. The weather is all zig-zag 70°, 40°, 70° - the monthly average turns out the same, but the pattern is very difficult for plants, trees, bugs, and so on. The large trees provide many benefits as vibrant ecosystems, that you can't just replace with toothpick size trees. When they become popsicle stick trees they are not going to provide anywhere near all of the benefits of these large trees. There is also way too much paved surface for trees to thrive in the redesigned Inman Square.

I understand Velucci Park is a park and there are legal responsibilities of the City Council - and I will be watching the council closely.

Susan Ringler
82 Kinnaird St.
Comb. 02739

My comments were video taped - so watch the video by Charles Teague.

Subject to removing 4 trees from V. Park,
from Lore Mae Berenson, 23 Fayette St.
For 60 years, 23 Fayette St has been my home,
2 blocks from Surman Square. This is
a very densely built up neighborhood.
After the large triple decker set of buildings
where Hampshire and Cambridge Sts.
burned down and were removed,
the space stayed empty until the
city required it and created Vellucci
Park. The six trees now there were
planted in 1980 and watered regularly
by the Antium St. women (both
named Jane). These six trees now ap-
proach 50 years. They create a leafy
respite in our densely built up
neighborhood. Many neighborhood
events use the park, such as
Autumn-women (Fall women event).

About the commercial use
of stores in the area, many different
ones have come and gone - the
first Legal Seafoods, a bookstore,
liquor shop, sundries, laundries,
small appliances, drug store, etc.
I assume the commercial uses

will come & go.

I bike, walk, and drive
in this area and am eager for
safe travel. But the city's
solution to remove large
trees is terrible, costly, and
unnecessary.

A couple of decades ago, the interior
of Vellucci Park was redone and a few
trees removed. The stone bordered
playsets with benches were put in.
I'm not sure these "improvements"
provide useful features.

Our Shuman Square neighborhood
has almost no open park space,
except for Vellucci Park.

With the right turn lane already
existing, why can't the pedestrian
island be taken from another traffic
lane — which wouldn't require
taking 4 of the 6 trees in V. Park.

Shuman Sq. needs the open
space of Vellucci Park for its
physical & mental health.

Statement of John Pitkin, 18 Fayette St., Cambridge
Regarding removal of shade trees in Vellucci Plaza
Prepared for Tree Hearing, April 10, 2018

Please read Attachment A, "Trees Are Our Valuable Allies," an opinion column I wrote in the Cambridge Chronicle, Mar. 1, 2018, as part of my statement concerning trees in Cambridge as a whole. Here I want to point out why the broader issues and concerns directly matter for the honey locusts and other trees in Vellucci Plaza. *And why I object to their proposed removal.*

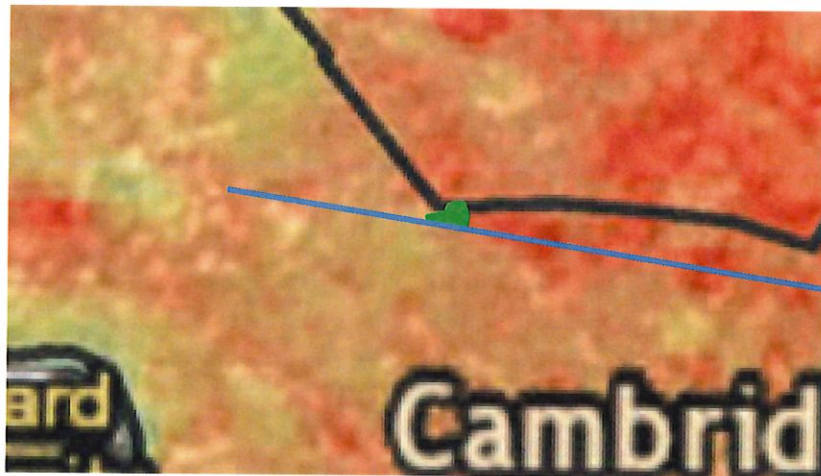
1. Since 2014, the end of the latest city-wide LiDAR study, the Inman Square neighborhood has lost mature trees at an alarming rate.

Five of the largest street trees on my street alone have been removed.

Just last month, a massive maple tree just outside Inman Square on Cambridge street keeled over in a nor'easter. (See photo)



2. Vellucci Plaza and Inman Square are already at the edge of an urban heat island that extends east along Cambridge Street.



Cambridge Street

This map of surface temperatures on July 3, 2015 shows a hot spot (dark red) centered around intersection of Cambridge & Prospect Streets ending at Vellucci Park (green triangle).

3. Heat is a serious and rapidly growing threat to public health due to climate change.

“Heat stress on human health is very likely to become much more severe. By 2030, annual days over 90 degrees Fahrenheit (90°F) may triple. By 2070, Cambridge may experience nearly three months over 90°F, compared with less than two weeks in present day. The heat index, which represents the “feels like” temperature for people, will also increase and exacerbate the likelihood of heat stress.” --Key finding in Cambridge’s Climate Change Vulnerability Assessment, Nov. 2015.

“Heart Attacks Often Follow Heat Spikes – Findings presented at the American College of Cardiology say there are significant increases in heart attacks following dramatic changes in outdoor temperature. [Eureka Alert, 3/1/18]” --April 2018 Cambridge Climate Protection Action Committee Bulletin, email from John Bolduc

4. Summer heat is a threat to *my* health.

My wife and I both experience cardiovascular stress during summer heat already to the point that we have to limit our activities. We are both relatively fit, and many others in our age cohort near Inman Square may have similar problems.

5. Trees mitigate summer heat and heat islands.

“Trees and vegetation lower surface and air temperatures by providing shade and through evapotranspiration. Shaded surfaces, for example, may be 20–45°F (11–25°C) cooler than the peak temperatures of unshaded materials.¹ Evapotranspiration, alone or in combination with shading, can help reduce peak summer temperatures by 2–9°F (1–5°C).” – Source: <https://www.epa.gov/heat-islands/using-trees-and-vegetation-reduce-heat-islands>

6. But trees are also vulnerable to heat and other environmental stresses just as we are.

Please see Attachment B on this point.

7. But, unlike humans, large, old trees grow faster than younger and smaller trees!

“Analysis of 403 tree species shows that “for most species mass growth rate increases continuously with tree size.” –Source: N.L. Stephenson, et.al., 2014. “Rate of tree carbon accumulation increases continuously with tree size” *Nature* 507, 90–93 (06 March 2014)

COLUMN

Trees are our valuable allies

By John Pitkin

Last year, the city of Cambridge reported that our city's tree canopy shrank by 6.7 percent between 2009 and 2014. This finding was based on an analysis of aerial surveys by researchers at the University of Vermont and documented in a report. This loss of tree canopy is alarming and should be of concern to everyone who lives in Cambridge or hopes to in the future.

Cambridge's green canopy is created by an urban forest of tens of thousands of trees growing along streets, in public parks and reservations, in private yards and on university and school campuses; and it spreads over roughly 30 percent of the total land area.

Cambridge has earned Tree City USA awards for 23 years running. Yet in spite of its efforts to maintain and care for trees, there was a net loss of about a hundred acres of tree cover over the five years of the study.

Trees die for reasons as varied

as people do. Some die of the infirmities of advanced age, diseases, drought and other more or less natural causes. Others die from the effects of toxins such as salt and methane leaks, pavement and dehydration, accidental and intentional injuries, poor care and simply being cut down for one reason or another, the result of human actions. There seems to be no single cause for the decline, but in short it is a challenge for trees to survive in urban conditions.

And the loss of trees almost certainly did not end in 2014, the date of the city's most recent aerial LiDAR survey. It is obvious that the dry summers since 2014 have been hard on trees at all stages of growth, in Cambridge and across the region. There are strong indications that the impacts of climate change will continue to be hard on local trees.

According to Cambridge's landmark 2015 Climate Change Vulnerability Assessment, the annual number of 90 degree-plus days here is "very likely" to triple by the end of the next

decade. The assessment identifies increased heat as one of the two most significant near-term impacts of climate change. Heat stress on human health will become "much more severe."

Increasing heat also imperils trees, with the greatest impacts on certain species including types of maples, lindens and pines. If trees can survive and continue to grow, they can help us cope and live with a warming climate in the decades ahead. It is no exaggeration that trees are fundamental to our wellbeing. They improve water and air quality, reduce flooding, cool air and pavement and save energy needed to cool buildings. They contribute to better health, higher property values, habitat for birds and natural beauty.

We are just one of many species that depend on trees. Trees themselves depend on other trees. They rely on each other to create the micro-climate, and other conditions they need to thrive. The loss of canopy itself worsens conditions for the

See PITKIN, A11

surviving trees and raises the specter of a vicious cycle of worsening conditions and smaller, more spindly trees leading to a tree desert.

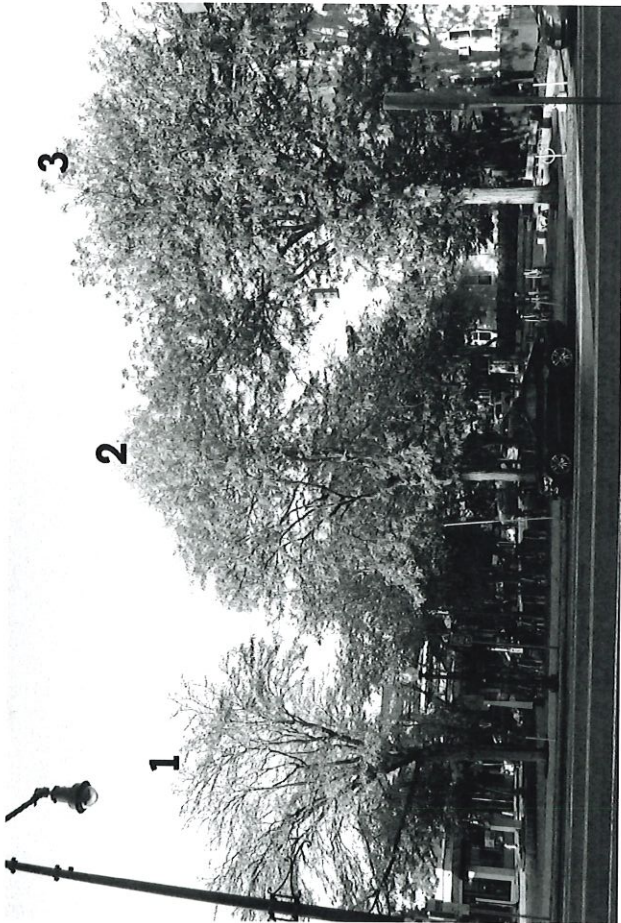
While this bleak scenario may seem far-fetched, it bears remembering that vast areas of the earth once covered by large forests have lost them, including the Mediterranean basin, most of the Middle East and the islands of Cyprus, Madeira and Iceland.

The simple truth is that trees are our silent allies in confronting a changing climate and that we need them every bit as much as they need us.

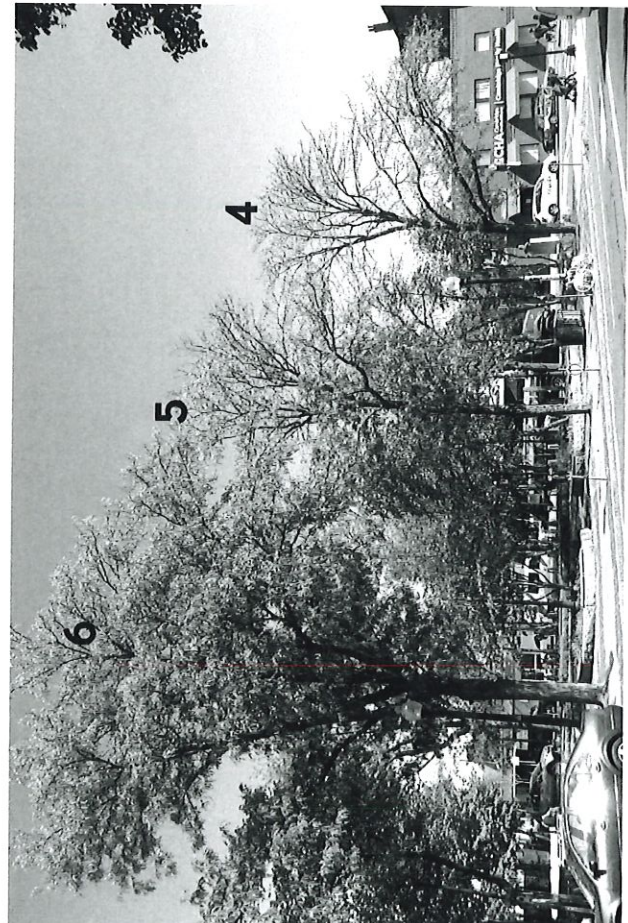
Preserving and maintaining healthy trees in neighborhoods across our city is worth every effort. Trees can fend for themselves very well in natural forests. But in the urban landscapes we have created, we can no longer take them for granted. They need help from us. The sustained loss of tree cover in Cambridge is a signal that they urgently need more.

We need to plant more, take better care of them and stop cutting them down simply for someone's convenience or our own. They are too valuable.

John Pitkin lives on Fayette Street and is an organizer of the Residents, Neighbors and Friends of Innan Square and chair of the Greater Boston Group of the Sierra Club.



honey locust Trees - Hampshire street



honey locust Trees - Cambridge street

Six honey locust trees were planted 40 years ago in Inman Square's Mayor Alfred Vellucci Plaza, along Hampshire and Cambridge Streets. They show us how greatly trees mitigate urban heat, how sensitive they are to heat, and how they depend on each other.

Inman Square and Vellucci Plaza are situated at the end of a string of heat islands dotted along Cambridge Street toward Lechmere Square to the east.

Tree 1 (in the top left photo) is directly exposed to warmer air from the east and is the smallest of the three trees on Hampshire Street. It cools and humidifies the air that reaches Tree 2. Tree 3, in turn, receives air that is conditioned by both Trees 1 and 2. It is by far the largest of the three, with a diameter of 20.5 inches, compared with 14.3" and 16.1" for Trees 1 and 2.

Trees 4, 5 and 6 on the Cambridge Street side of Vellucci plaza show the same effects and relationships. Tree 4 directly faces the warmer air to the east and is the smallest of the three.

Humans also benefit greatly from these humidifying and cooling effects, as well as the shade and beauty that the trees provide.

These images show the effects of trees working together to create the environment that they need. Numerous members of the neighborhood have expressed their concern over the loss of these trees. Their words and this scientific evidence of the trees' importance should be fully considered before making drastic changes to the Square's environment.

Members of the Inman Square Climate Action Team are working to preserve the Honey locust trees in Vellucci Plaza when Inman Square is rebuilt. To help this campaign, please email:
inmanclimateaction@gmail.com

Inman Square, 4 honeylocust replacement calculations

From: Elena Saporta <esla@earthlink.net>
To: David Lefcourt , dwebster@cambridgema.gov
Subject: Inman Square, 4 honeylocust replacement calculations
Date: Apr 10, 2018 3:28 PM
Attachments: [TreeCalculations_InmanSquare.png](#)

Dear David and David,

I am writing to express my concern for the public shade trees of Inman Square. The hearing today is about the four easternmost trees of Vellucci Plaza, however there are a number of other mature shade trees in the square facing an uncertain future.

This letter exclusively addresses the four honey locust trees that are the subject of the hearing. The diameters at breast height (DBH's) of for these 4 trees are: 13.2", 14.7", 14.3" and 16.1".

To calculate the true replacement value of these four trees, the target number is their combined biomass. An approximate estimate of the trunk volumes is derived by calculating the area of the trunks ($A = \pi r^2$) then multiplying the area by the height of the tree, ca. 35 feet, to come up with trunk volume ($V = \pi r^2 h$). Please note that total branch, root and foliage volumes have not yet been factored into the equation. Attached is a tree calculation spread sheet that addresses trunk areas and trunk volumes.

The combined trunk volumes for the four honey locusts is 281,716 cubic inches. The replacement trees for the project average 4" in caliper. The trunk volume of a 4" caliper tree is approximately 2,563 cubic inches. If we divide the total existing trunk volume i.e. 281,716 cu.in. by 2,563 cu. in., the number of 4" caliper trees needed to replace the four honey locusts is 109 trees.

The four honey locusts in question are well over 40 years old. They continue to provide numerous environmental and emotional benefits. We can use and easily dispose of these trees, replacing them, on the other hand, presents a daunting challenge.

Thank you for your attention to this matter.

Sincerely,

Elena

[Elena Saporta, ASLA, RLA, LEED AP](#)

Tree Calculations

Tree Calculations

4 Honey locusts:

DBH (")	Height (")	Area (sq. ")	Volume (cu. ")
13.2	420	136.847776	57476.06592
14.7	420	169.7166891	71281.00943
14.3	420	160.6060704	67454.54958
16.1	420	203.5830579	85504.88433

0
0
0
0

0	0
0	0
670.7535935	281716.5093

Total

Caliper (")

1.5	120	1.767145868	212.0575041
3	168	7.068583471	1187.522023
4	204	12.56637061	2563.539605
6	216	28.27433388	6107.256119

0
0
0
0
0
0
0
0

To replace the existing 4 trees, divide 281,716 by volume of new trees to determine the # of replacement trees needed:

1329	1.5" caliper trees
237	3" caliper trees
109	4" caliper trees
46	6" caliper trees

Tree Calculations

Tree Calculations

4 Honey locusts:

DBH (")	Height (")	Area (sq. ")	Volume (cu. ")
13.2	420	136.847776	57476.06592
14.7	420	169.7166891	71281.00943
14.3	420	160.6060704	67454.54958
16.1	420	203.5830579	85504.88433

0
0
0
0

0
0

281716.5093

Total

Caliper (")

1.5	120	1.767145868	212.0575041
3	168	7.068583471	1187.522023
4	204	12.56637061	2563.539605
6	216	28.27433388	6107.256119

0
0
0
0
0
0
0
0

To replace the existing 4 trees, divide **281,716** by volume of new trees to determine the # of replacement trees needed:

1329	1.5" caliper trees
237	3" caliper trees
109	4" caliper trees
46	6" caliper trees

Statement of Jeanne Garrison
71 Inmanmont St.

Although I fully support the continuing effort to maintain the tree canopy throughout Cambridge, and am a big "tree fan,"

I also fully support the removal of these trees, the subject of the hearing.

As an Inman resident, I am constantly made aware of the dangers inherent in the current traffic pattern.

Safety, in this case must take precedence over the existing trees. Trees can easily be replaced, human lives not so easily.

Great thought, planning, and public input ~~has~~ have already gone into the renovations. In 20 years, trees will have grown. Sentiment should not preserve them at the expense of safety for all.

Jeanne Garrison

Tree Hearing

4/10/18

Sign In

Steve Dardarian XHB, /no.

BRYAN WMSH VHB

ED WOLL 79 RANA ST. CAMBRIDGE

T.B. CASEY 18 Ellsworth Park.

Laurin Stoler Inman St.

Susan Markowitz 20 Oak St

Denise Heintze mid-camb

Florie Westcott 33 Market St.
infinw2@yahoo.com

SHALLAN FITZGERALD PMA CONSULTANTS

Steve Wineman 36 McTernan St

Sharon deVos

Elena SAPORTA

John Pitkin 18 Fayette St.

Daniel Lewertz Beacon St.

Stephen Gillies 1221 Cambridge St
gillies.stephen@gmail.com

Nad Fillman B Mac-celly

Tree Hearing

4/10/18

Sign In

Richard Kruednic 20 Oak St. rkruehnic@gmail.com
Nancy Messom 166 Hampshire St 617-847-9018
SUSAN RINBLER 82 KIMMARD ST. sringl23@hotmail.com
Catherine LeBlanc 14 Tufts St #3 zenith29@hotmail.com
Sara Mae Berman 23 Fayette St. saramaeb@verizon.net
Catherine S. Alexander 4 Crawford St #3 Draftcreature@smail.com
Jeanne Garrison 71 Tremont St.
CHARLES TEAGUE 23 EDWARDS ST CHARLES.D.TEAGUE@gmail.com
Phyllis Bretholz 65 Antoin St. pbretkoltz@gmail.com
Geena Lucibello 114 Line St geenalucibello@gmail.com
John Potbrier 114 Line St john.potbrier@outlook.com
Andrew Hovey 112 Windsor Rd, Medford hovey.andrew@gmail.com

TALBOT ST



PUBLIC TREE HEARING - APRIL 10, 2018

PUBLIC COMMENT SIGN-UP

PLEASE PRINT NAME

1.	16.
2.	17.
3.	18.
4.	19.
5.	20.
6.	21.
7.	22.
8.	23.
9.	24.
10.	25.
11.	26.
12.	27.
13.	28.
14.	29.
15.	30.

VELLUCCI PLAZA

PUBLIC TREE HEARING - APRIL 10, 2018

PUBLIC COMMENT SIGN-UP



PLEASE PRINT NAME	
✓ 1. Richard Krushnic	✓ 16. Phyllis Bretholz
✓ 2. SUSAN RINGLER	17.
✓ 3. Catharine LeBlanc	18.
✓ 4. JEANNE GARRISON	19.
✓ 5. Sara Mae Berman	20.
6.	21.
✓ 7. Nancy Messom	22.
- 8. John Pothier	23.
- 9. Beena Lucibello	24.
✓ 10. Elena SAPORTA	25.
✓ 11. Sharon deVos	26.
✓ 12. Florio Meseroff	27.
✓ 13. John Pithin	28.
✓ 14. Andrew Hovey	29.
✓ 15. Susan Markowitz	30.



PUBLIC TREE HEARING - APRIL 10, 2018

PUBLIC COMMENT SIGN-UP

	PLEASE PRINT NAME	
✓ 1.	Daniel Gewertz	16.
✓ 2.	Laurin Stoler	17.
✓ 3.	Steve Winemar	18.
✓ 4.	CHARLIE TEAGUE	19.
5.		20.
6.		21.
7.		22.
8.		23.
9.		24.
10.		25.
11.		26.
12.		27.
13.		28.
14.		29.
15.		30.