

Port Infrastructure Project VIRTUAL OPEN HOUSE

Thursday, March 30, 2023 | 6-8 p.m.



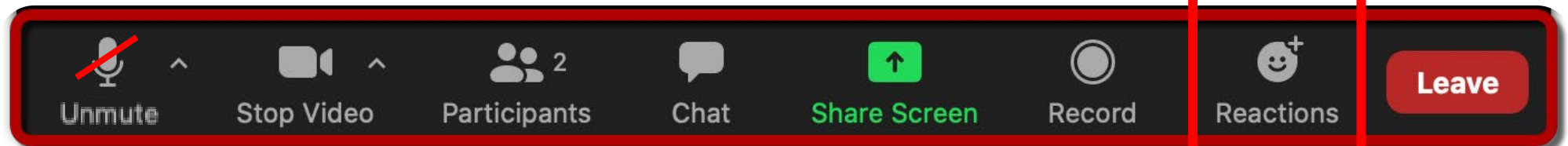
CAMBRIDGE
DEPARTMENT
OF PUBLIC
**THE
WORKS**

Welcome!

Remote Participation Instructions

- **Please mute your mic** unless you are called on
- Feel free to use the chat to ask questions, make comments, or ask for help at any time
- We will take questions and comments from the chat and from participants with raised hands

Raise hand button in "Reactions"

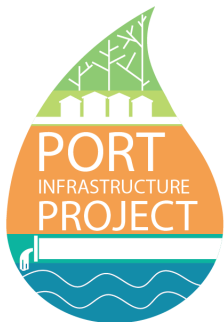


March 30, 2023 | 10:00 a.m.

CAMBRIDGE
DEPARTMENT
OF PUBLIC
**THE
WORKS**

Meeting Goals

- Share and discuss **design ideas** and **options** for **Clement Morgan Park** and **Paolillo Tot Lot**
- Review and discuss **shared streets concepts** and gather street-specific feedback in small groups



Project Team

City of Cambridge

- **Jerry Friedman**
Project Manager/Supervising Engineer
- **Kristen Kelleher**
Community Relations Manager
- **Kevin Beuttell**
Supervising Landscape Architect
- **Gary Chan**
Neighborhood Planner
- **Lev McCarthy**
Neighborhood Planner
- **Matt Nelson**
Assistant to the City Manager
- **Lillian Hsu**, Director of Public Art
- **Hilary Zelson**, Public Art Administrator

Consultant Team

- **Kleinfelder, Inc.**
Project Lead, Engineering
- **Consensus Building Institute (CBI)**
Facilitation and Community Engagement
- **Stantec**
Landscape Architecture

March 30, 2023 | 6-8 p.m.



Agenda


- 6 PM Welcome & Introductions
- 6:10 Port Project Progress Update
- 6:15 Clement Morgan Park & Tot Lot Design Ideas
- 7:00 Shared Streets Concepts
- 7:20 Small Group Discussions on Each Street
- 7:50 Report Out and Next Steps
- 8 PM Adjourn

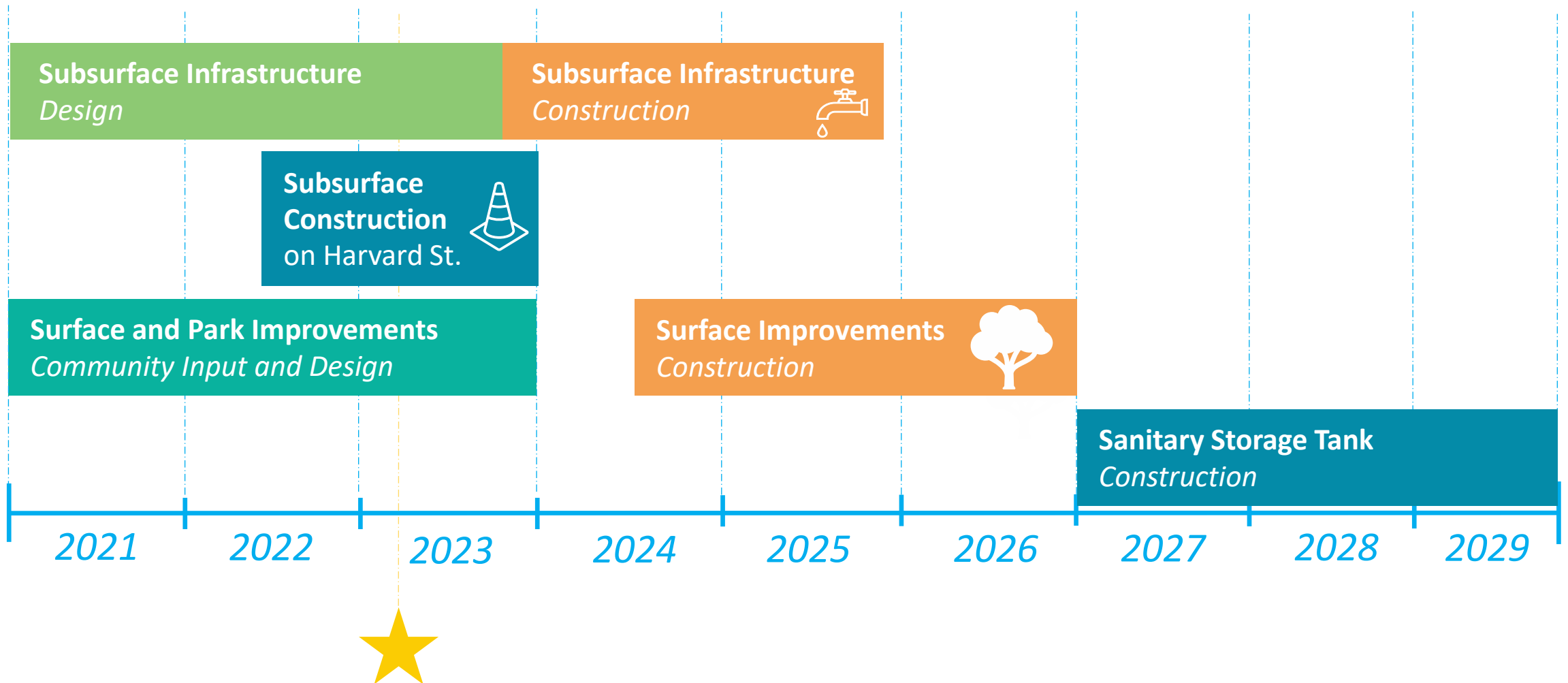
Progress Update



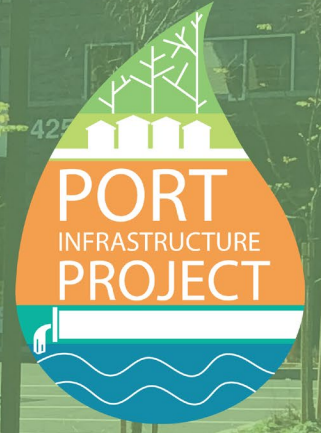
CAMBRIDGE
DEPARTMENT
OF PUBLIC
**THE
WORKS**

Phase 2 sequence of work

 = We are here!



Clement Morgan Park and Paolillo Tot Lot



CAMBRIDGE
DEPARTMENT
OF PUBLIC
**THE
WORKS**

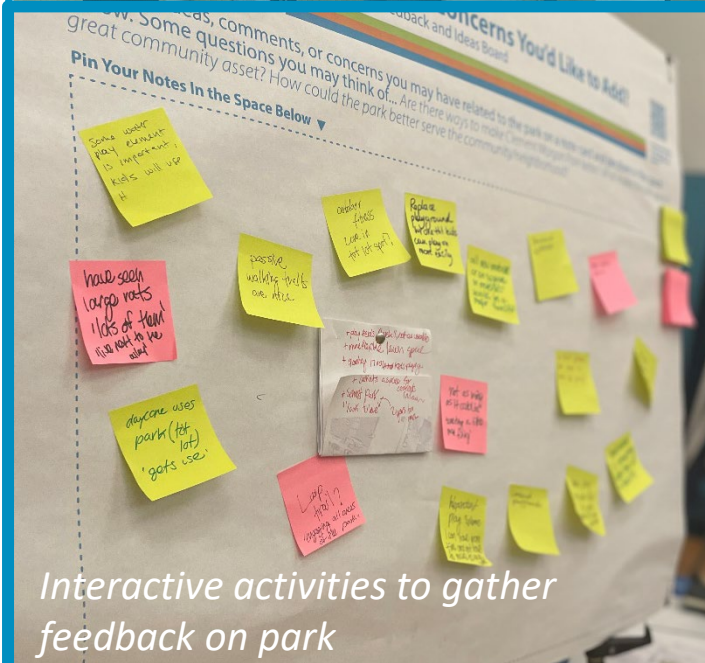


Goals for tonight's Park discussion

- Share what we've heard so far about the Park and improvements already being considered
- Hear from you how you'd like to prioritize space in the Park
- Brainstorm options for how the space could work best for everyone who uses it
 - Discuss ideas for current priority areas in the Park, including kids play areas, flexible open spaces, and the basketball courts
- Explain next steps and other ways to share your ideas

Feedback we've heard so far

Public Workshop – October 2022



Interactive activities to gather feedback on park



We heard residents value the Park for lots of reasons

Play/Family Activities

- Playground Structures
- Water Play
- Markets and Social Events

Sports and Physical Activity

- Outdoor Fitness (exercise equipment, yoga)
- Basketball
- Walking Paths (loop trail at perimeter of park)
- Sports Activities (basketball, frisbee, soccer, skateboarding, playing catch, table tennis)

Flexible Spaces & Community Activities

- Picnic Areas
- Flexible Seating
- Open Lawn
- Stormwater Gardens
- Moveable Seating
- Public Art
- Free Play Areas

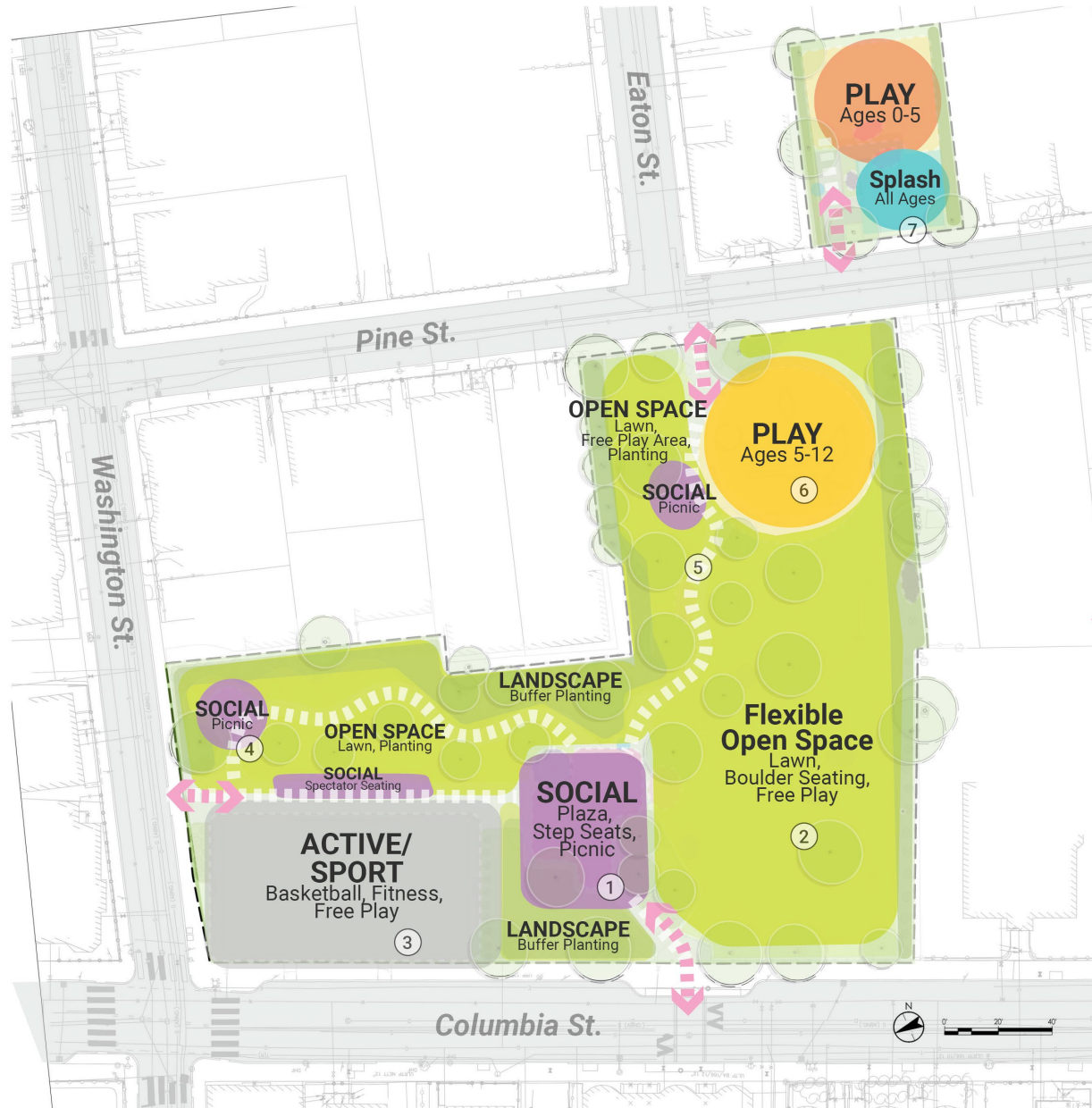


Ideas for improvements based on input we've heard so far:

- New playground equipment & surfaces
- Upgrades to pavement and pathways
- Improved stormwater drainage
- New landscaping
- Improved lighting
- New/improved site furniture
- Improved central plaza area
- Include native plantings



How the Park is Used Today



Existing Site Photos



Big Ideas to Discuss Today

We want your feedback on where to use dedicated space for specific activities vs. maintaining flexible open space

Play Areas



Court Area



Spaces For All Ages



Play Area Ideas

- Move splash pad to sunny area?
- Combine little and big kid spaces?
 - Create an opportunity for teen/adult hangout space or exercise area where the tot lot is now?

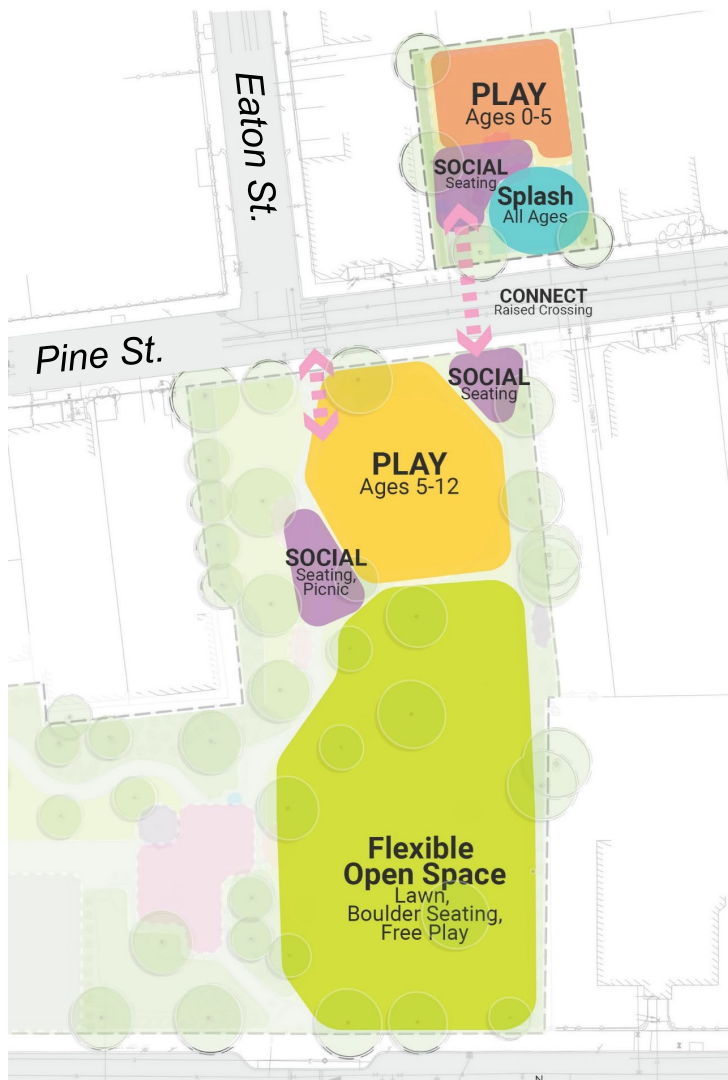
Court Area Ideas

- Expand area?
- Add shade trees?
- Create a teen-centered hang-out space connected to court?

As we discuss these, consider:

- What other ideas do you have for how to prioritize and lay out the space?
- Are you more interested in flexible use spaces or more new dedicated activity space?

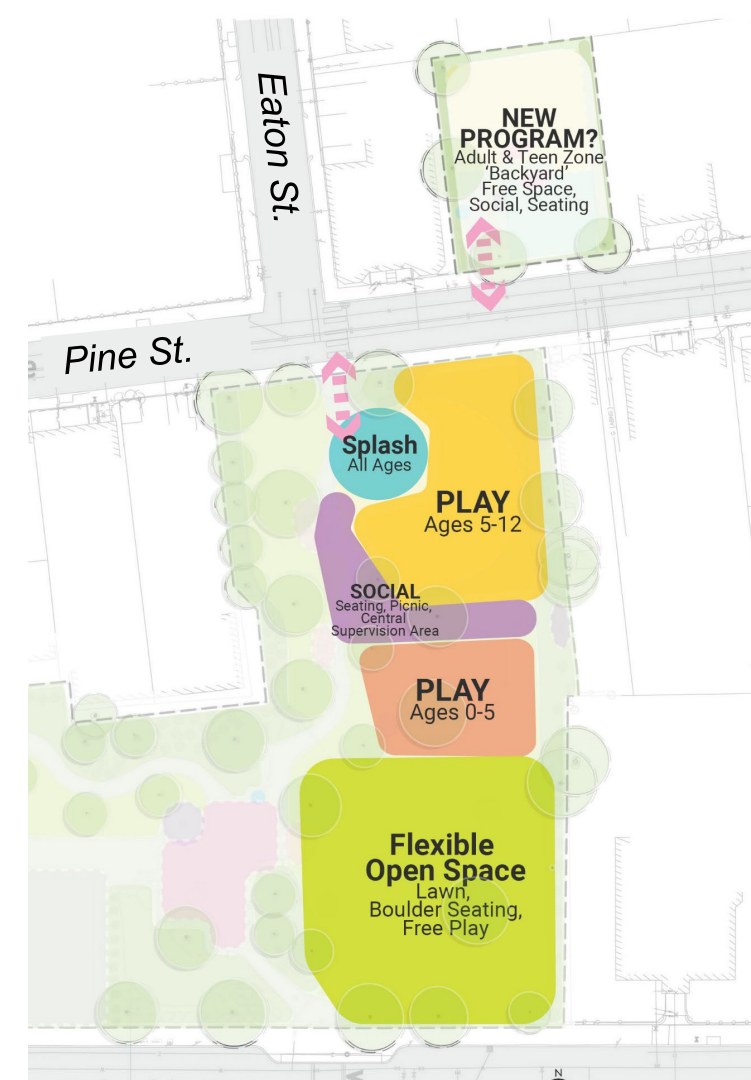
Ideas for Play Areas



#1. Keep the same layout as today



#2. Move splash pad to main park



#3. Combine little & big kids' play areas

Feedback on Play Area Ideas

Are you more interested in options to combine and possibly expand the kids' play area? Or keeping the layout as it is, with more flexible open space?

Temperature Check: Which of these should we explore?

1. Explore **moving the splash pad** from the shaded tot lot to a sunny area in the main park
2. **Combining** the little and big kid play areas
3. Explore **new uses** for the current tot lot area
4. Keep the tot lot as it is

Other ideas?

Ideas for Court Area



#1. Keep existing layout, install new surfacing & a new fence



#2. Add "runout space" around court, expand seating & social space



#3. Changes in #2 AND shift court to add new shade trees and social space along Columbia and/or Washington

Feedback on Court Area

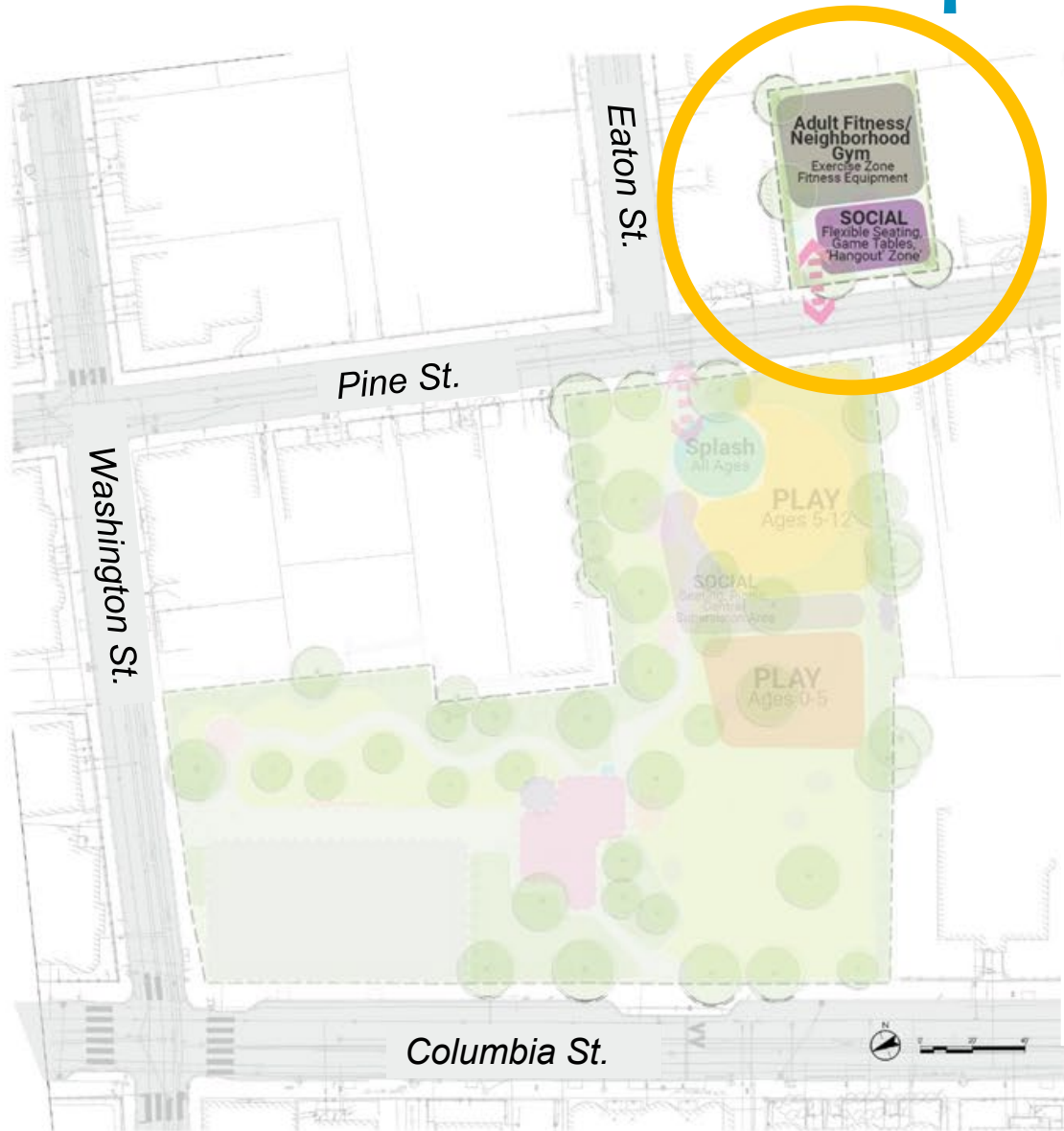
How could the court be improved to work best in the Park?

Temperature Check: Which of these should we explore?

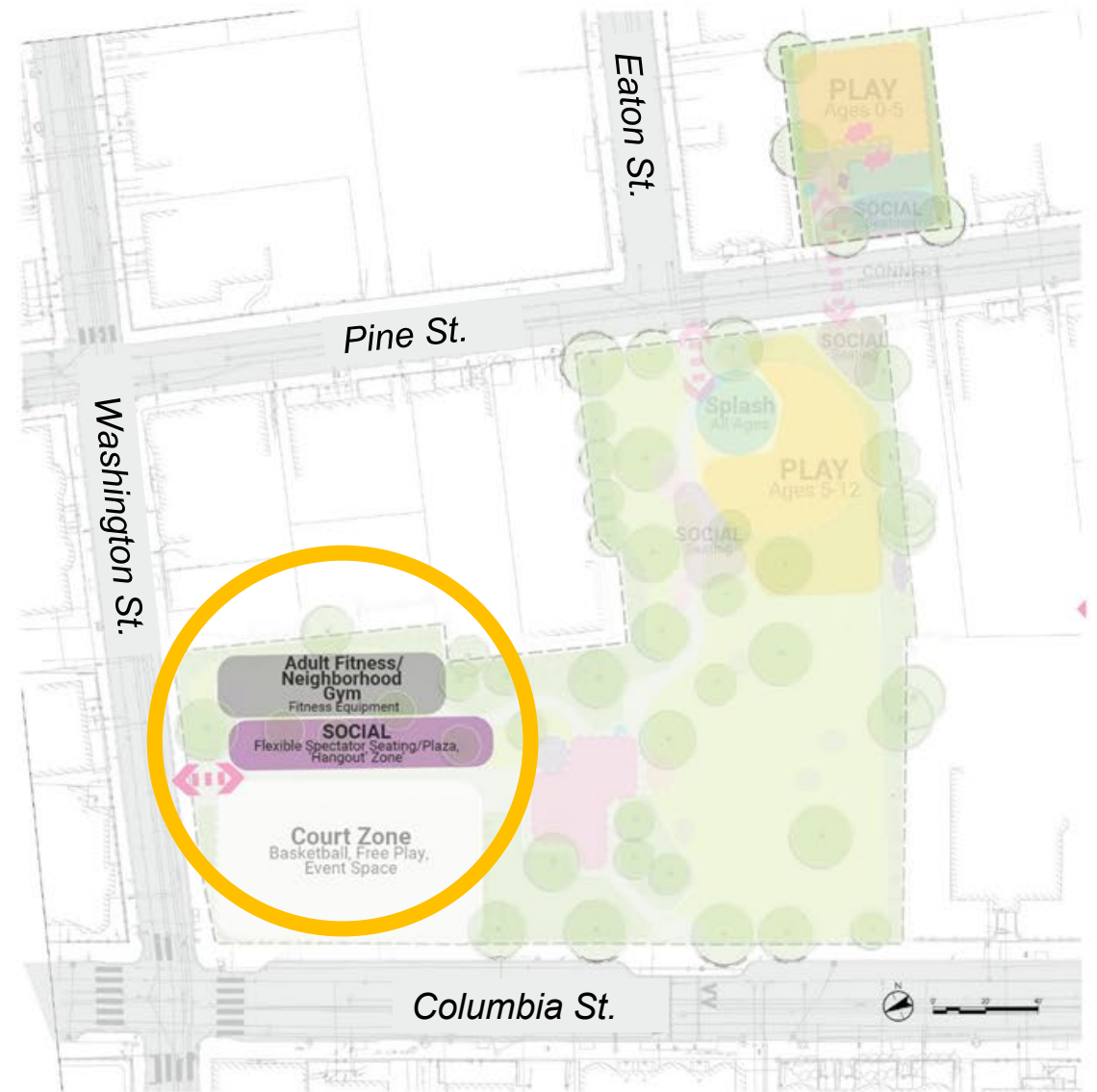
- Keeping the court and seating areas like they are today*
- Adding more "run out" space and expanding the seating/spectator area*
- Shifting the court, adding new shade trees along Columbia St. and/or Washington St.*
- Other ideas?*

What other ideas do you have for the court area space?

Ideas for Adult & Teen Spaces



Separated to 'Tot Lot' Area



Combined with Court Zone

Examples of Adult & Teen Spaces



Feedback on Adult & Teen Spaces

Are you interested in exploring creating dedicated space for adult outdoor fitness and/or teen social hangout areas?

Temperature Check

1. Should we explore...

- A new **adult outdoor fitness/gym**?
- A new **teen/community social space** in the Park?

2. If so, where should we consider putting these spaces?

- In the current tot lot*
- Next to the basketball court*
- Somewhere else*

What **other ideas** do you have for adult/teen spaces or activities?

Next Steps: Clement Morgan Park

- ❑ **Send us your feedback** on the park and tot lot via a survey – and share with your neighbors!
 - tinyurl.com/PortParkSurvey
- ❑ **Help inform your neighbors** about the project and how to get involved
- ❑ **Sign up** for occasional project emails
 - cambridgema.gov/ThePort
- ❑ **Stay tuned** for more opportunities to discuss the Park in person this spring

Shared Streets



Sidewalks & Accessibility



Wider, smoother sidewalks and pedestrian ramps

- At least 5' is most desirable
- 4' min. required at new driveways and street trees
- 3' min. allowable at existing trees

The City is committed to accessibility in all construction projects.



Suffolk Street Example: Today



Trees block accessible
pedestrian routes

Here's what a traditional accessible design looks like



- Accessible sidewalk on one side only
- Parking reduced

Here's what a Shared Street would look like



Space for more trees on both sides

Less parking reduction

Sidewalks can become green space

Pedestrians and vehicles share the low-volume, low-speed street



Benefits of a Shared Street

- Creates an **accessible route** in the roadway that is **shared by pedestrians and slow-moving vehicles**
- Removes narrow, substandard sidewalks allowing for **more green space** and opportunity to plant more trees
- Preserves **more parking** compared to a traditional, accessible street design
- Makes the neighborhood **more walkable** and **comfortable**, focusing on community in public space


We consider Shared Streets when...

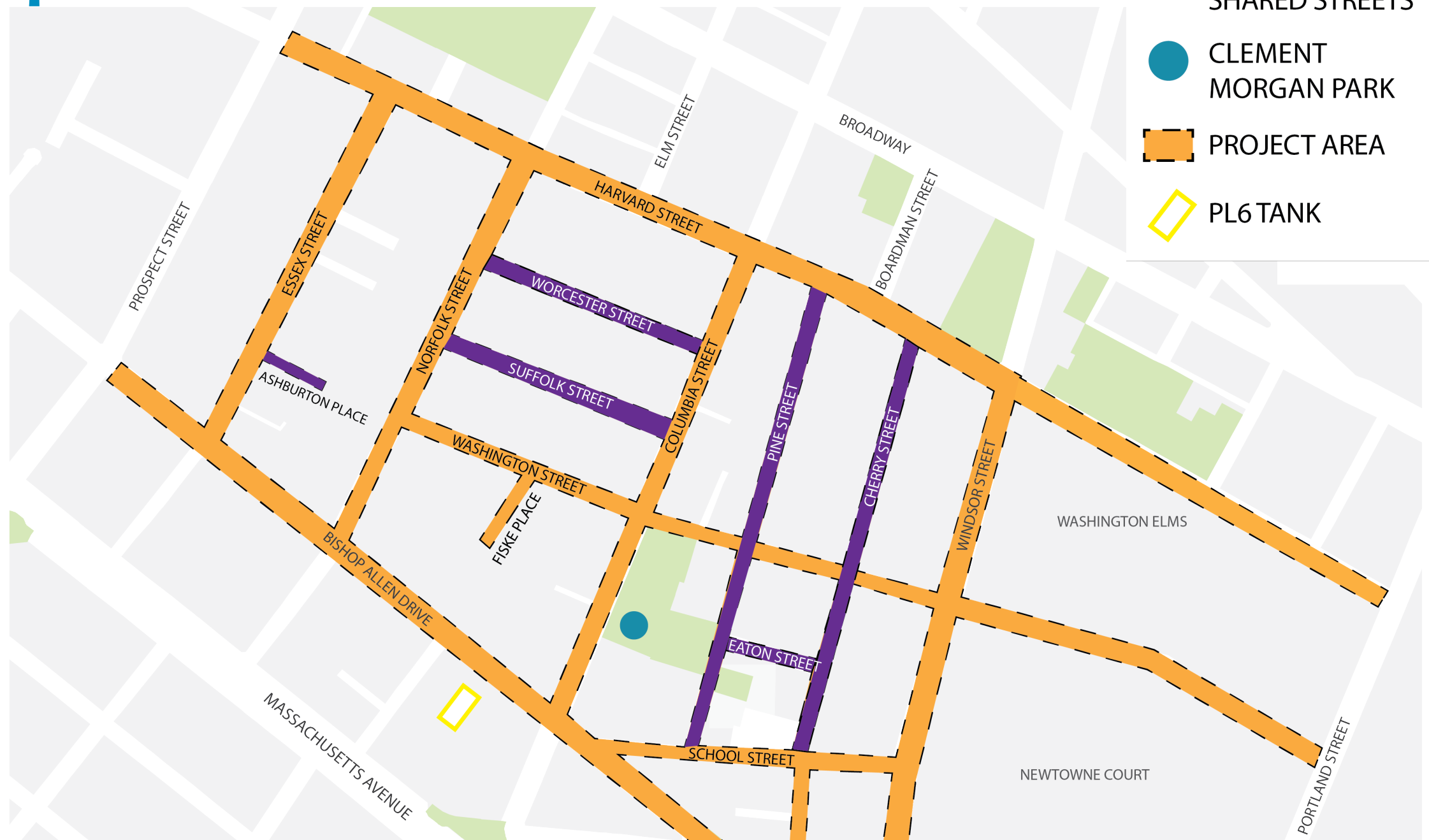
- A street has **low traffic volumes** and **low speeds**
- Existing sidewalks have **limited accessibility** and opportunities for tree plantings
- Residents are concerned about **parking impacts**



Longfellow Street, Cambridge

Proposed Shared Streets in the Port

-  PROPOSED SHARED STREETS
-  CLEMENT MORGAN PARK
-  PROJECT AREA
-  PL6 TANK





We've heard from residents about shared streets that...

"Parking is important to me"

"I want more trees to be planted"

"Sidewalks are narrow and traffic is light, so I walk in the street today anyway"

"How will drivers know this is a shared street?"

"I'm in favor of shared streets!"

"How will snow clearance work?"

"Where will I put my trash/recycling?"

"Who will maintain the new landscaped areas?"

Shared Streets – What does this mean for parking?

In comparison to a traditional, accessible street design, these shared street designs have:

Worcester Street: 25% MORE parking

Suffolk Street: 5% MORE parking

Eaton Street: Same amount of parking

Pine Street: 30% MORE parking

Cherry Street: 50% MORE parking

Messaging to People Driving



Other considerations for Shared Streets

**Raised
Crosswalks**



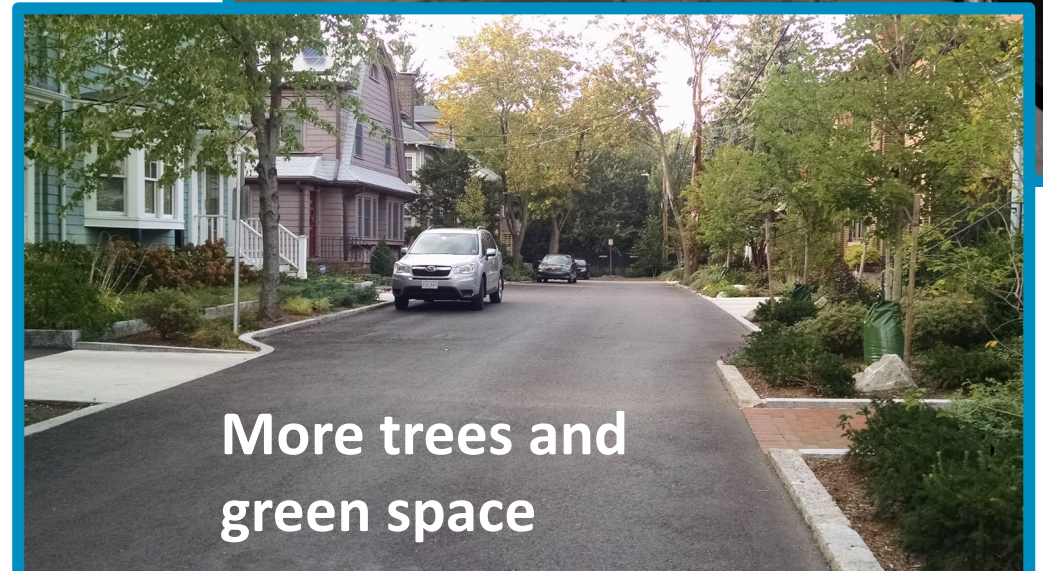
Lighting



**Hard surfaces
for garbage cans**



**More trees and
green space**

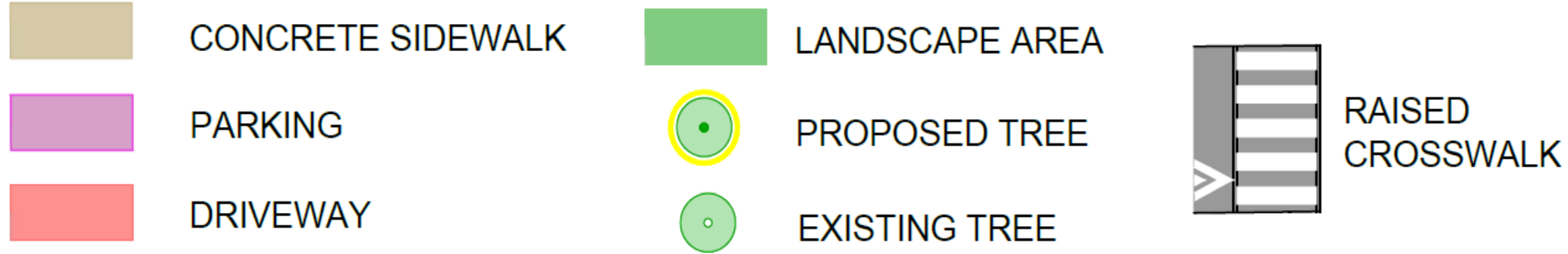


Shared Streets Summary

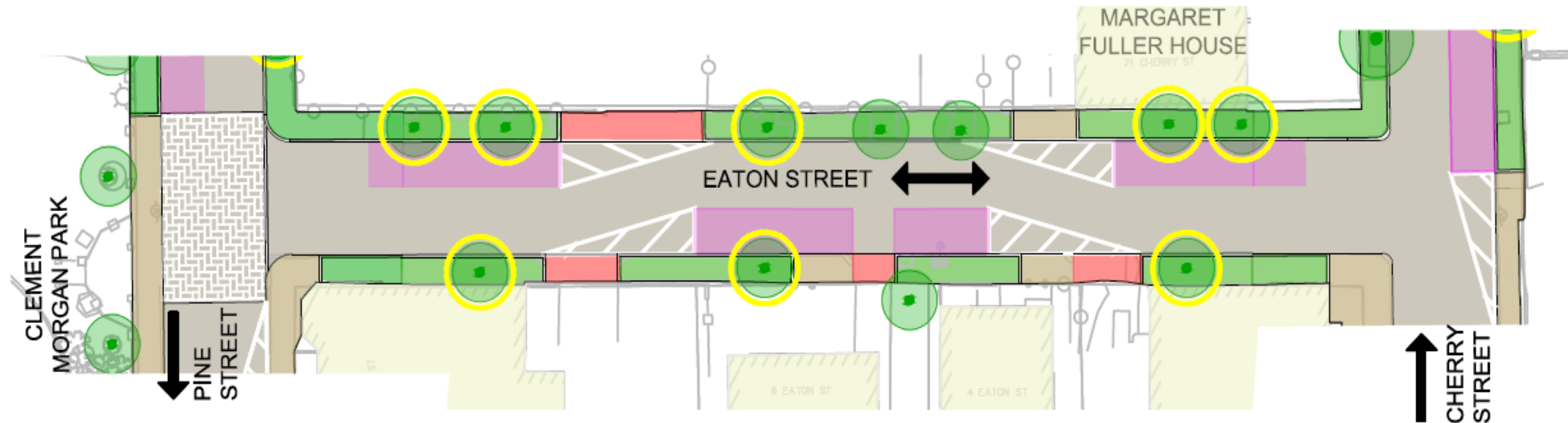
- Pedestrians, cyclists and low-speed motorists share the road; pedestrians have priority.
- **Increased accessibility** compared to streets with narrow sidewalks.
- More opportunities for **tree plantings**.
- Best option to **maximize parking retention**.



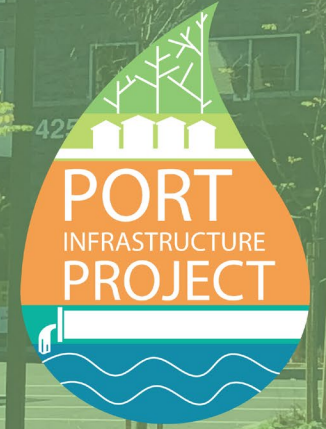
Shared Streets Design Plan Example



EATON STREET - Pine Street (left) to Cherry Street (right)



Questions about Shared Streets





Shared Streets Breakout Discussions

Room 1: Suffolk, Worcester, and Ashburton

Room 2: Pine and Eaton


Room 3: Cherry and Eaton

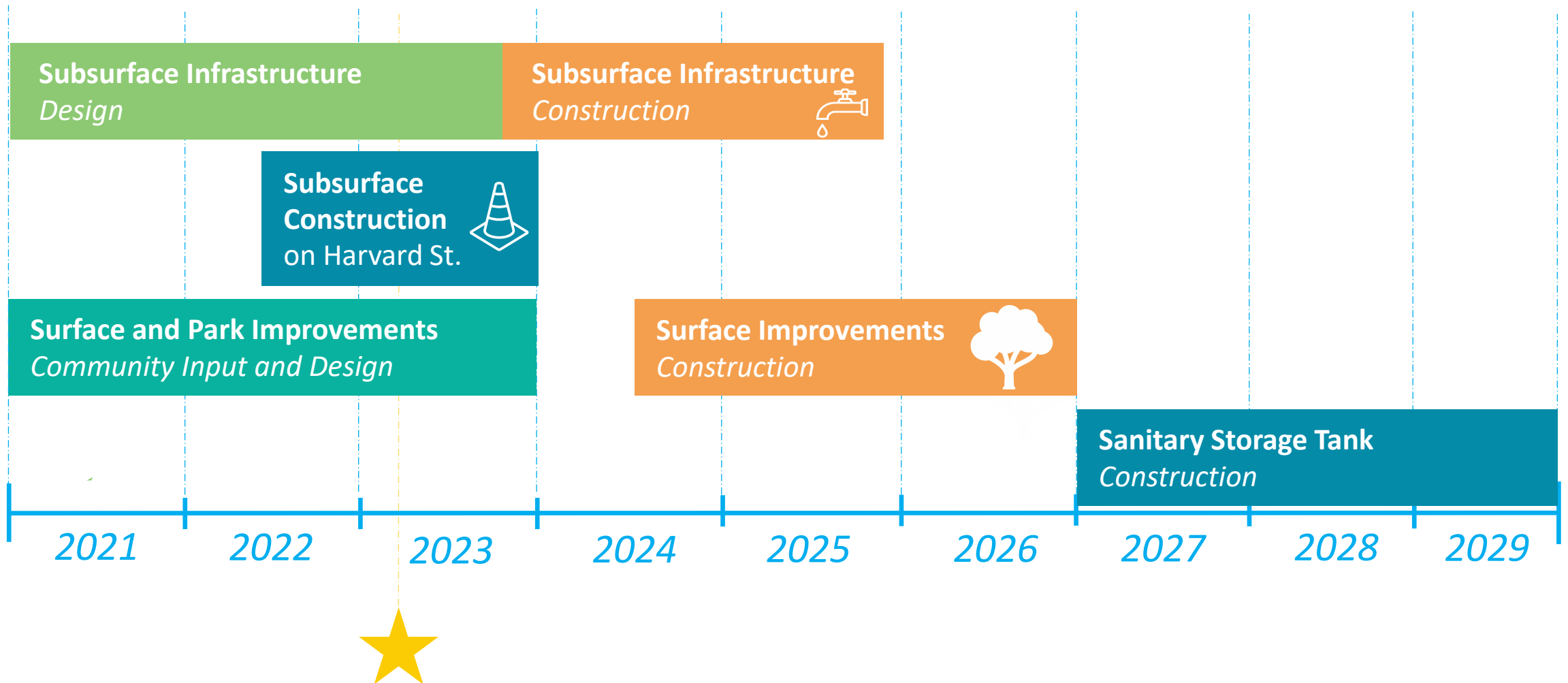
- Each breakout room will have a facilitator and project team member
- Design plans and renderings will be shown in the breakout rooms
- The design plans are also available for download on the project website (so you can view and zoom in on your own)

Next Steps: Shared Streets

- ❑ **Send us your feedback** on Shared Streets via a survey – and share with your neighbors!
 - tinyurl.com/SharedStreetsPortSurvey
- ❑ **Join us** for a street walk this Spring (*stay tuned for dates!*)
- ❑ **Help inform your neighbors** about the project and how to get involved
- ❑ **Coordinate with neighbors on your street** to schedule a conversation with the project team about the shared street designs for your street
- ❑ **Stay informed** and sign up for occasional project emails
 - cambridgema.gov/ThePort

Phase 2 Sequence of Work

 = We are here!



For more information visit:
cambridgema.gov/theport

Jerry Friedman, Supervising Engineer

jfriedman@cambridgema.gov | 617.349.9720

Kristen Kelleher, Community Relations Manager

kkelleher@cambridgema.gov | 617.349.4825

**COMMENTS &
QUESTIONS?**



Ashburton



Cherry



Eaton



Pine



Suffolk



Worcester

