

TOBIN MONTESSORI AND VASSAL LANE UPPER SCHOOL

Committee on Public Planting

06/9/ 2021

CONTENT

- 01 Existing Conditions
- 02 Existing Trees to Protect and Remain
- 03 Site Themes
- 04 Plant Palette
- 05 Plant Species by Area



**FATHER
CALLANAN
PARK**

**TOBIN MONTESSORI
VASSAL LANE UPPER
SCHOOL**

EXISTING CONDITIONS



1



2



3



4

Tree Types + Qty

- 1 Oak (10)
- 2 Oak (15)
- 3 Maple (4)
- 4 Maple (6)

EXISTING TREES TO PROTECT



Tree Removal Counts

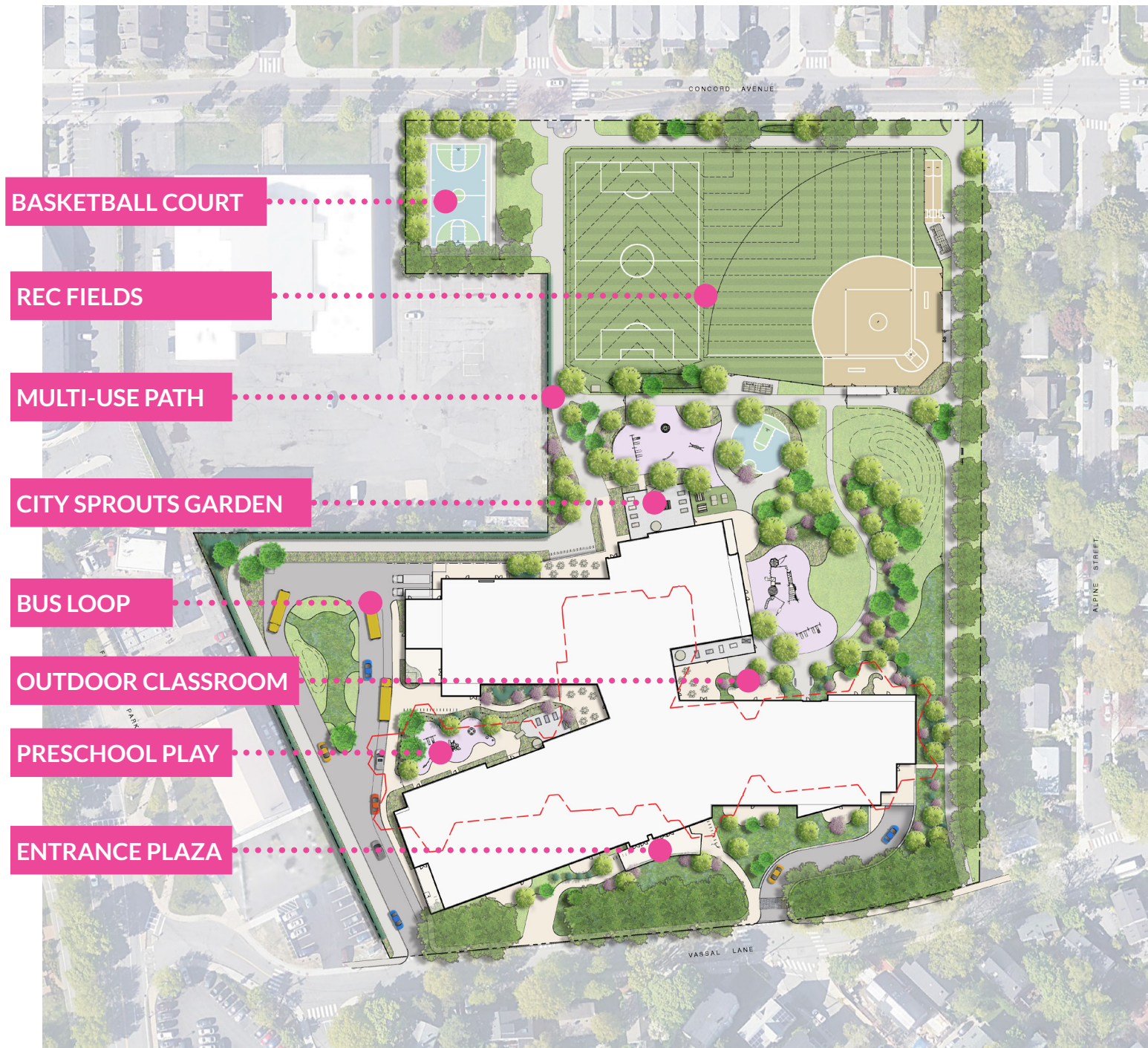
	Existing	To be Removed
<6"	52	52*
6-8"	7	7
>8"	65	32
Total	129	94 (35 to remain)

* Two 2" caliper trees along Concord Ave. as noted on plan shall be transplanted elsewhere in City under the guidance of the City Arborist

KEY

- Removed By City (*prior to construction*)
- Proposed Removal
- Proposed Protection

REMOVAL + PROTECTION



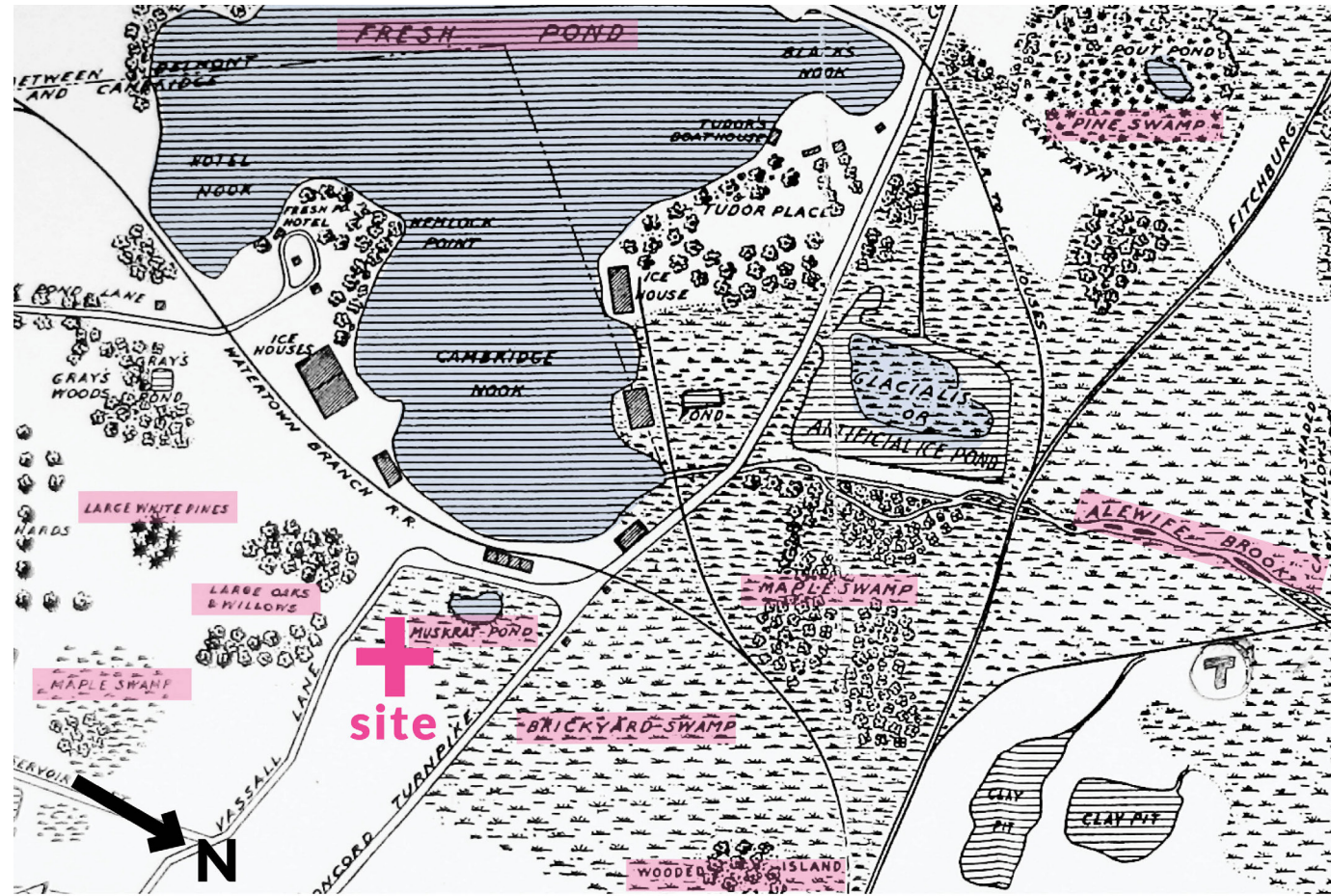
Tree Replacement Counts

EXISTING REMOVAL		REPLACEMENT REQS
Caliper (in)	Quantity	Total Caliper (in)
6*	4	24
8	3	24
10	7	70
12	16	192
15	4	60
18	3	54
20	4	80
30	1	30
Total		534

* assumes new city ordinance

534 Caliper Inches of Replacement
 = **178** (3" Caliper) Trees Required

PROPOSED SITE PLAN



RESTORE PRE-INDUSTRIAL LANDSCAPE

- heal + restore ecological conditions of site
- different plant palettes create multiple ecosystems
- support exploration and curiosity

SITE THEMES



POND
: *bioretention*



LOWLAND
: *short and messy*



HILLS
: *playful mounds*



UPLAND
: *dense trees*

The new landscape highlights landform as we restore and heal the site from it's industrial past. A variety of new plant palettes across the site will establish multiple biotopes and create opportunities for students and the community to be intimately present with their surroundings.

SITE THEMES



Acer rubrum 'Autumn Blaze'



Carpinus caroliniana



Cladrastis kentuckea



Betula nigra 'Cully'



Aesculus hippocastanum



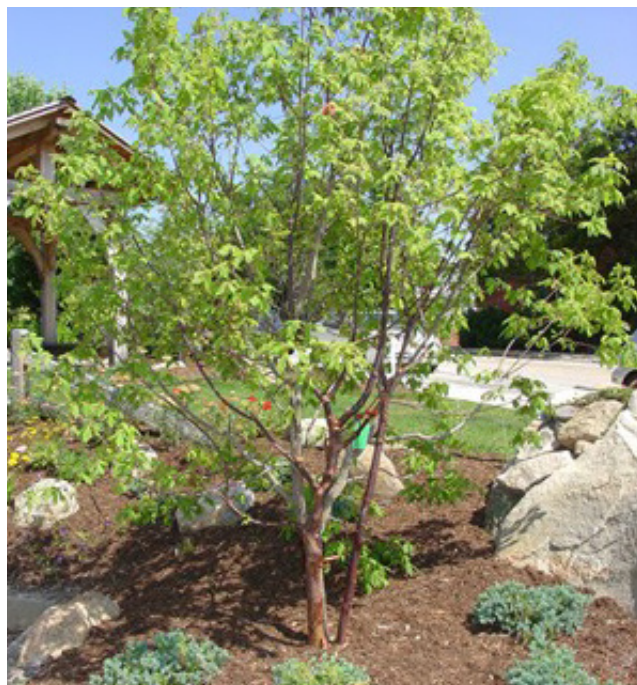
Quercus rubra

Drawing Inspiration

This palette of trees, shrubs and groundcovers draws from historical data, the Cambridge Urban Forestry Master Plan, Healty Forest-Healthy City Document, Cambridge Guide to City Trees, City Tree Planting Programs and the list of tree species planted in 2019.

The actual planting specifications and planting details will draw directly from those specifications used by the City of Cambridge.

PLANT PALETTE



Acer griseum



Amelanchier sericea



Nyssa sylvatica



Betula papyrifera



Oxydendrum arboreum



Magnolia virginiana

Other Trees

Other trees being considered for the site include:

Ulmus americana var.

Platanus x acerifolia

Celtis occidentalis

Cercis canadensis

Cornus florida var.

Juniperus virginiana var.

Koelreuteria paniculata

Quercus bicolor

Quercus imbricaria

Tilia cordata

Hamamelis virginiana

PLANT PALETTE

TRAVERSE



LOWLAND + WETLAND TREES:



Cercis canadensis
 Juniperus virginiana var.
 Betula species
 Amelanchier sericea



Nyssa sylvatica
 Acer species
 Platanus x acerifolia
 Magnolia virginiana
 Hamamelis vernalis

HILL + UPLAND TREES:



Quercus rubra
 Quercus imbricaria
 Carpinus caroliniana
 Cladrastis kentuckea



Tilia cordata
 Acer species
 Aesculus hippocastanum

PLANT SPECIES BY AREA