

Glacken Field Renovation

Water Board January 12, 2021



CAMBRIDGE
DEPARTMENT
OF PUBLIC
**THE
WORKS**

Project Overview and Schedule

Playing fields, tot-lot, site improvements, slope restoration

- Construction on-going
- Fields Playable April 30, 2021, subject to weather and COVID
- Project complete fall 2021, subject to weather and COVID

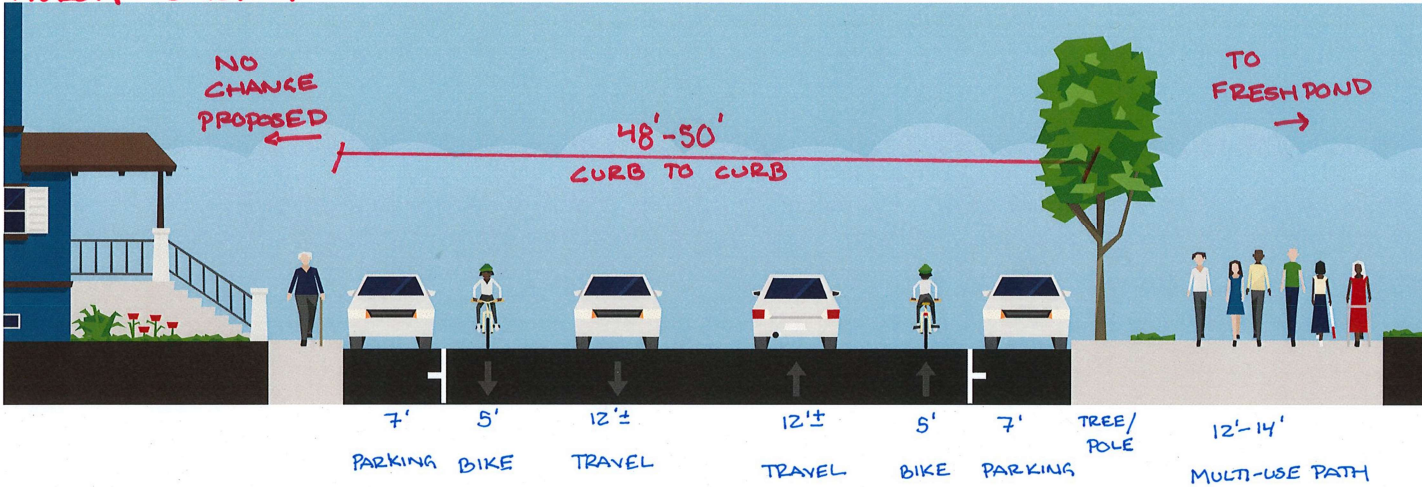
Design Focus: Safe connections for people walking and biking along Huron Avenue to access Reservation and Glacken



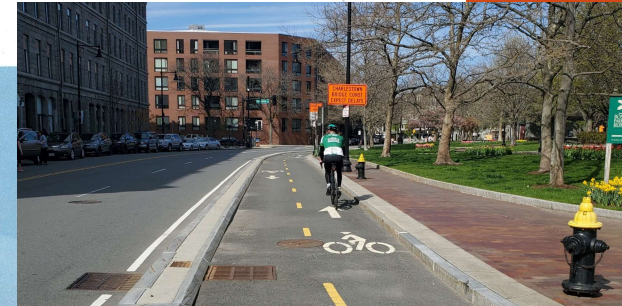
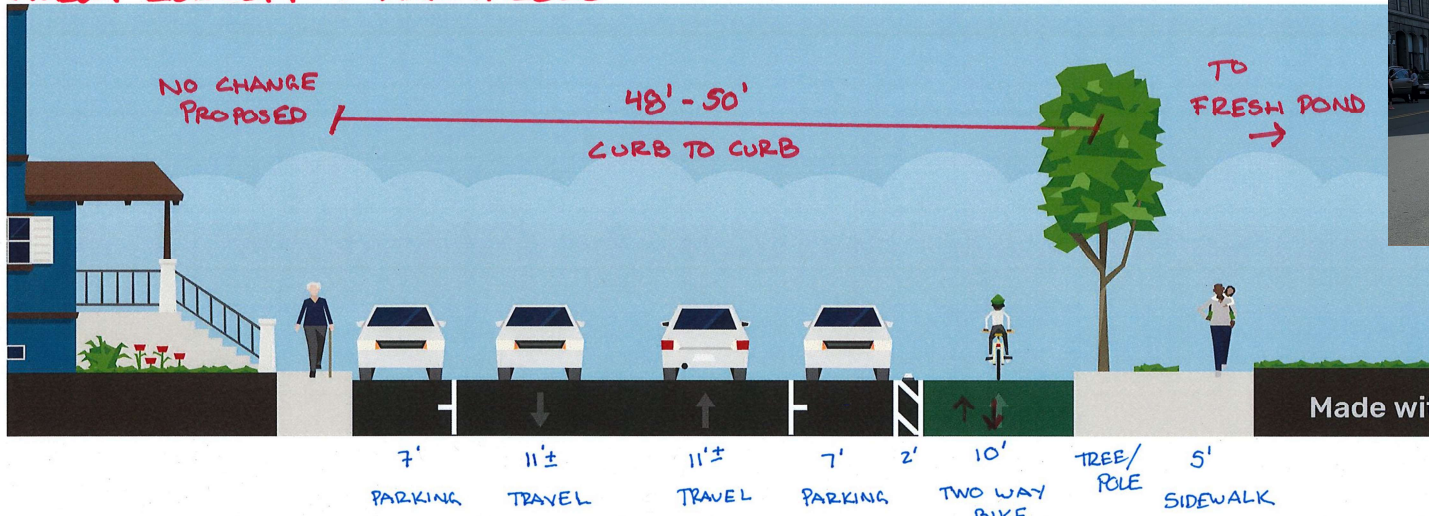




HURON CONCEPT → FEB 2020



HURON CONCEPT → MARCH 2020



Great progress – minimized impact on Reservation and identified potential offsets for increased paving.

- With design changes and accurate property line information, minimal sidewalk proposed on the Reservation (537 +/- sq ft).
- Sidewalk will be porous asphalt.
- Water Department will maintain the path for winter use with minimizing chlorides and salt.
- Identified offsets that can be implemented as part of future projects.
- Work with Water Board, Advisory Board, and staff to identify tree plantings.
- Worked hard to also minimize the loss of parking. Maintaining 85% of parking (100+/- out of 119+/- spaces).



How much of the sidewalk is location in the Reservation?

	SF in Right-of-Way	SF in Reservation	% on Reservation
Assuming all of it on Reservation		7000	100%



How much of the sidewalk is location in the Reservation?

	SF in Right-of-Way	SF in Reservation	% on Reservation
Assuming all of it on Reservation		7000	100%
Using GIS	4442	2512	36%



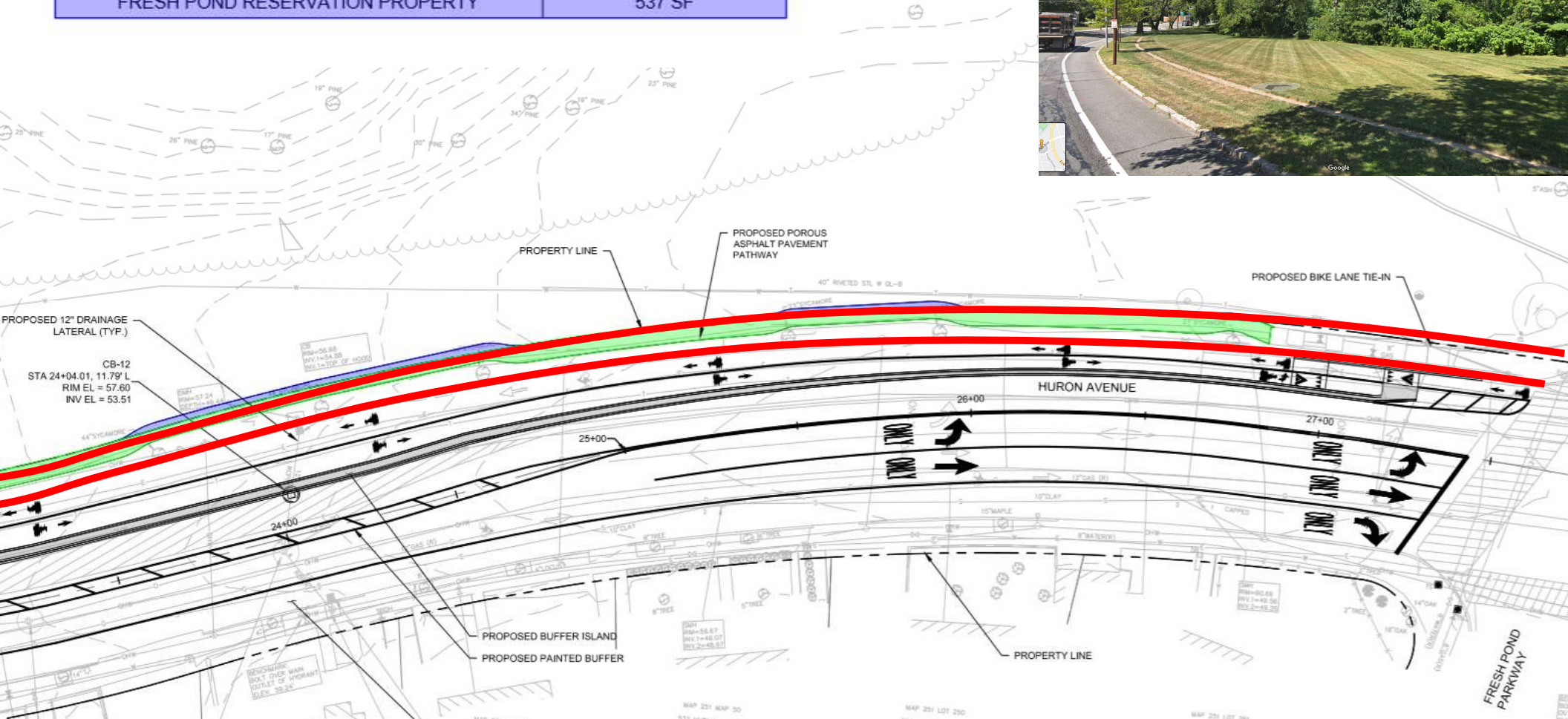
How much of the sidewalk is location in the Reservation?

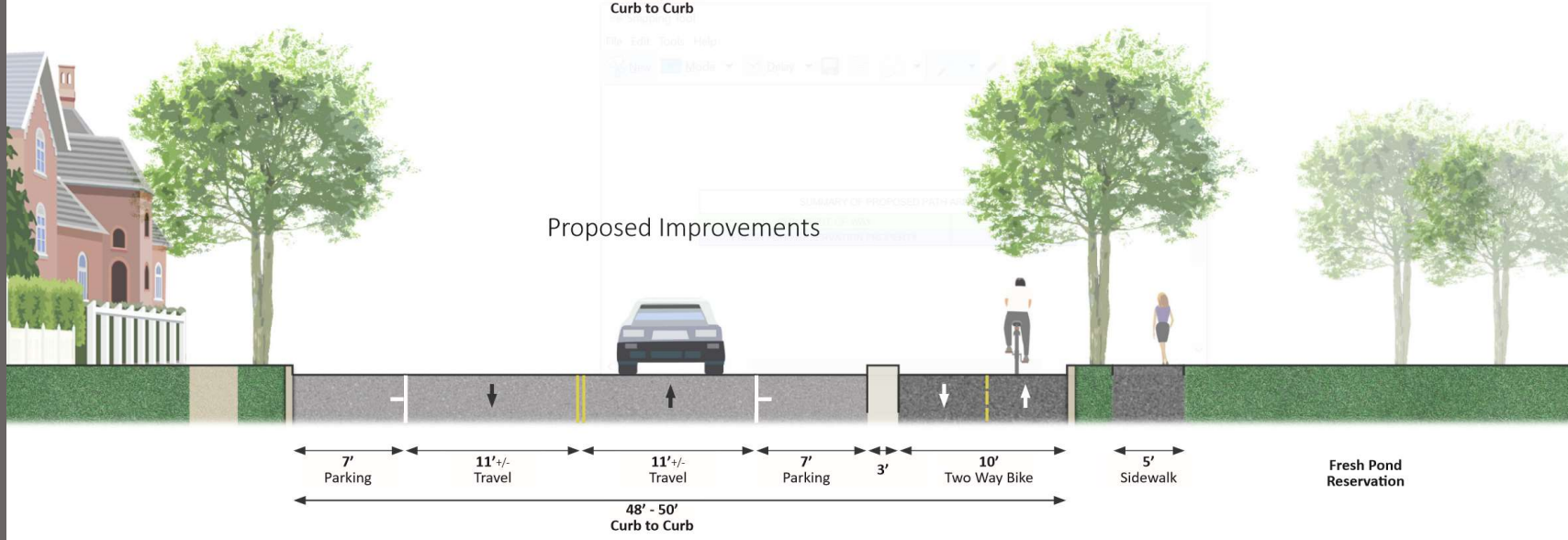
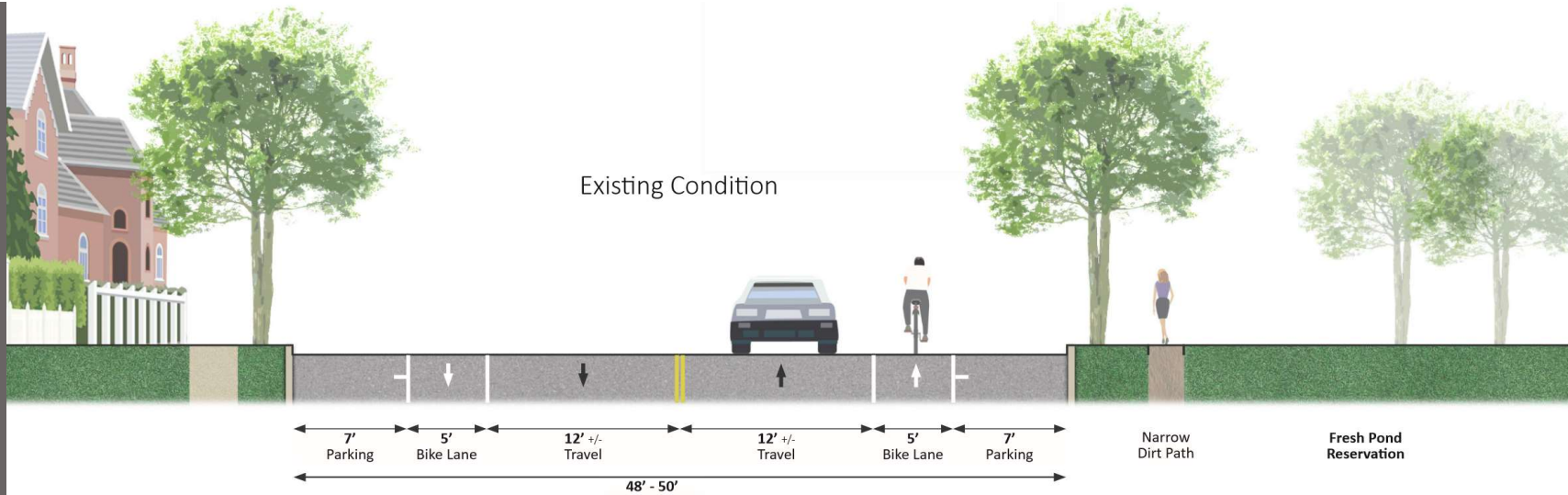


	SF in Right-of-Way	SF in Reservation	% on Reservation
		7000	100%
Using GIS	4442	2512	36%
Modifying design to shift sidewalk closer to the road and completing accurate property line survey	6509	537	< 8%

SUMMARY OF PROPOSED PATH AREA

CITY RIGHT-OF-WAY	6,509 SF
FRESH POND RESERVATION PROPERTY	537 SF





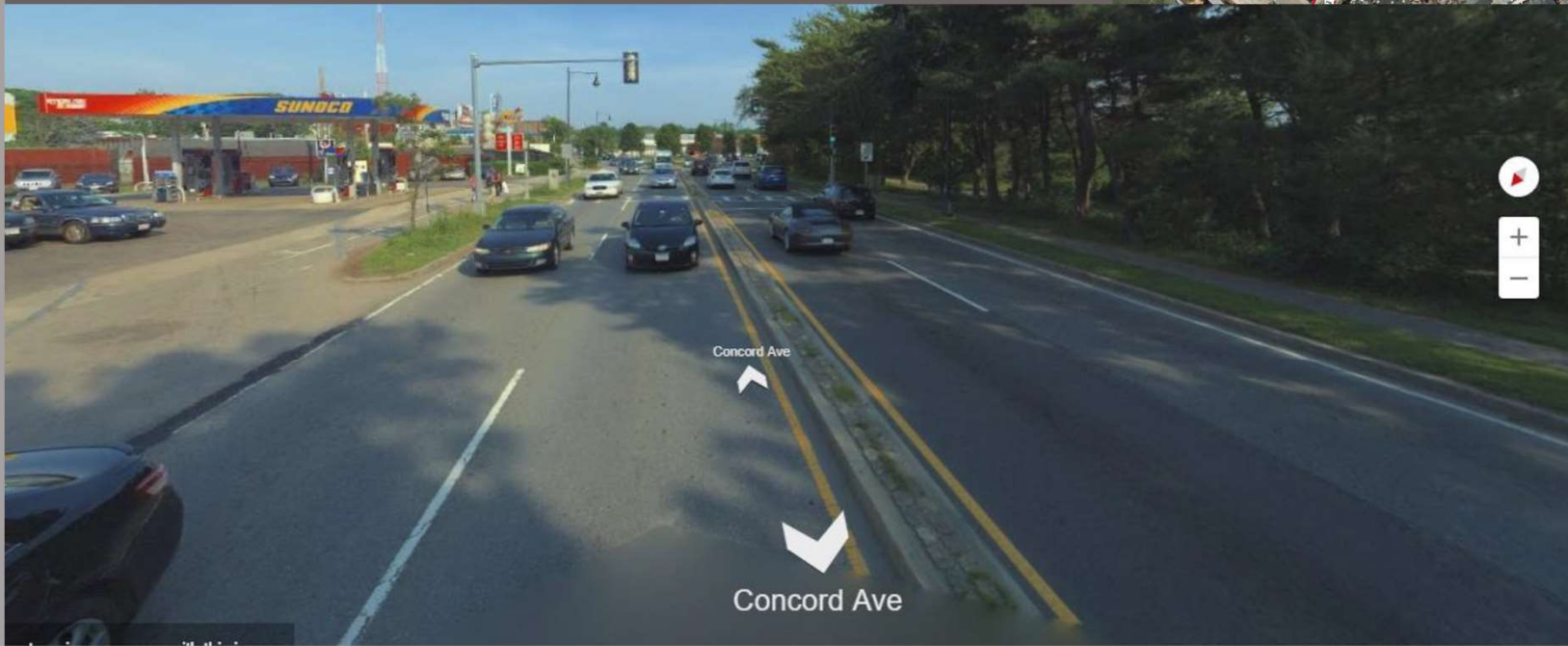
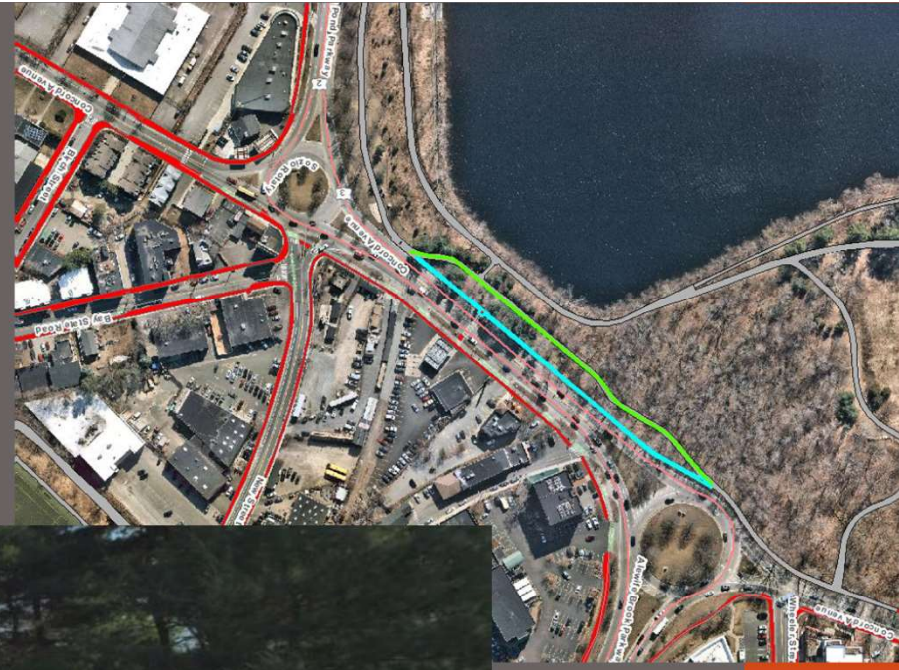




Potential offsets for the 550 sf of paving in Reservation and 6,500 in right-of-way

Location of Future Improvements	Square Footage of Depaving
Pine Forest Path Phase 1 Reduce perimeter road width to uniform 12', add 3' of vegetation	Potential for 5,700
Remove redundant sidewalk opposite Sunoco (DCR), with upcoming Path Project	Potential for 2,400

Redundant sidewalk opposite Sunoco



Great progress – minimized impact on Reservation and identified potential offsets for increased paving.

- Minimal sidewalk proposed on the Reservation (537 +/- sq ft).
- Sidewalk porous asphalt.
- Water Department will maintain the path for winter use with minimizing chlorides and salt.
- Identified offsets that can be implemented as part of future projects.
- Work with Water Board, Advisory Board, and staff to identify tree plantings. Next Slide.
- Worked hard to also minimize the loss of parking. Maintaining 85% of parking (100+/- out of 119+/- spaces).

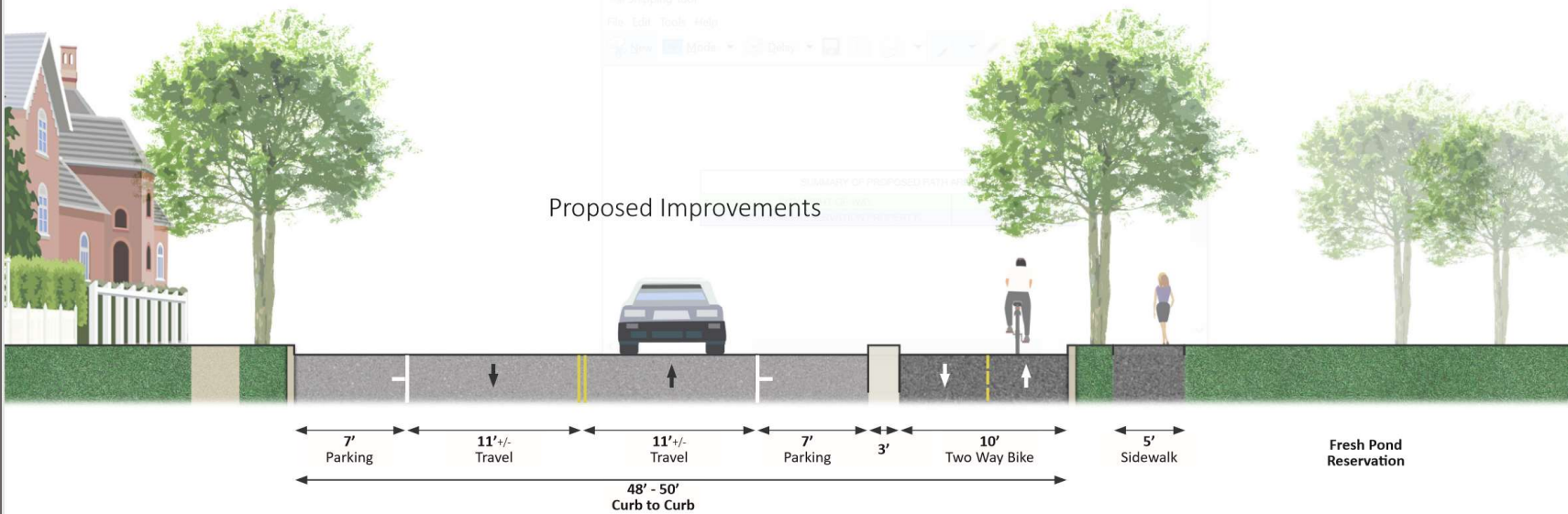
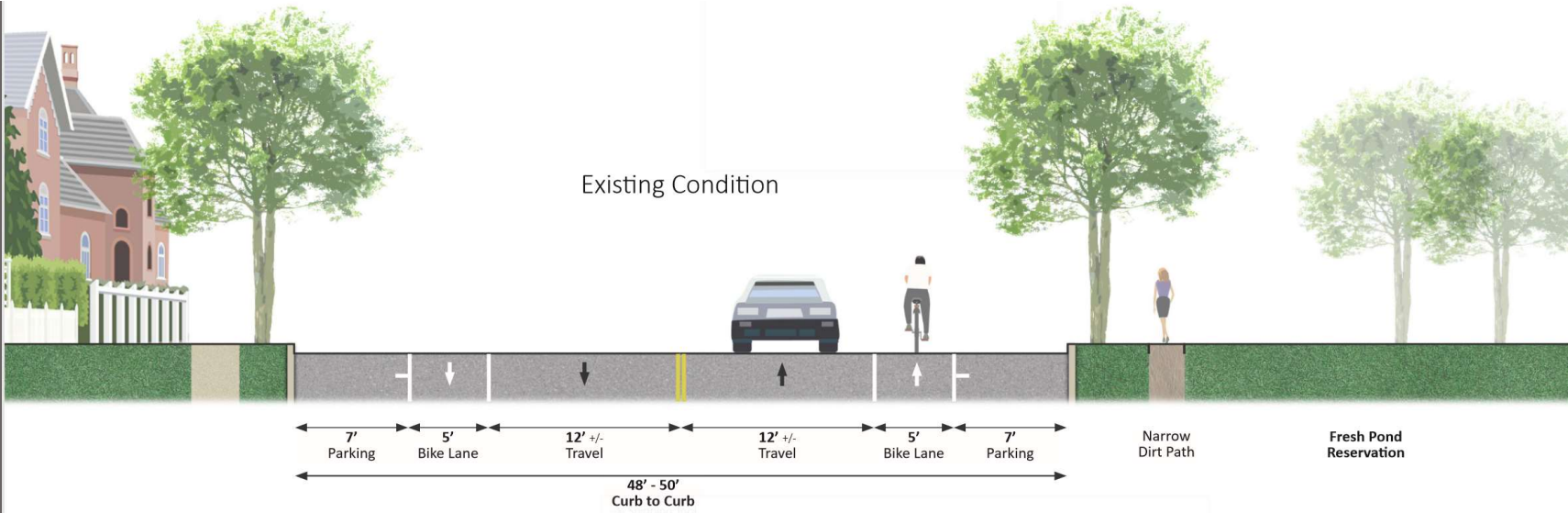
Community Process

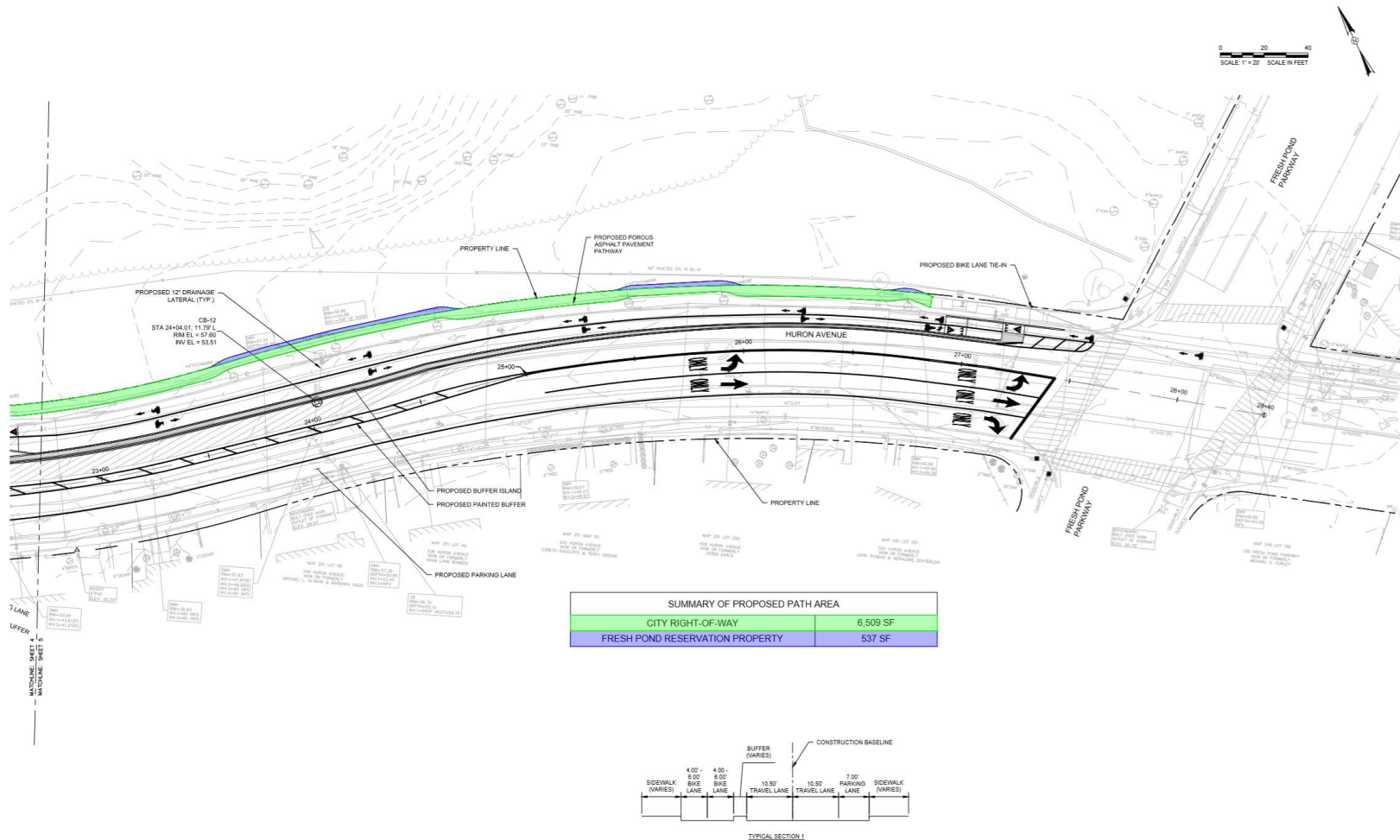
- Water Board, Jan 12th
- Advisory Board, Jan 21st
- Community Meeting, February



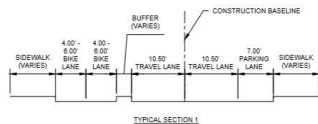
Questions / Comments about Modifications? Trees in this area?







SUMMARY OF PROPOSED PATH AREA	
CITY RIGHT-OF-WAY	6,509 SF
FRESH POND RESERVATION PROPERTY	537 SF



KLEINFELDER & ASSOCIATES, INC. 1000 STATE STREET, SUITE 200, CAMBRIDGE, MASSACHUSETTS 02142
 TEL: 617.552.3300 FAX: 617.552.3301 WWW.KLEINFELDER.COM
 TOOLE DESIGN, INC. 1000 STATE STREET, SUITE 200, CAMBRIDGE, MASSACHUSETTS 02142
 TEL: 617.552.3300 FAX: 617.552.3301 WWW.TOOLEDESIGN.COM



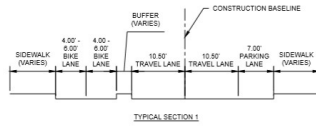
Scale	AS NOTED
Drawn	DECEMBER 2021
Job No.	2020104.002A
Designed by	MCT
Drawn by	MCT
Checked by	BMS
Approved by	---



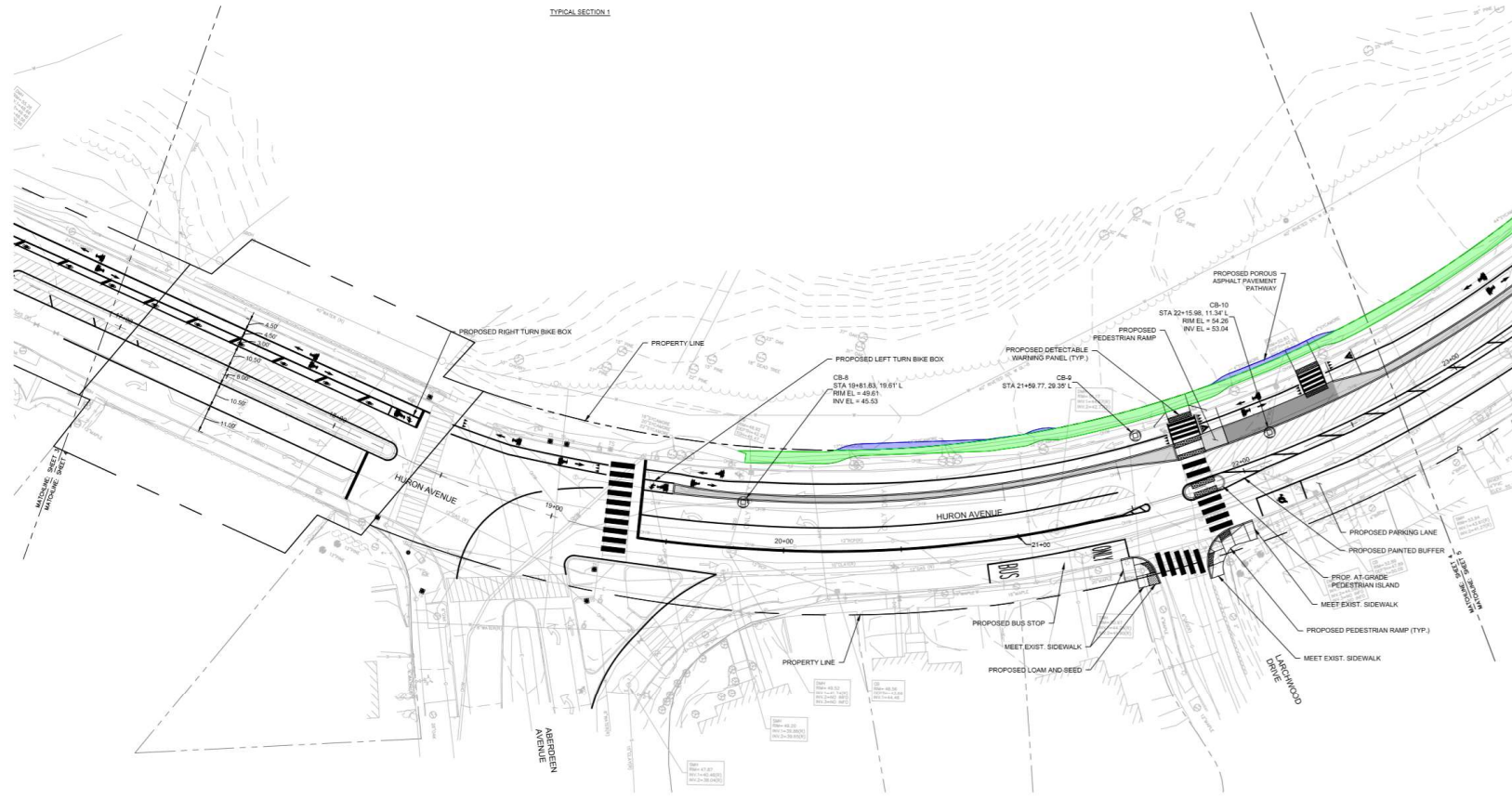
Client	CITY OF CAMBRIDGE, MASSACHUSETTS
Project	HURON AVE BICYCLE LANE IMPROVEMENTS
Drawing	CONSTRUCTION PLAN - STA. 23+00 TO STA. 28+40

Sheet	R-5
File No.	XXXX





0 20 40
SCALE 1" = 20' SCALE IN FEET



50% DESIGN SET



TOOLE
DESIGN

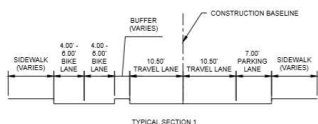
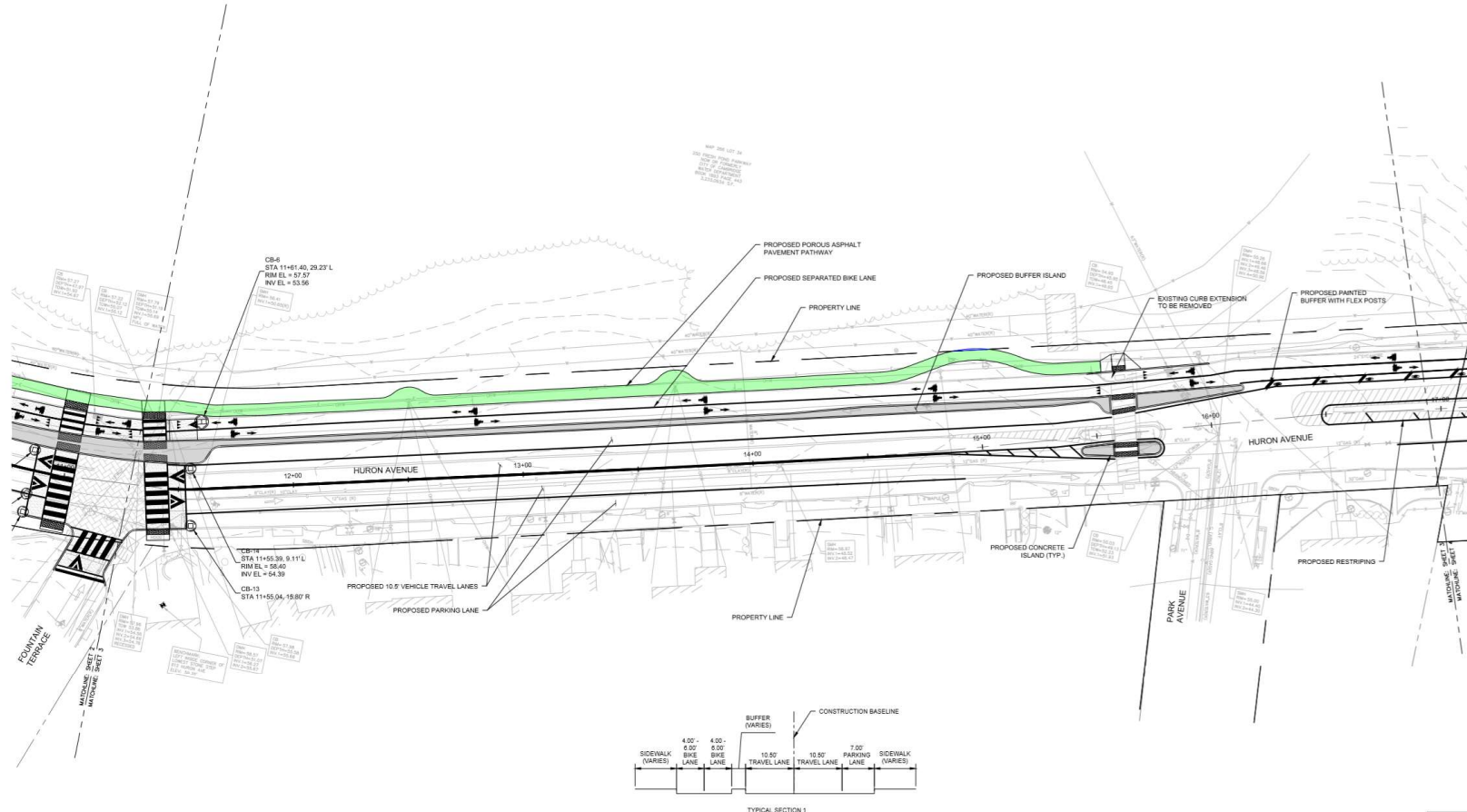
Scale	AS NOTED			
Date	DECEMBER 2020			
Job No.	2020104-004			
Designed by	MCT			
Drawn by	MCT			
Checked by	BMS	No.	Description	Date
Approved by	—		REVISIONS	



Client	CITY OF CAMBRIDGE, MASSACHUSETTS
Project	HURON AVE BICYCLE LANE IMPROVEMENTS
Drawing	CONSTRUCTION PLAN - STA. 17+00 TO STA. 23+00

Sheet	R-4
File No.	XXXX

0 20 40
SCALE 1" = 20' SCALE IN FEET



50% DESIGN SET



Scale	AS NOTED
Date	DECEMBER 2020
Job No.	20201034.002A
Designed by	MCT
Drawn by	MCT
Checked by	BMS
Approved by	---

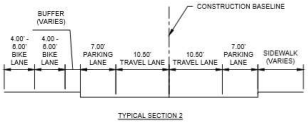
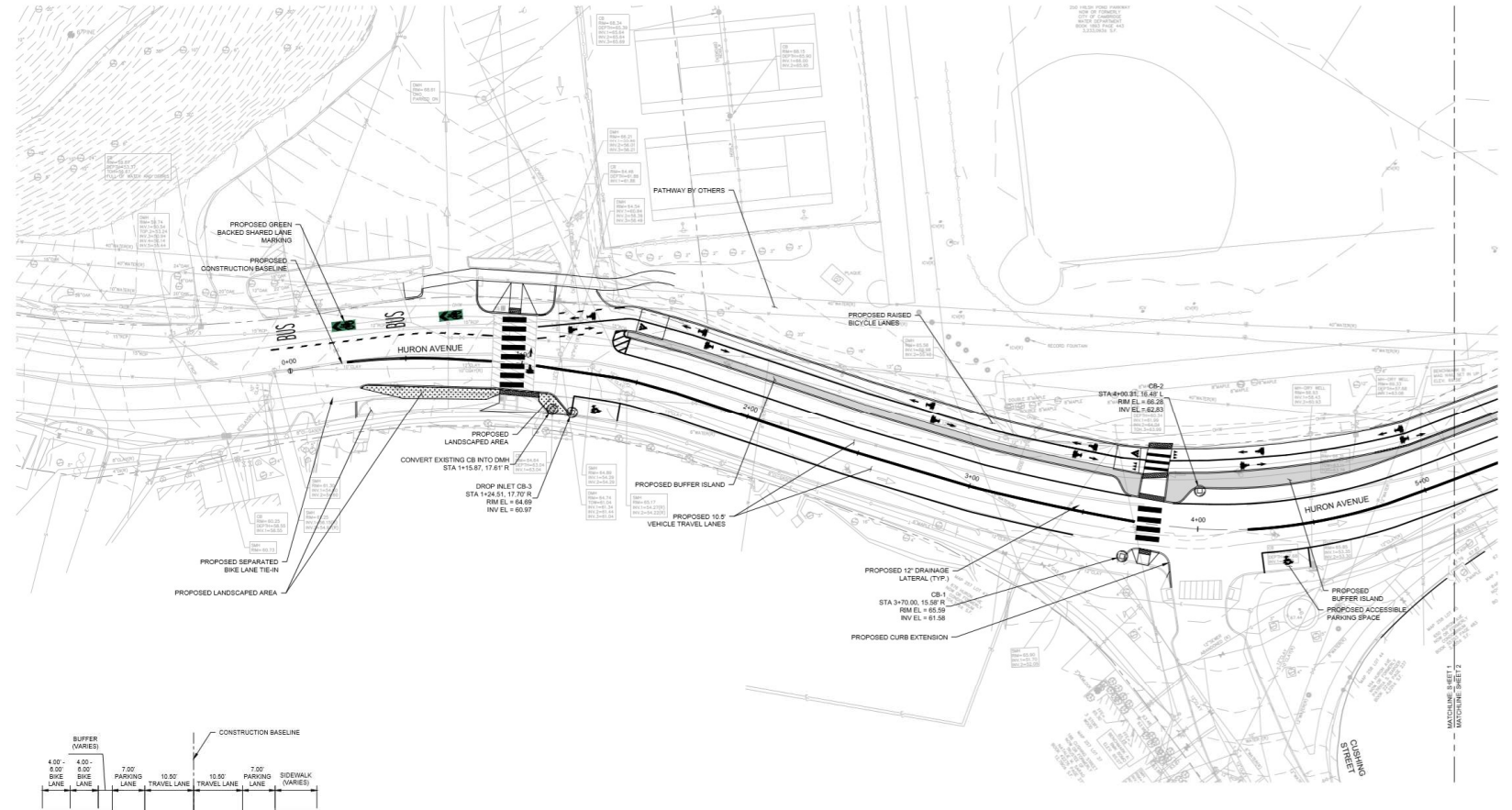


Client	CITY OF CAMBRIDGE, MASSACHUSETTS
Project	HURON AVE BICYCLE LANE IMPROVEMENTS
Drawing	CONSTRUCTION PLAN - STA. 11-25 TO STA. 17-00

Sheet	R-3
File No.	XXXX



0 20 40
SCALE: 1" = 20' SCALE IN FEET



50% DESIGN SET



Scale	AS NOTED
Date	DECEMBER 2020
Job No.	2020104-0024
Designed by	MCT
Drawn by	MCT
Checked by	BMS
Approved by	-



Client	CITY OF CAMBRIDGE, MASSACHUSETTS
Project	HURON AVE BICYCLE LANE IMPROVEMENTS
Drawing	CONSTRUCTION PLAN - STA. 00+00 TO STA. 05+00

Sheet	R-1
File No.	XXXX

