



# City of Cambridge

PURCHASING DEPARTMENT

**Elizabeth Unger**  
Purchasing Agent

**SHUO WANG**  
Assistant Purchasing Agent for  
Goods & Services

**NATALIE SULLIVAN**  
Assistant Purchasing Agent for  
Design & Construction

**TO: All Bidders**

**FROM: City of Cambridge**

**DATE: January 23, 2024**

**RE: File No. 11355 – FY24 Cleaning and CCTV Inspection of Sanitary Sewer, Combined Sewers and Storm Drains and Emergency Services - Addendum No. 1**

---

**This addendum is comprised of the following:**

- 1. Question and answer**

**The following question was asked and answered:**

**Question 1: Are record drawings available for the siphons to be cleaned as part of this Contract?**

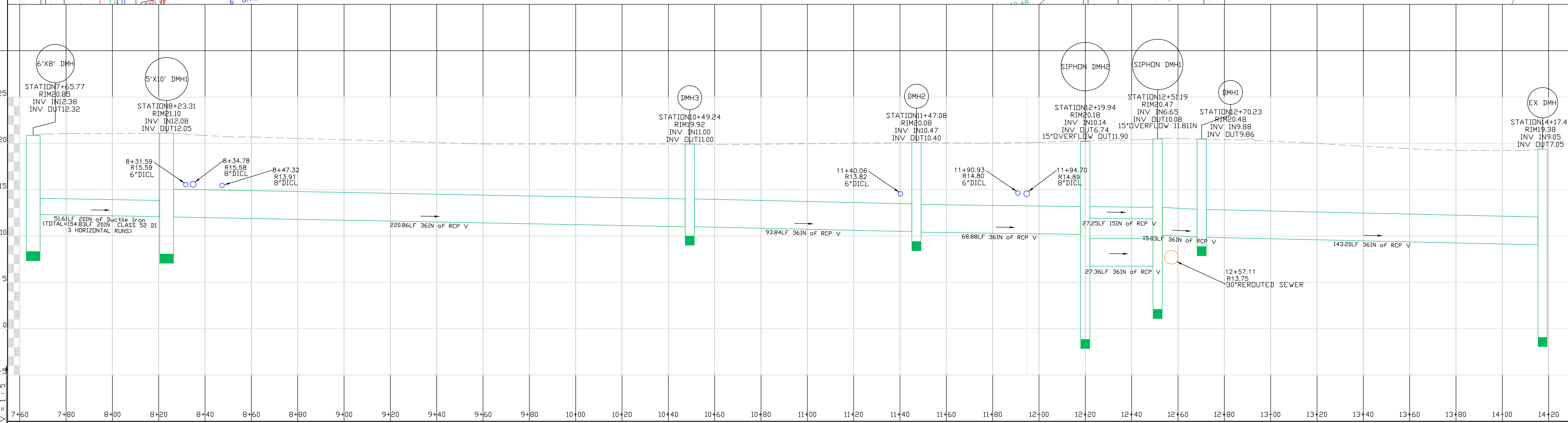
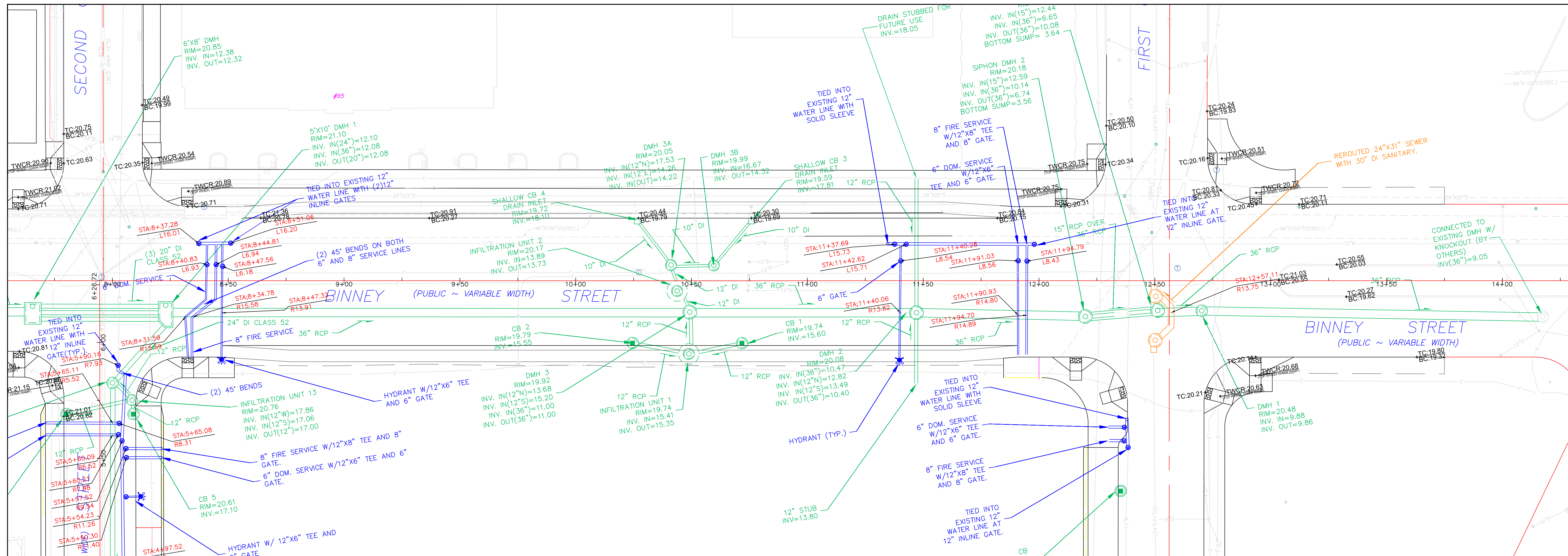
**Answer 1: Drawings attached.**

**All other details remain the same.**

**Elizabeth Unger**  
**Purchasing Agent**

**Addendum No. 1**

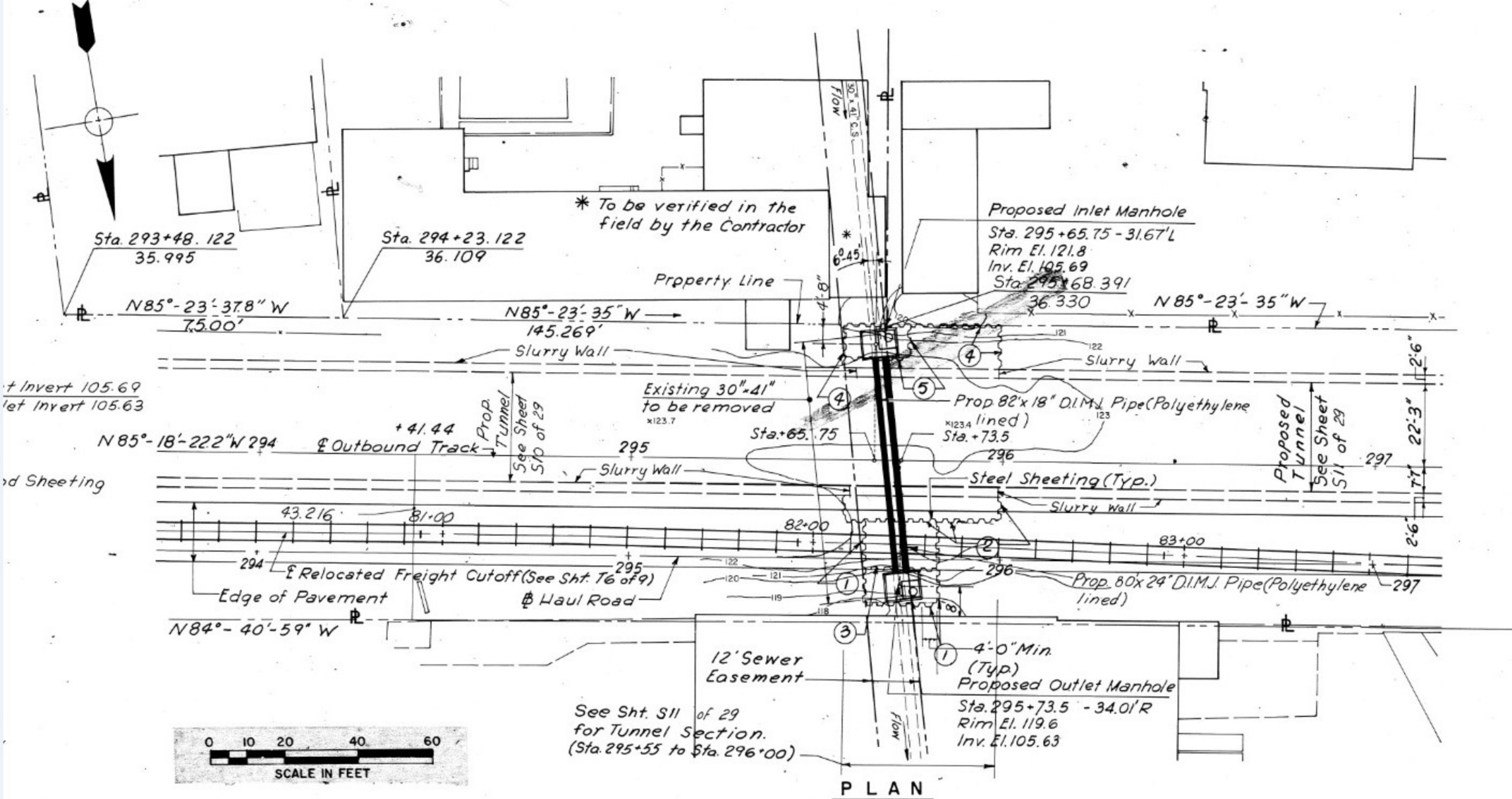




NO.	REVISIONS	BY	DATE	PROJECT MANAGER: S.S.	DATE	SCALE	BINNEY STREET DRAINAGE PROFILES	SHEET 4 OF 9
				SUPERINTENDANT: C.P.	NOV. 12, 2015	V:1"=5' H:1"=20'		
				DRAWN: D.B.				
				JDC JOB# 1.3022				







\* To be verified in the field by the Contractor

Proposed Inlet Manhole  
 Sta. 295+65.75 - 31.67'L  
 Rim El. 121.8  
 Inv. El. 105.69  
 Sta. 295+68.39/

Prop 82'x 18" D.I.M.J. Pipe (Polyethylene lined)  
 Sta. +65.75  
 Sta. +73.5

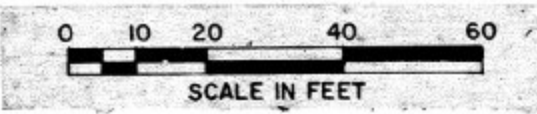
Prop 80'x 24" D.I.M.J. Pipe (Polyethylene lined)

4'-0" Min. (Typ) Proposed Outlet Manhole  
 Sta. 295+73.5 - 34.01'R  
 Rim El. 119.6  
 Inv. El. 105.63

See Sht. S11 of 29 for Tunnel Section. (Sta. 295+55 to Sta. 296+00)

**PLAN**

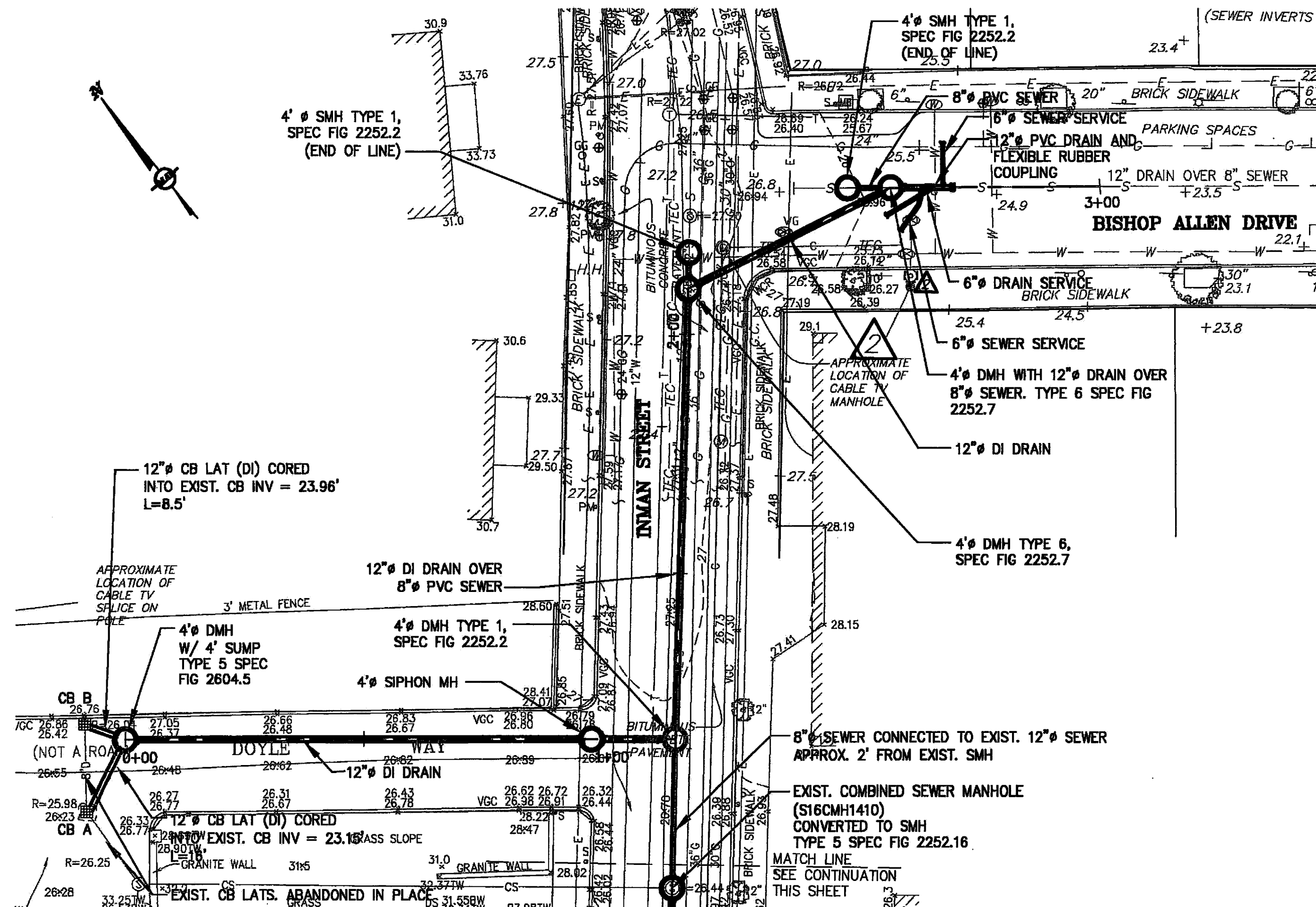
Scale: 1" = 20'



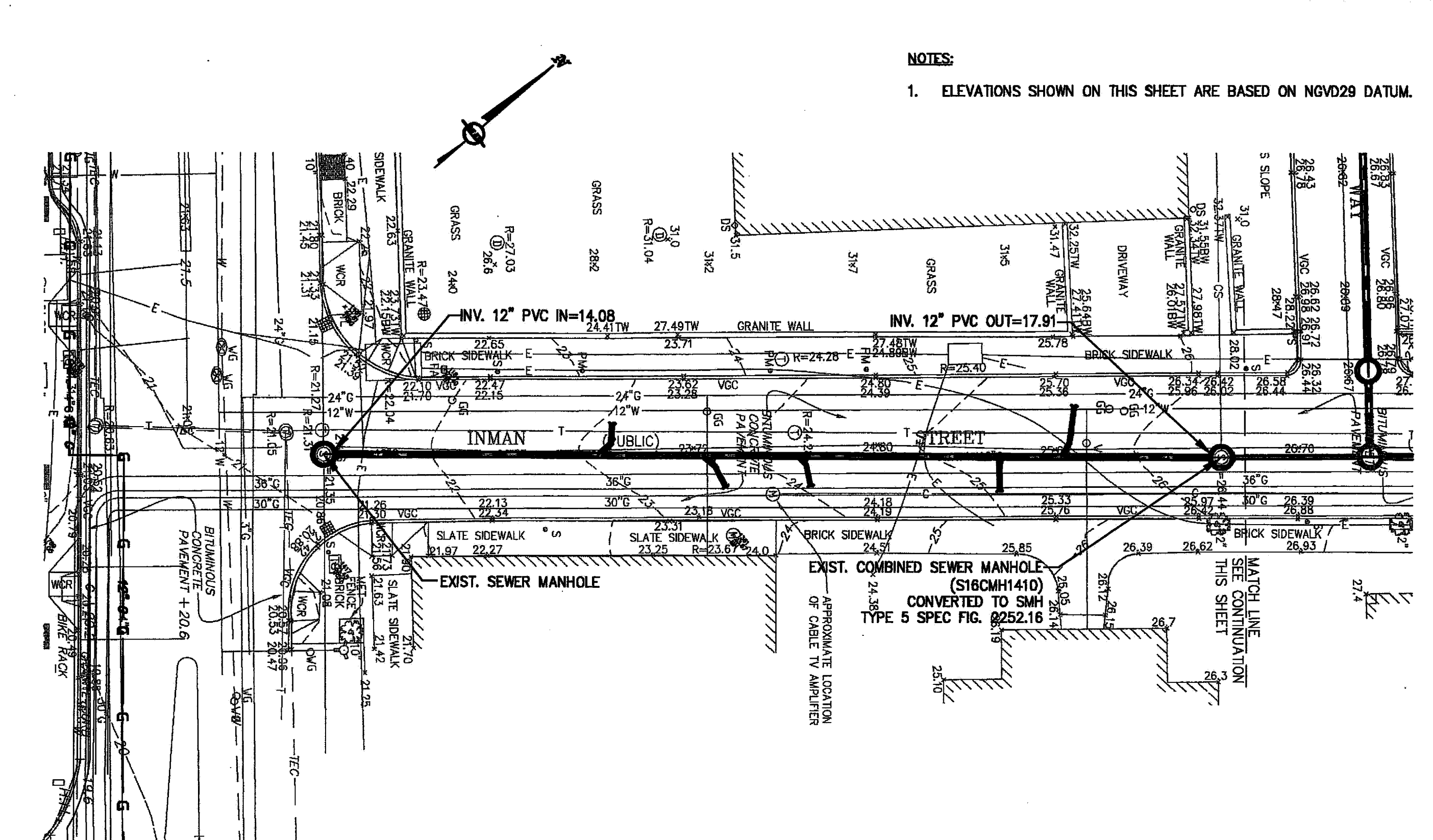
Reloc. Tracks  
 Haul Road



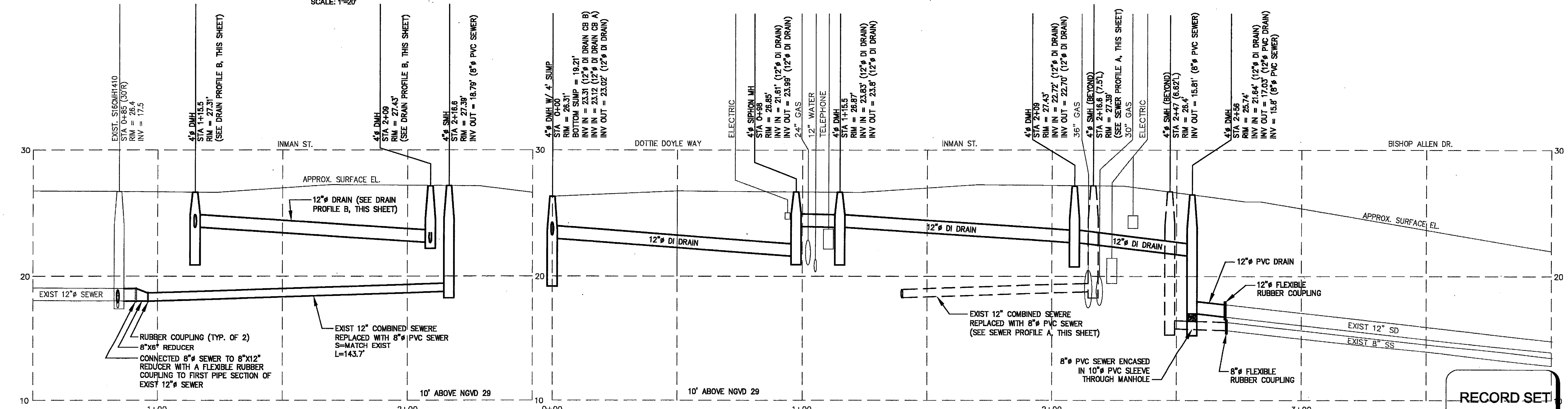




**PLAN - DOTTIE DOYLE, INMAN, BISHOP ALLEN**  
SCALE: 1"=20'



**PLAN - INMAN ST FROM DOTTIE DOYLE TO MASS AVE**  
SCALE: 1"=20'



**PROFILE A**  
SCALE: 1"=20' H 1"=4' V

**PROFILE B**  
SCALE: 1"=20' H 1"=4' V

**RECORD SET**

**MWH**  
BOSTON  
MASSACHUSETTS

**RECORD DRAWING**  
THESE RECORD DOCUMENTS HAVE BEEN PREPARED BASED ON FIELD OBSERVATIONS AND FIELD MEASUREMENTS OF CONSTRUCTION BY OTHERS. KLEINFELDER/SEA CONSULTANTS INC. AND MWH SHALL NOT BE RESPONSIBLE FOR ANY ERRORS OR OMISSIONS THAT MAY BE INCORPORATED AS A RESULT OF INFORMATION PROVIDED BY OTHERS OR OF CONSTRUCTION BY OTHERS.

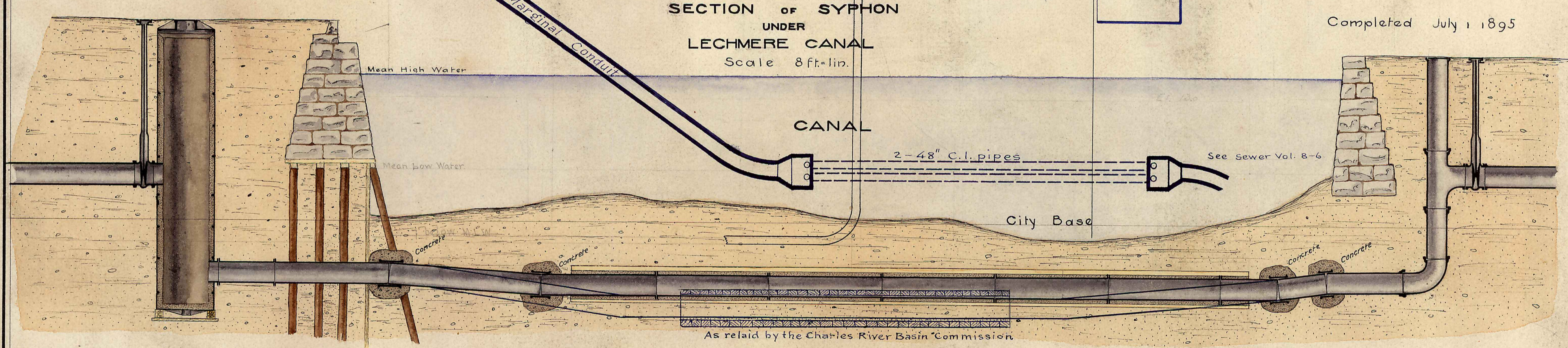
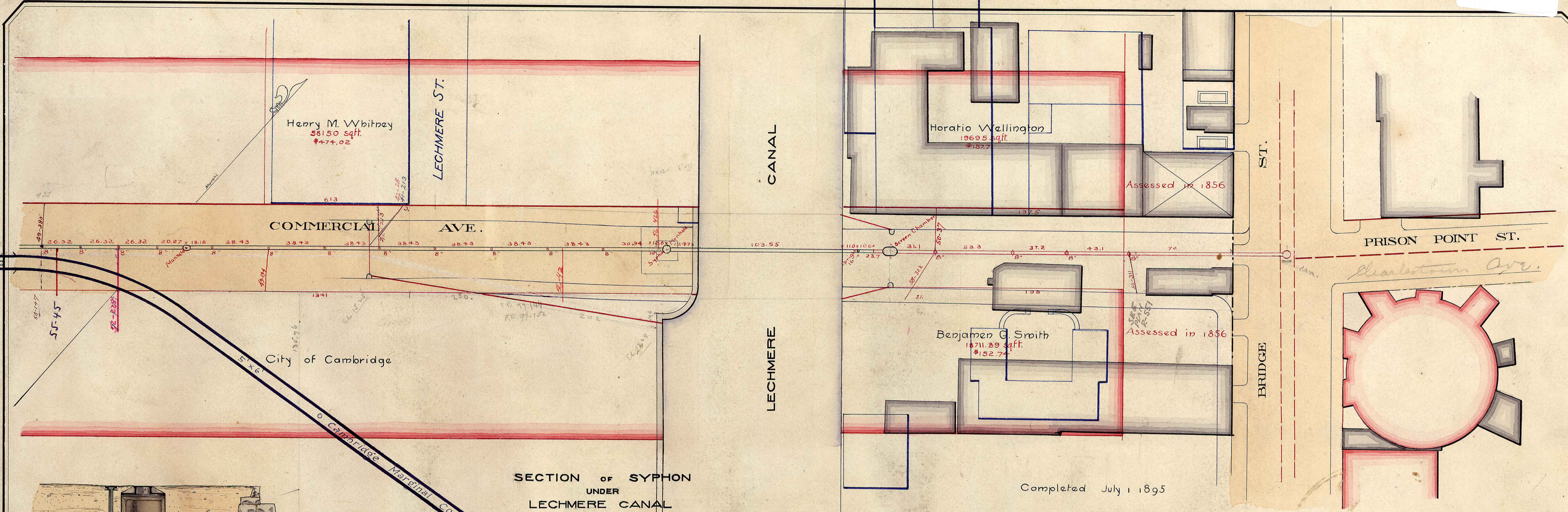
Scale	AS NOTED	RECORD DRAWING	9/28/09
Date	APR 2008		
Job No.	2220376		
Designed by	DHG		
Drawn by	MAW		
Checked by	JGS		
Approved by	MDT		

**THE WORKS**  
CAMBRIDGE  
DEPARTMENT  
OF PUBLIC

CITY OF CAMBRIDGE, MASSACHUSETTS  
COMMON MANHOLE REMOVAL CONTRACT NO. 4  
CIVIL  
INMAN STREET - SITE 21

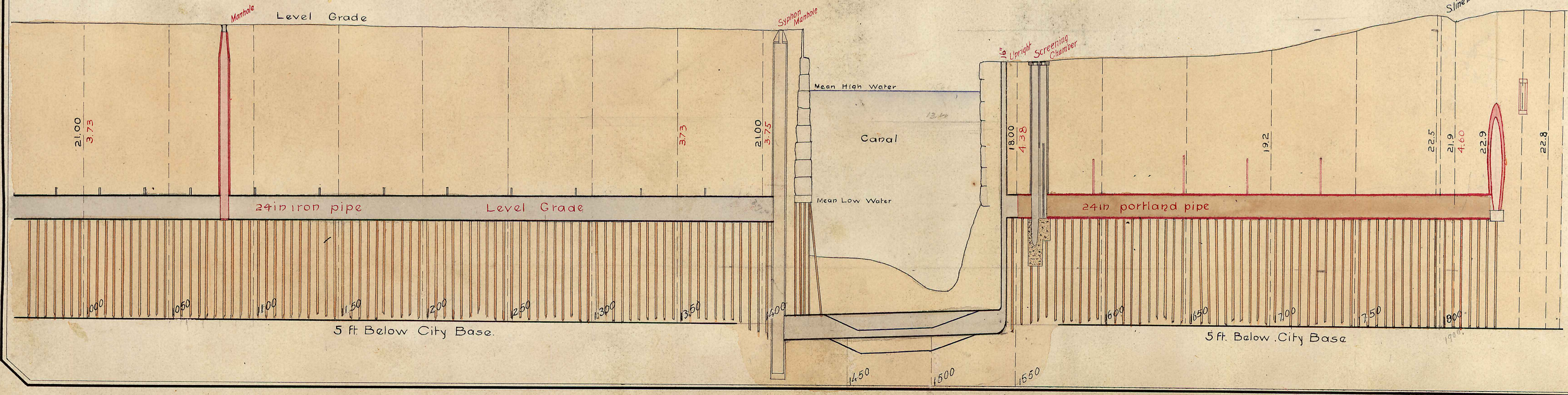
Sheet No. **C-11**  
File No.





PLAN OF  
COMMERCIAL AVE.  
SEWER FOR ASSESSMENT  
Scales 40 and 6 ft. to an inch

Office of the City Engineer, Cambridge  
1895





# BOSTON ELEVATED RAILWAY

ELEVATED & SUBWAY CONSTRUCTION

## CAMBRIDGE MAIN ST. SUBWAY

PROPOSED RELOCATION OF

### CITY SEWER

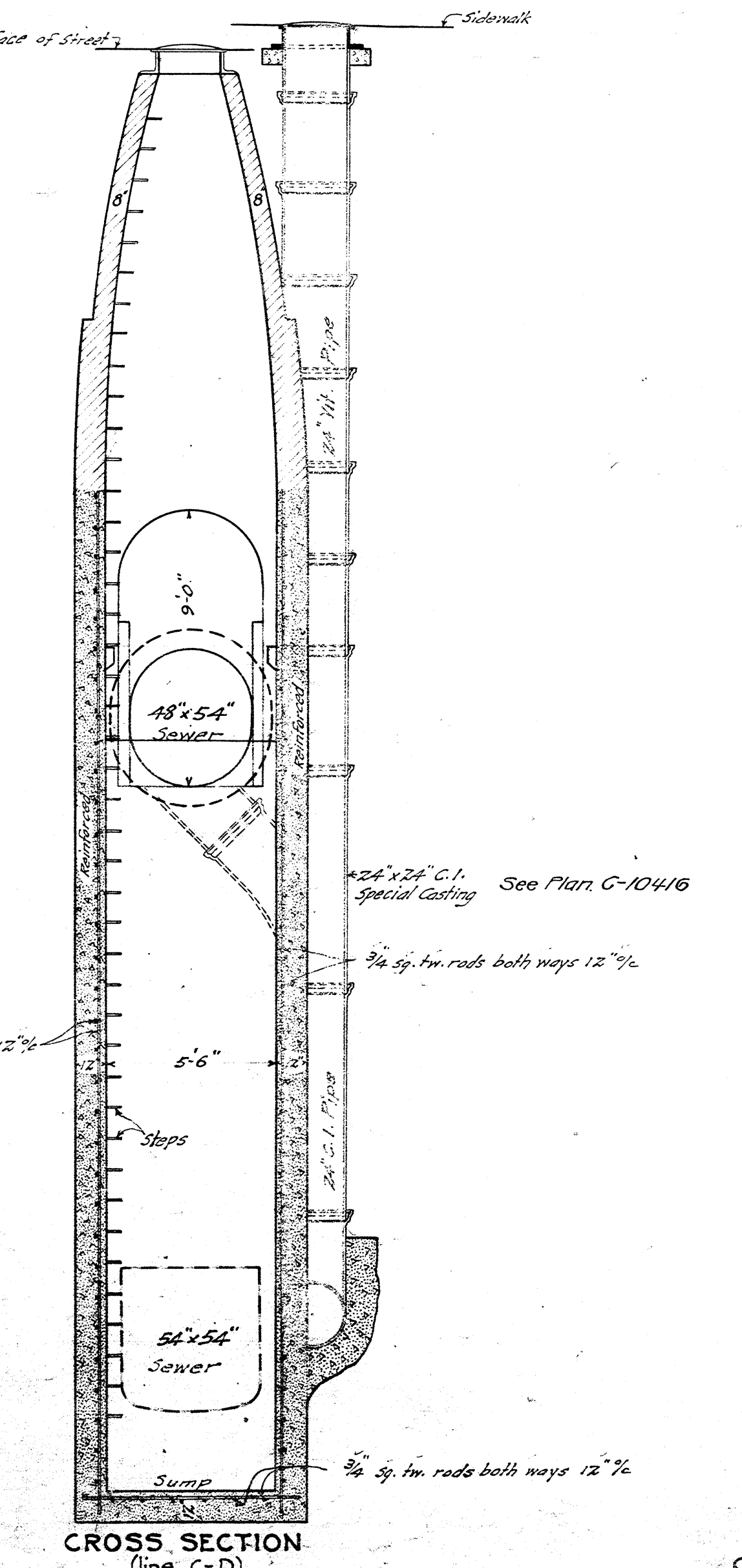
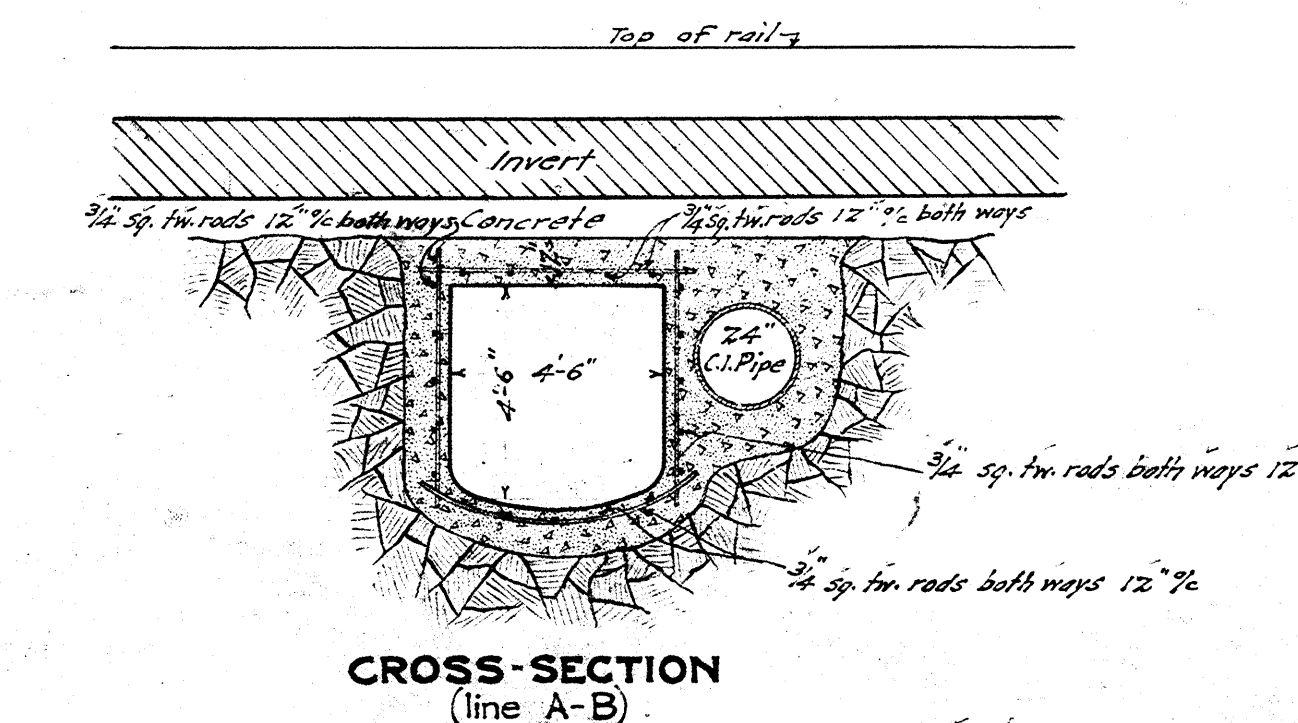
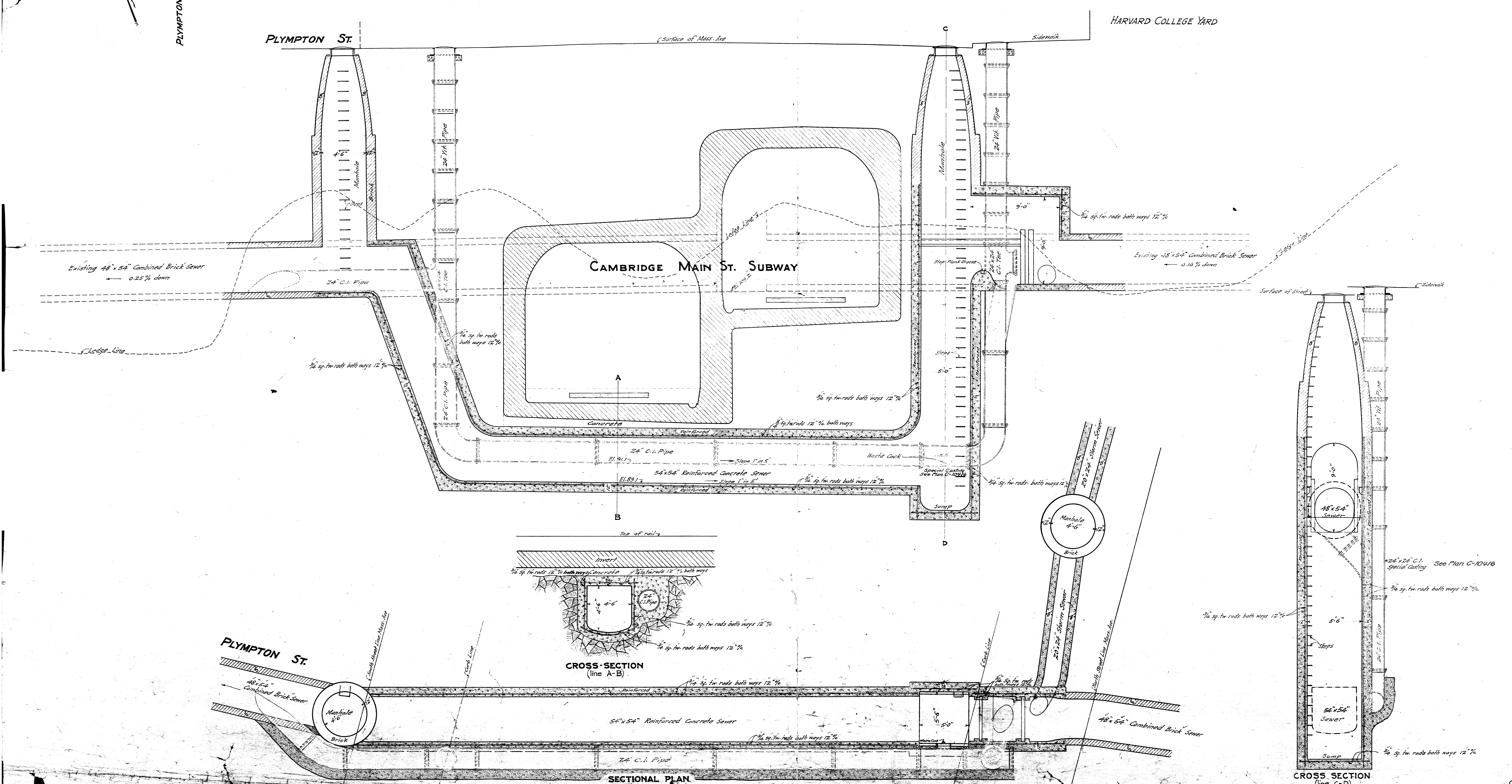
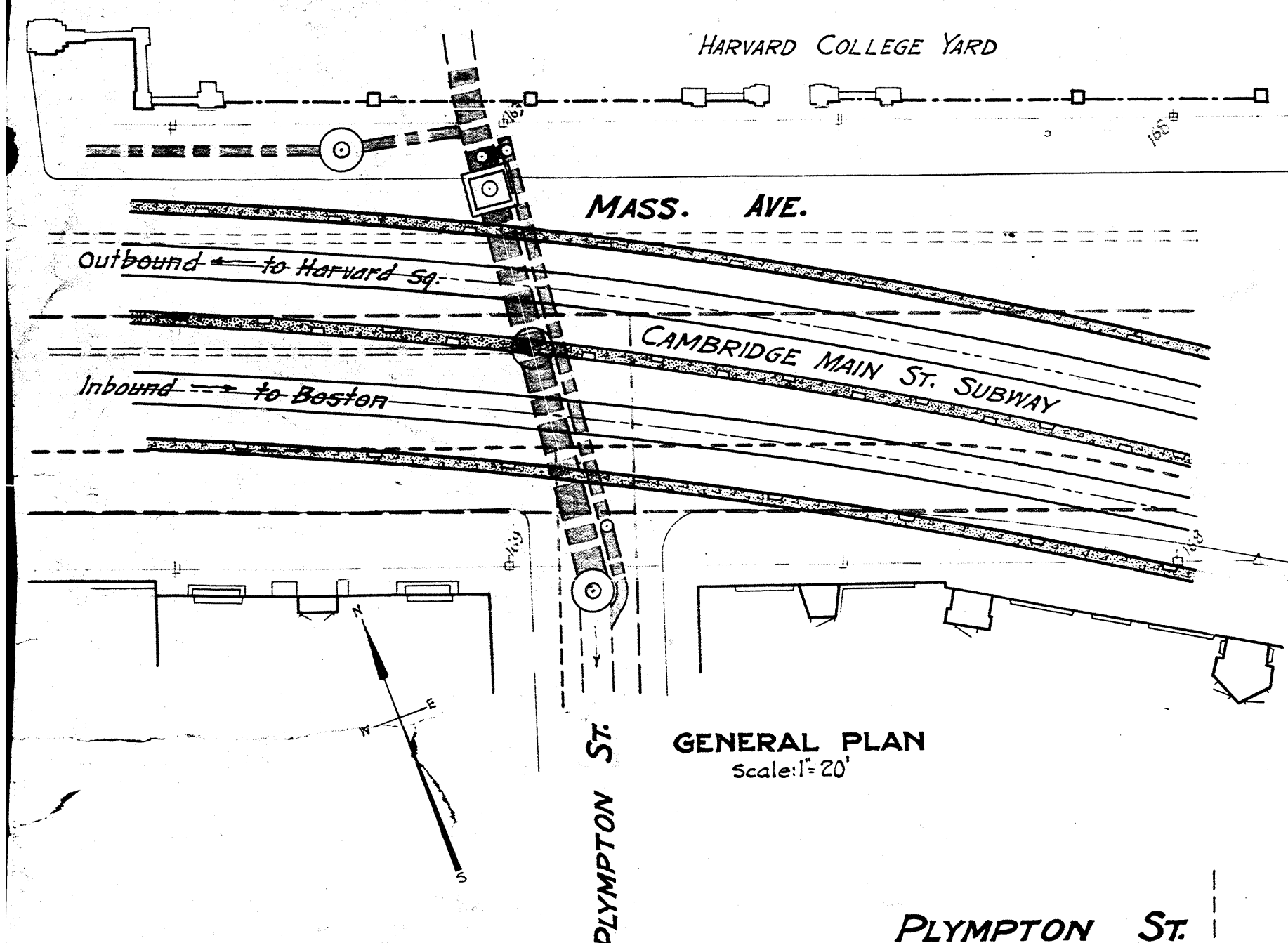
MASS. AVE. AT PLYMPTON ST.

Scale  $\frac{1}{4}$  in. = 1 ft.

Dec. 1909.

Drawn by R. S. Peasney  
Computed by W. A. Bennett  
Checked by P. H. Hill  
Approved by Frank H. Carter  
Designing Engineer

Approved Dec. 30, 1909.  
George A. Kimball  
CHIEF ENGINEER





**BOSTON ELEVATED RAILWAY**

ELEVATED & SUBWAY CONSTRUCTION

**CAMBRIDGE MAIN ST. SUBWAY**

PROPOSED RELOCATION OF

**METROPOLITAN & CITY SEWERS**

MAIN ST. AT PORTLAND ST.

Scales  $\left\{ \begin{array}{l} 1" = 8' \\ 1" = 4' \end{array} \right.$

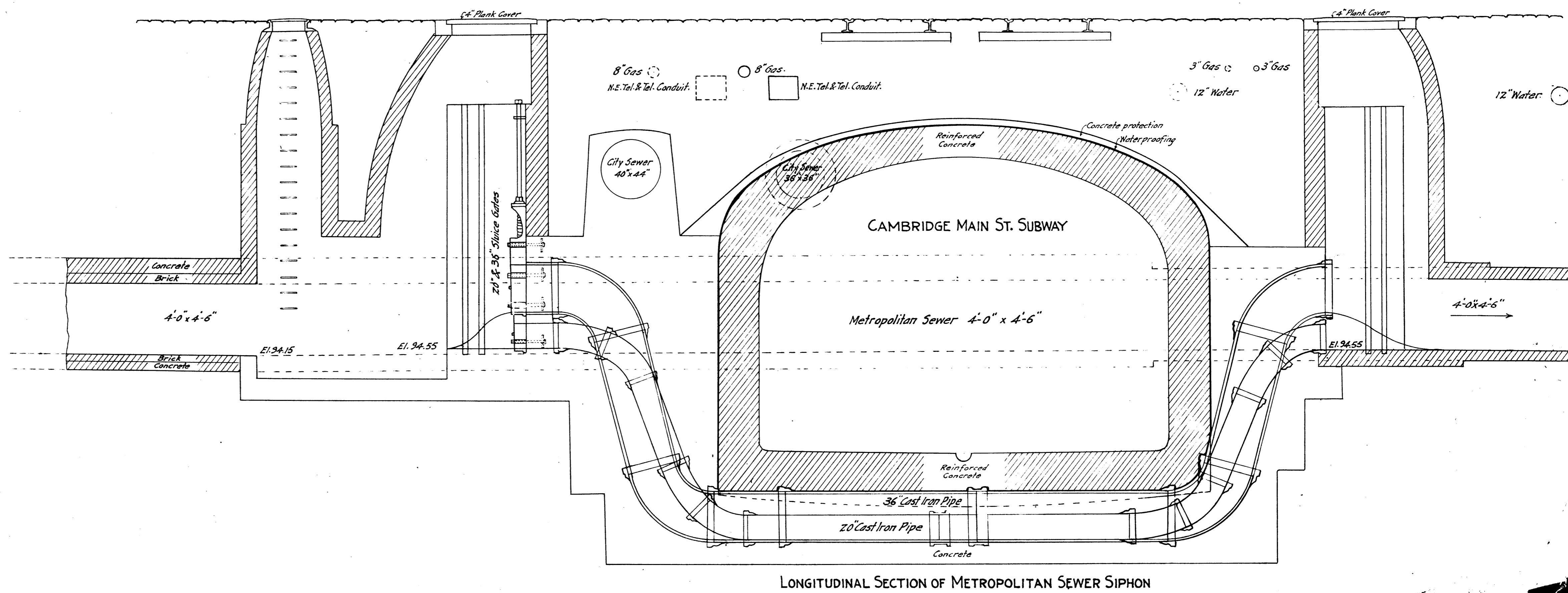
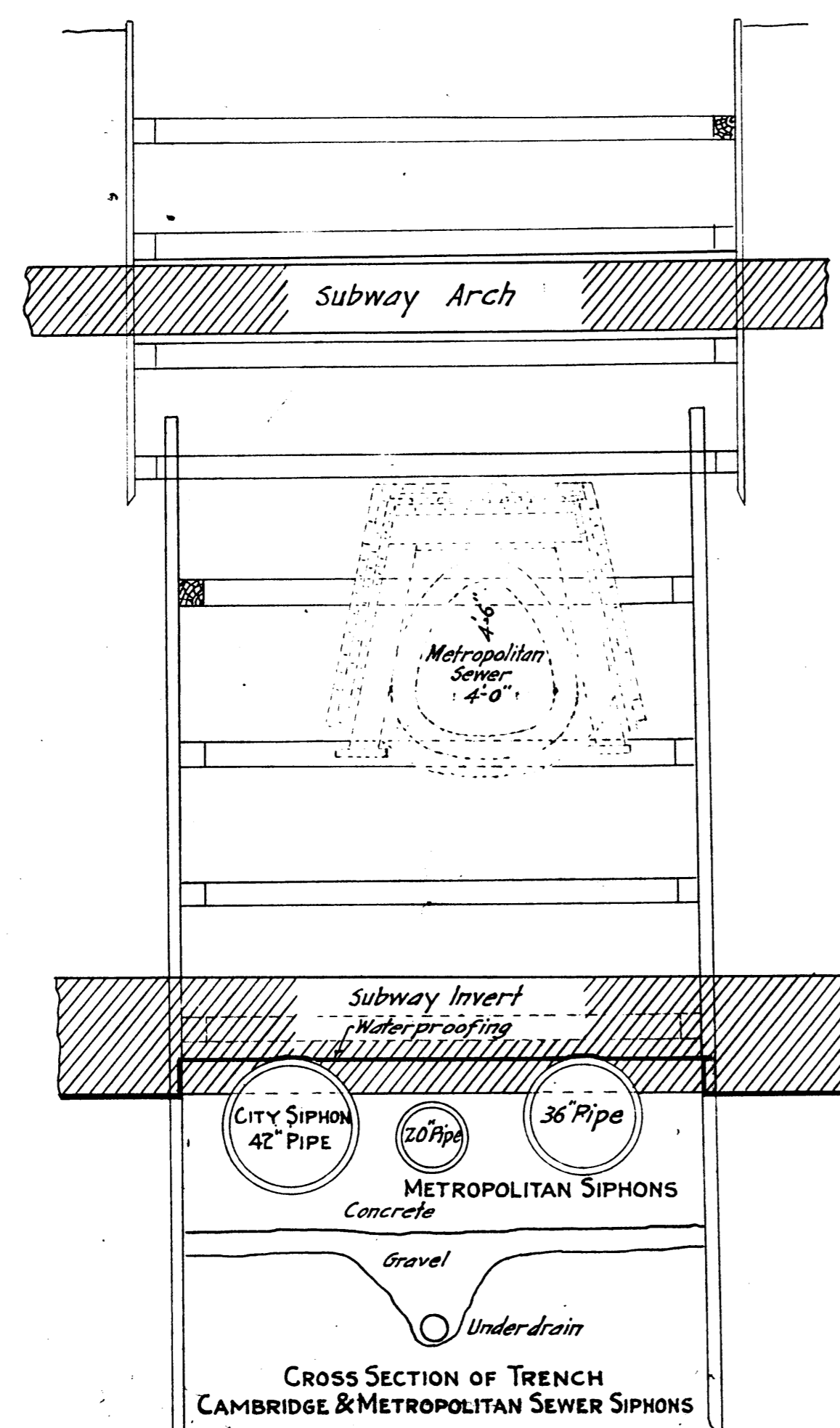
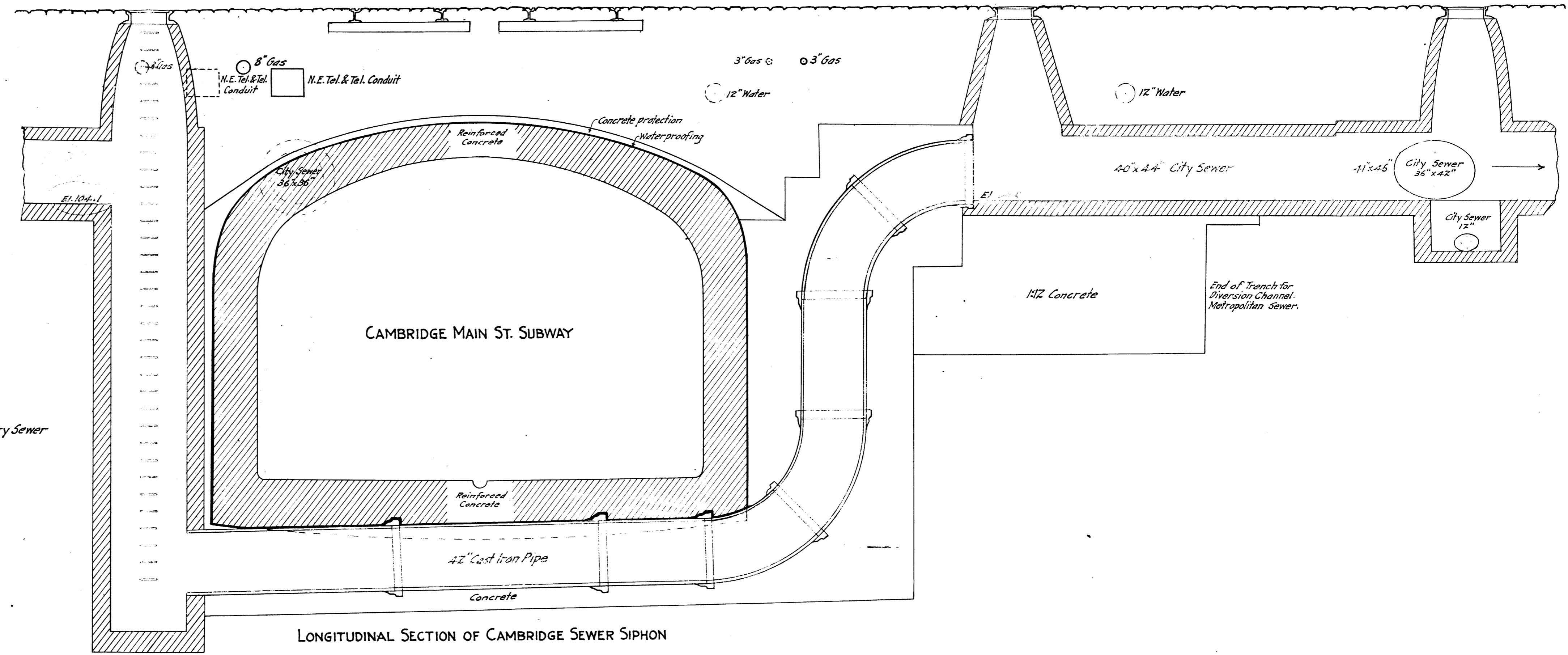
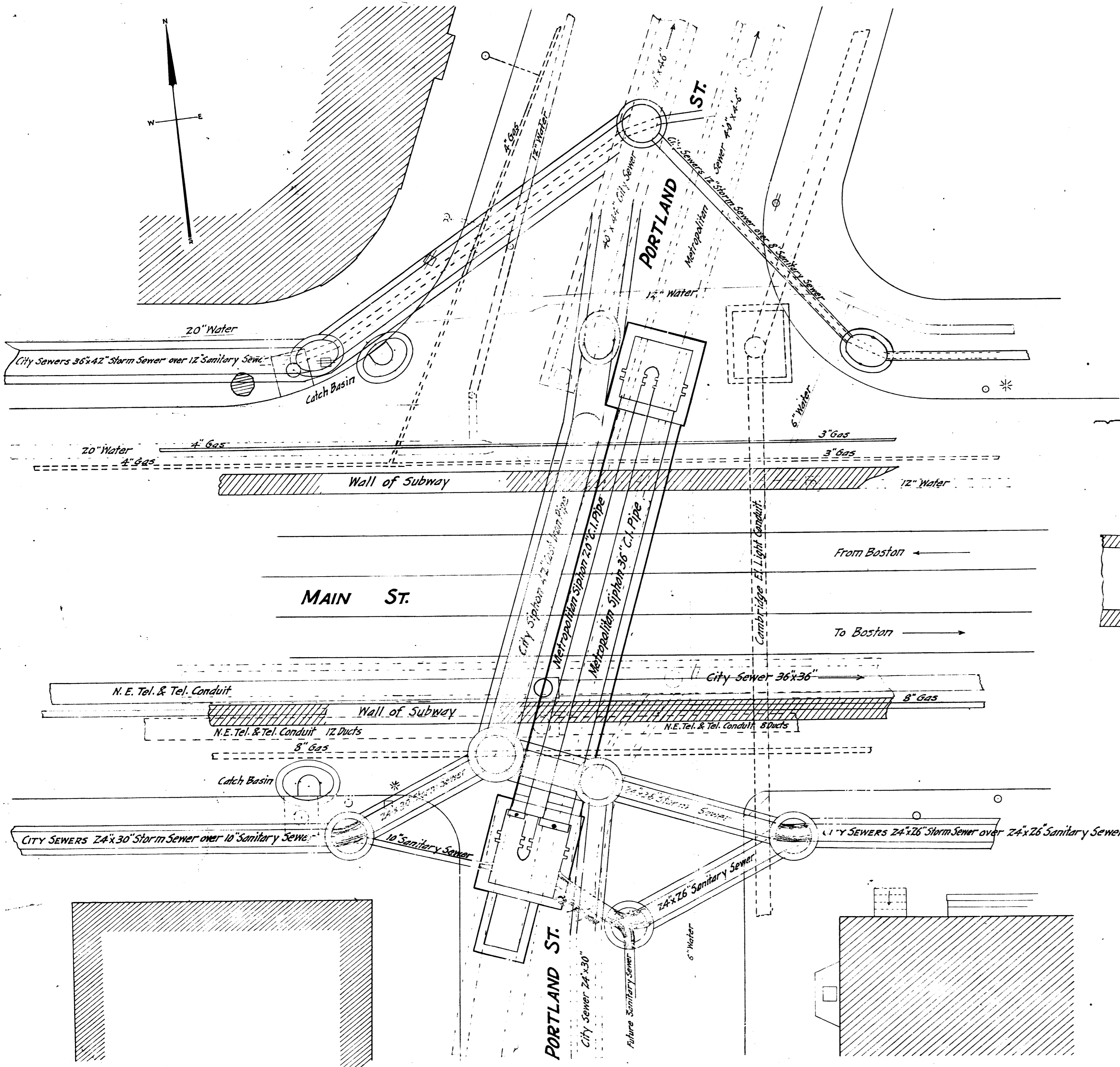
July 1909

Drawn by *Seth Peterson*

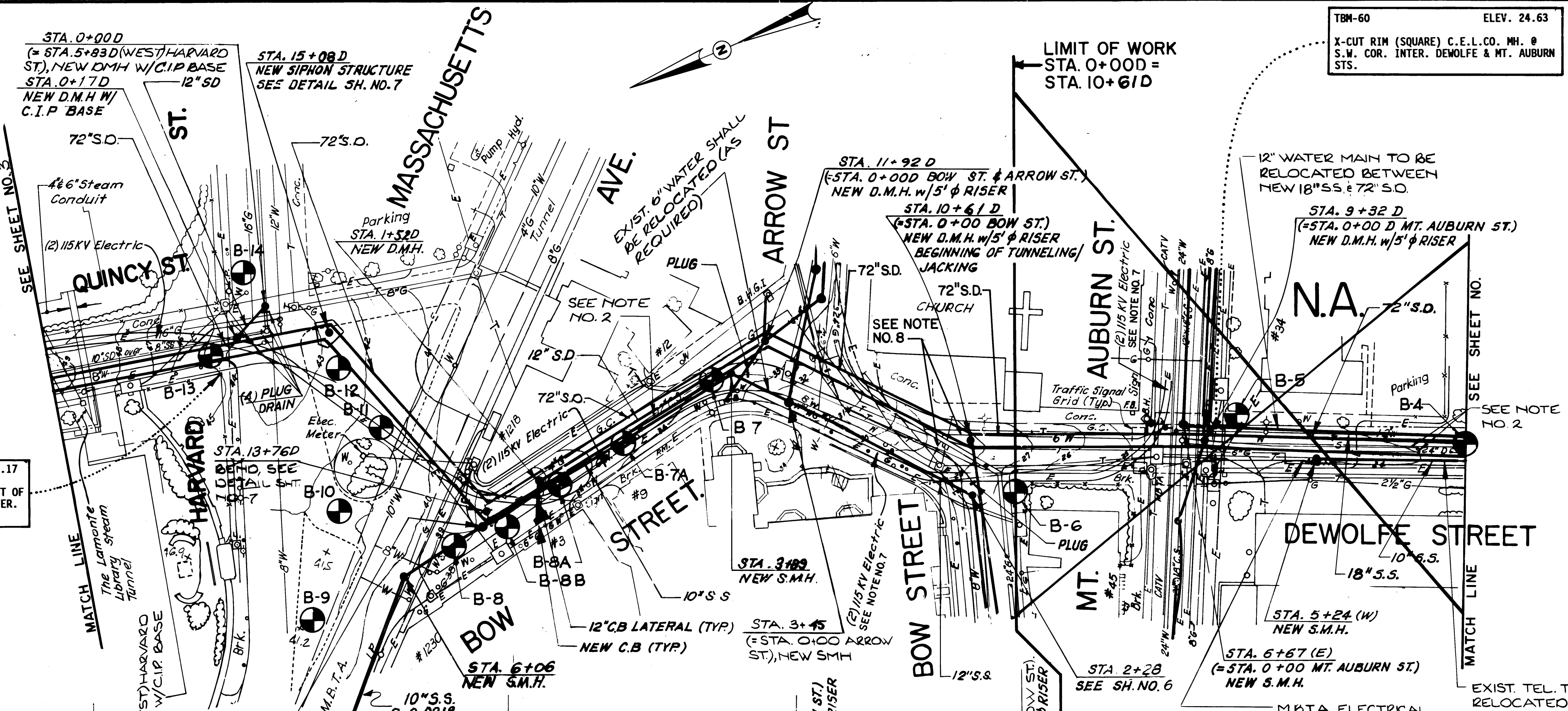
Approved *July 26<sup>th</sup> 1909*  
*George A. Kimball*  
CHIEF ENGINEER

Existing Sewers shown by dotted red ink lines. New or Relocated Sewers shown by full black lines.

" Water Pipes "	" blue "	" "	" Water Pipes "	" blue "
" Gas Pipes "	" brown "	" "	" Gas Pipes "	" brown "
" Tel. Conduits "	" green "	" "	" Tel. Conduits "	" green "
" El. Light Conduits "	" yellow "	" "	" "	" "





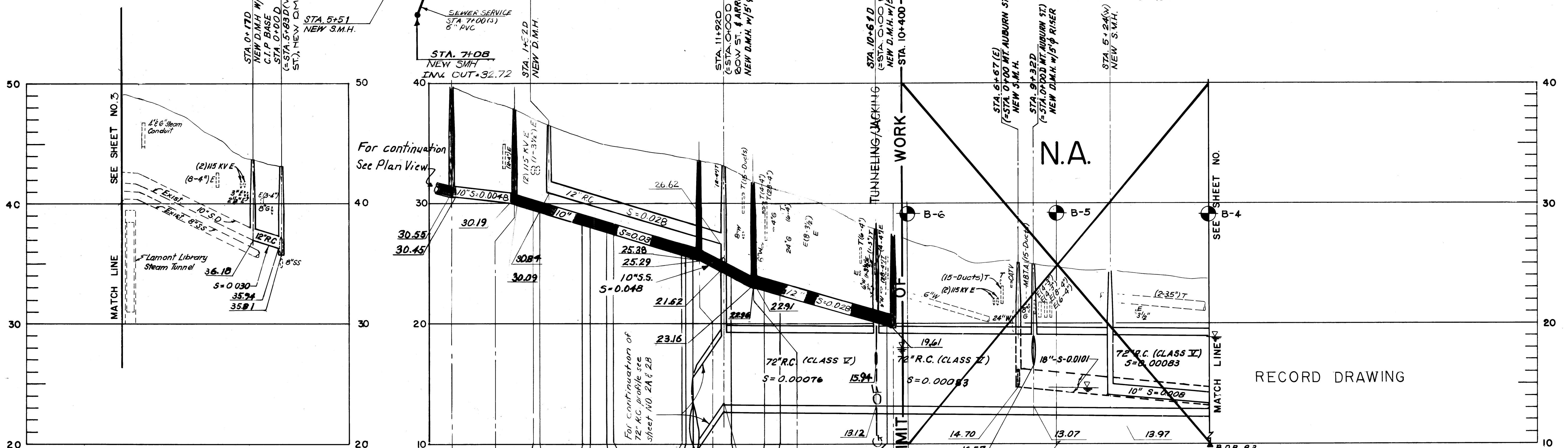


TBM-58 ELEV. 48.17  
CHISELED SQ. ON TOP COR. GRAN. POST OF GRAN. & WOOD FENCE @ N.W. COR. INTER. QUINCY & HARVARD STS.

TBM-60 ELEV. 24.63  
X-CUT RIM (SQUARE) C.E.L.CO. MH. @ S.W. COR. INTER. DEWOLFE & MT. AUBURN STS.

**NOTES:**

- SEE GENERAL NOTE 2, SH. NO. 1. THE APPROXIMATE NUMBER OF SANITARY SERVICES IS 12
- EXIST. 12" CS, 24" DB, 24" S.S. SHALL BE REMOVED WITHIN LIMITS OF CONSTRUCTION.
- EXIST. TEL., GAS, ELECT., C.A.T.V., MBTA DUCTS AND/OR STRUCTURES WHICH ARE PRESENTLY LOCATED WITHIN THE 72" S.D. "LIMITS OF CONSTRUCTION" SHALL BE RELOCATED, OR REMOVED AND REPLACED (BY OTHERS).
- EXIST. WATER MAINS WHICH ARE PRESENTLY LOCATED WITHIN THE 72" S.D. "LIMITS OF CONSTRUCTION" SHALL BE RELOCATED, OR REMOVED AND REPLACED.
- STA. 11+92D TO MATCH LINE; SEE SHEET NO. 3A & 3B FOR PROFILE OF 72" S.D.
- STA. 10+64D TO STA. 24+12D; INSTALLATION OF 72" S.D. SHALL BE BY TUNNELING AND/OR JACKING.
- CONTRACTOR IS ADVISED THAT TWO (2) 115 KV ELECTRIC CONDUITS EXIST IN QUINCY, BOW, DEWOLFE AND MT. AUBURN STREETS AND THAT ALL PRECAUTIONARY MEASURES SHALL BE EXERCISED.
- THE CONTRACTOR SHALL COORDINATE THE RELOCATION OF THE EXISTING 6" WATER LINE WITH THE ADJOINING CONTRACT NO. 1 CONTRACTOR THROUGH THE RESIDENT ENGINEER, SEE GENERAL NOTES NO. 23 AND 24.

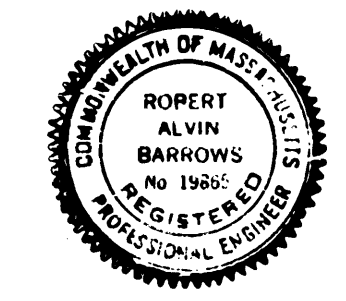


NOTE: LABELING IS MORE ACCURATE THAN GRAPHICS.

REVISION	MADE BY	CHECKED BY	DESCRIPTION

DESIGNED BY: G. M<sup>PC</sup>, N.R.M. SCALE  
 DRAWN BY: P. M<sup>PC</sup>, C. V.V. HORIZ. 1"=40'  
 CHECKED BY: R. A. B. VERT. 1"=4'

APPROVED FOR MGI  
*[Signature]* 7-25-88  
 REG. PROF. ENG. DATE

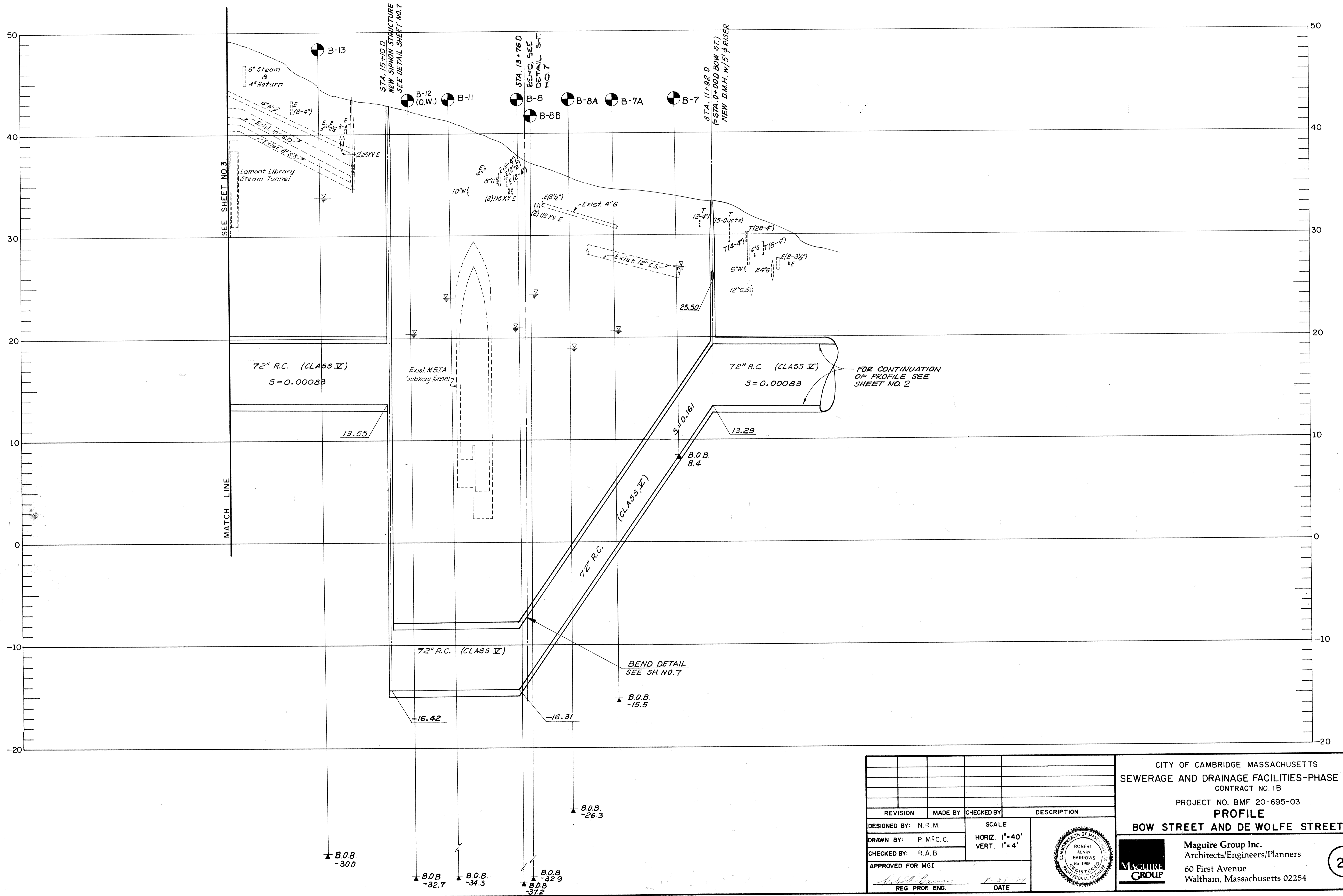


CITY OF CAMBRIDGE MASSACHUSETTS  
 SEWERAGE AND DRAINAGE FACILITIES-PHASE VI  
 CONTRACT NO. 1B

PROJECT NO. BMF 20-695-03  
**QUINCY STREET (1 of 3)**  
**BOW STREET AND DEWOLFE STREET**

Maguire Group Inc.  
 Architects/Engineers/Planners  
 60 First Avenue  
 Waltham, Massachusetts 02254





REVISION	MADE BY	CHECKED BY	DESCRIPTION

DESIGNED BY: N.R.M.	SCALE
DRAWN BY: P.M.C.C.	HORIZ. 1"=40'
CHECKED BY: R.A.B.	VERT. 1"=4'
APPROVED FOR MGI	
REG. PROF. ENG.	DATE

CITY OF CAMBRIDGE MASSACHUSETTS  
 SEWERAGE AND DRAINAGE FACILITIES-PHASE VI  
 CONTRACT NO. 1B  
 PROJECT NO. BMF 20-695-03  
**PROFILE**  
**BOW STREET AND DE WOLFE STREET**

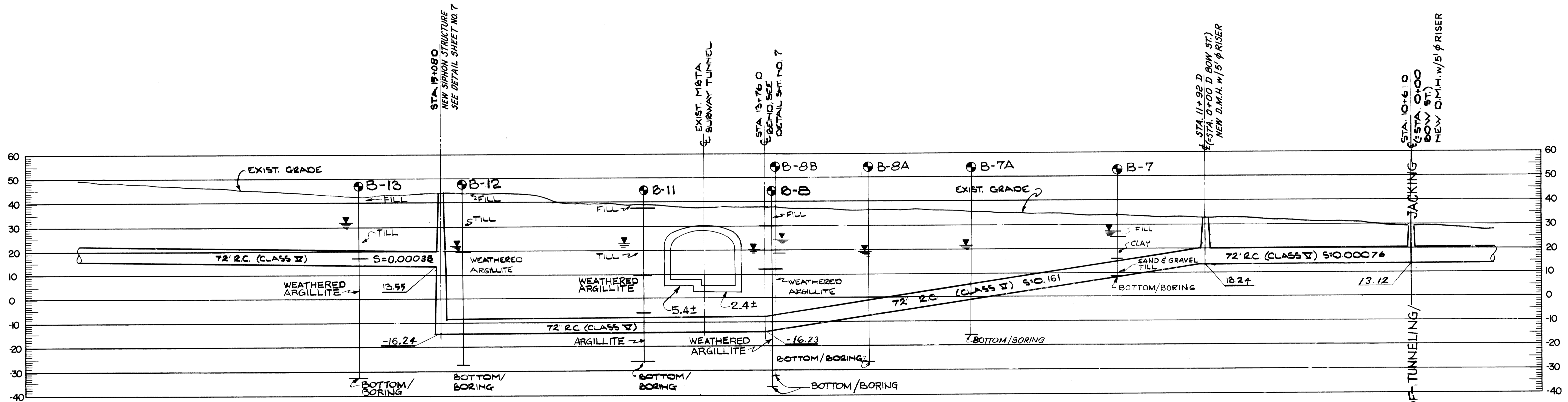
**Maguire Group Inc.**  
 Architects/Engineers/Planners  
 60 First Avenue  
 Waltham, Massachusetts 02254

**MAGUIRE GROUP**

ROBERT ALVIN BARRONS  
 REGISTERED PROFESSIONAL ENGINEER

2A



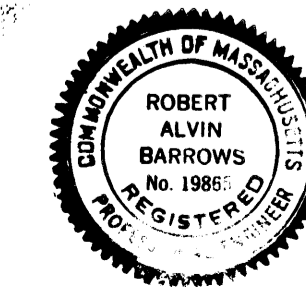


← @ STA. 24+120; NEW DMH;  
END OF TUNNELING  
AND/OR JACKING.

PROFILE  
SCALE: 1"=20'  
HORIZ. &  
VERT.

RECORD DRAWING

REVISION	MADE BY	CHECKED BY	DESCRIPTION
DESIGNED BY: G.M.C.	SCALE		
DRAWN BY: JTC	AS SHOWN		
CHECKED BY: R. A. B.			
APPROVED FOR MGI			
<i>Robert Barrows</i>	8-25-89	DATE	
REG. PROF. ENG.			



CITY OF CAMBRIDGE MASSACHUSETTS  
SEWERAGE AND DRAINAGE FACILITIES-PHASE VII  
CONTRACT NO. 1B  
PROJECT NO. BMF 20-695-03  
**PROFILE**  
**SIPHON-72-INCH STORM DRAIN**

**Maguire Group Inc.**  
Architects/Engineers/Planners  
60 First Avenue  
Waltham, Massachusetts 02254