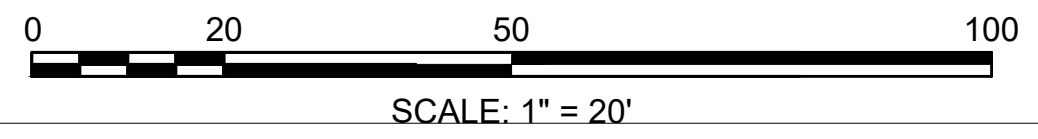
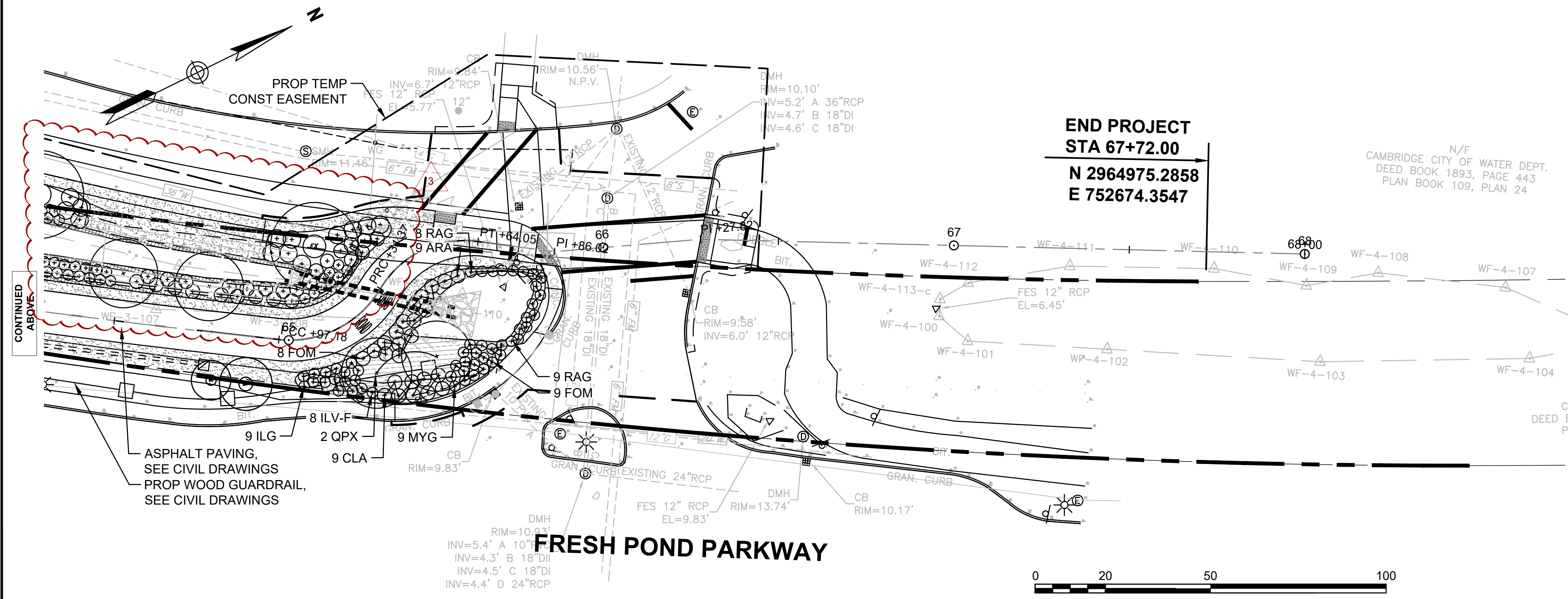
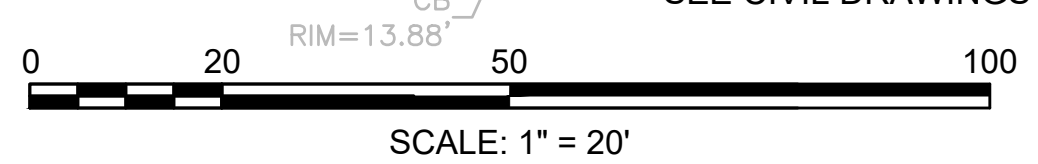
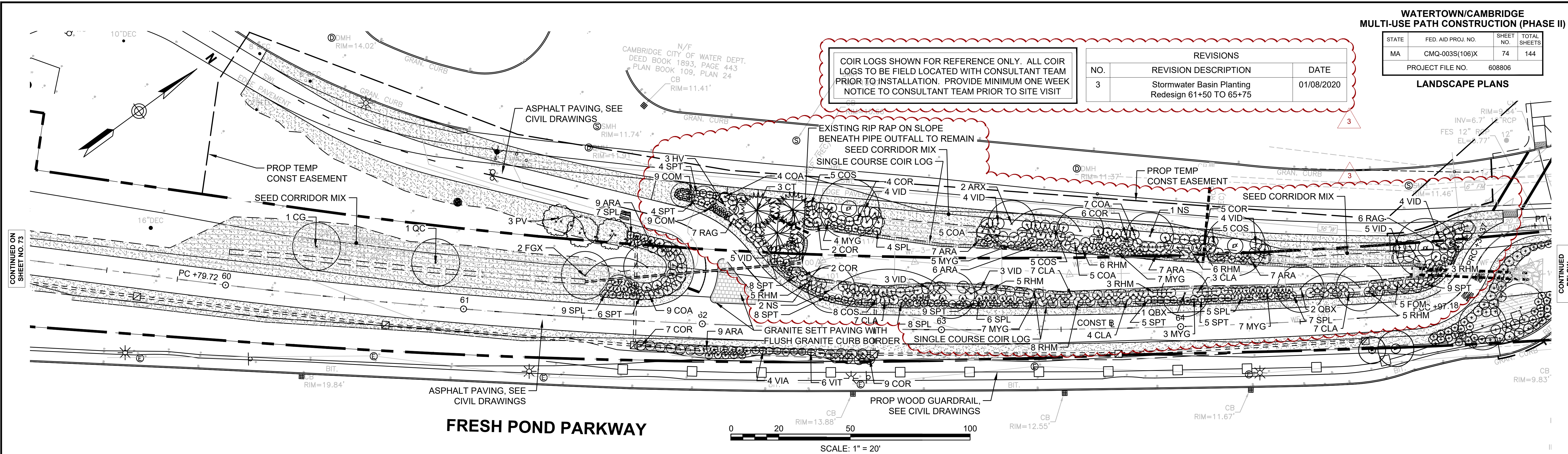


STATE	FED. AID PROJ. NO.	SHEET NO.	TOTAL SHEETS
MA	CMQ-003S(106)X	74	144
PROJECT FILE NO. 608806			

LANDSCAPE PLANS

REVISIONS		
NO.	REVISION DESCRIPTION	DATE
3	Stormwater Basin Planting Redesign 61+50 TO 65+75	01/08/2020

COIR LOGS SHOWN FOR REFERENCE ONLY. ALL COIR LOGS TO BE FIELD LOCATED WITH CONSULTANT TEAM PRIOR TO INSTALLATION. PROVIDE MINIMUM ONE WEEK NOTICE TO CONSULTANT TEAM PRIOR TO SITE VISIT



* = REVISED PLANT QUANTITIES FOR REVISION 3

PLANT SCHEDULE (THIS SHEET ONLY) see Sheet 75 for full plant schedule

SYM	QUANTITY	BOTANICAL NAME	COMMON NAME	SIZE	COMMENTS
TREES					
ARX	2*	Acer rubrum	Red Maple - 'October Glory'	3"-3.5" cal.	
CG	1	Carya glabra	Pignut Hickory	2"-2.5" cal.	
CT	1	Chamaecyparis thyoides	Eastern White Cedar	7'-8' FT.	
FGX	2	Fagus grandifolia	American Beech	3"-3.5" cal.	
HV	3	Hamamelis virginiana	Common Witchhazel	3'-4' FT.	Clump
NS	3*	Nyssa sylvatica	Black Tupelo	2"-2.5" cal.	
PV	3	Prunus virginiana 'Shubert'	Shubert' Choke Cherry	1.5"-2" cal.	
QBX	3*	Quercus bicolor	Swamp White Oak	2"-2.5" cal.	
QC	1	Quercus coccinea	Scarlet Oak	10'-12' FT.	
QPX	2	Quercus palustris	Pin Oak	2"-2.5" cal.	
SHRUBS					
ARA	54*	Aronia arbutifolia	Red Chokeberry	18"-24" HT.	3' o.c. spacing
CLA	37*	Clethra alnifolia	Summersweet	18"-24" HT.	4' o.c. spacing
COM	18*	Comptonia peregrina	Sweetfern	1 GAL POT	18" o.c. spacing
COA	30*	Cornus amomum	Silky Dogwood	18"-24" HT.	4' o.c. spacing
COR	35*	Cornus racemosa	Gray Dogwood	18"-24" HT.	4' o.c. spacing
COS	23*	Cornus sericea	Red Osier Dogwood	18"-24" HT.	4' o.c. spacing
FOM	22*	Fothergilla minor	Dwarf Fothergilla	18"-24" HT.	3' o.c. spacing
ILG	9	Ilex glabra	Inkberry	24"-36" HT.	3' o.c. spacing
ILV-f	8	Ilex verticillata (female)	Winterberry (female)	18"-24" HT.	3' o.c. spacing
MYG	42*	Myrica gale	Sweetgale	18"-24" HT.	3' o.c. spacing
RAG	30*	Rhus aromatica 'Gro-Low'	Gro-Low Fragrant Sumac	18"-24" HT.	4' o.c. spacing
RHM	41*	Rhododendron maximum	Rosebay Rhododendron	30"-36" HT.	5' o.c. spacing
SPL	46*	Spirea latifolia	Broad-Leaf Meadowsweet	24"-30" HT.	3' o.c. spacing
SPT	58*	Spirea tomentosa	Steeplebush	24"-30" HT.	3' o.c. spacing
VIA	4	Viburnum acerifolium	Maple Leaf Viburnum	18"-24" HT.	4' o.c. spacing
VID	32*	Viburnum dentatum	Arrowwood Viburnum	24"-36" HT.	5' o.c. spacing
VIT	6	Viburnum trilobum	American Cranberrybush	24"-36" HT.	4' o.c. spacing

LEGEND

PROPERTY LINE	CEMCONC PAVING, SEE CIVIL	GRANITE TREAD STAIR WITH STAINLESS STEEL HANDRAIL	SEED CORRIDOR MIX	EXISTING TREE OF NOTE TO REMAIN AND BE PROTECTED
PROPOSED BIKEWAY	POROUS FLEXIBLE PAVING	SITE BENCH W/ CONCRETE PAD	WOODY SEEDLINGS WITH SEED CORRIDOR MIX	DECIDUOUS TREE
LIMIT OF GRADING	GRANITE PIER AND CONCRETE UNIT PAVING	SITE BENCH W/ CONCRETE PAD AND COMPANION SPACE	COMPOST MULCH AND SEED CORRIDOR MIX	EVERGREEN TREE
PROPOSED DRAINAGE	GRANITE SETT PAVING WITH FLUSH GRANITE CURB BORDER	COIR LOG W/ WOODY SEEDLINGS	CONTINUOUS MULCH BED	FLOWERING TREE
	ENGRAVED BOULDER	VINE	SHRUBS	LIGHTING HANDHOLE AND CONDUIT

NOTE: REFER TO SHEET 75 FOR OVERALL PLANTING SCHEDULE

== □ == LIGHTING HANDHOLE AND CONDUIT

CONTINUED ON SHEET NO. 73

CONTINUED BELOW

PLANT SCHEDULE				
QTY	BOTANICAL NAME	COMMON NAME	SIZE	COMMENTS
WOODY SEEDLINGS for upland slope stabilization				
598	Aronia arbutifolia	Red Chokeberry	5" Seedling	18" o.c. spacing, container
598	Comptonia peregrina	Sweetfern	5" Seedling	18" o.c. spacing, container
598	Cornus racemosa	Grey Dogwood	5" Seedling	18" o.c. spacing, container
598	Hamamelis virginiana	Common Witchhazel	5" Seedling	18" o.c. spacing, container
598	Myrica pennsylvanica	Bayberry	5" Seedling	18" o.c. spacing, container
598	Rhus aromatica 'Gro-low'	Gro-low Fragrant Sumac	5" Seedling	18" o.c. spacing, container
598	Viburnum acerifolium	Mapleleaf Viburnum	5" Seedling	18" o.c. spacing, container
SEED MIXES				
	Seed Corridor Mix			Refer to spec.

PLANT SCHEDULE						PLANT QUANTITIES BY SHEET											
SYM	PROJECT QUANTITY	BOTANICAL NAME	COMMON NAME	SIZE	COMMENTS	64	65	66	67	68	69	70	71	72	73	74	
* = REVISED PLANT QUANTITIES FOR REVISION 3																	
TREES																	
AR	5	Acer rubrum	Red Maple - 'October Glory'	1"-2" cal.							1	1	1	2			
ARX	4*	Acer rubrum	Red Maple - 'October Glory'	3"-3.5" cal.		2										*2	
AI	5	Alnus incana	Speckled Alder	5 GAL	Clump									3	2		
AC	7	Amelanchier canadensis	Shadblow Serviceberry	4'-5' FT.	Clump (5 stem min)	1	2					2			2		
BA	9	Betula alleghaniensis	Yellow Birch	5'-6' FT.	Clump		2	3		2				2			
BAX	3	Betula alleghaniensis	Yellow Birch	12"-14' FT.	Clump	3											
BL	6	Betula lenta	Black Birch	12"-14' FT.	Clump		2	2							2		
BLX	2	Betula lenta	Black Birch	8'-10' FT.	Clump	2											
CC	4	Carpinus caroliniana	American Hornbeam	8'-10' FT.		1				3							
CG	4	Carya glabra	Pignut Hickory	2-2.5" cal.					1					1	1	1	
CO	7	Carya ovata	Shagbark Hickory	8'-10' FT.		1	1	2	1		1			1			
CE	13	Cercis canadensis	Eastern Redbud	1.5"-2" cal.		3					2	2			6		
CT	19	Chamaecyparis thyoides	Eastern White Cedar	7'-8' FT.			7	2	3			5			1	1	
CR	3	Cornus x rutgersensis	Stellar Pink Dogwood	7'-8' FT.			3										
FG	8	Fagus grandifolia	American Beech	2"-2.5" cal.					1	2			2		1		
FGX	3	Fagus grandifolia	American Beech	3"-3.5" cal.							1					2	
HV	12	Hamamelis virginiana	Common Witchhazel	3'-4' FT.	Clump					7	2					3	
IO-f	11	Ilex opaca (female)	American Holly (female)	6'-7' FT.				2	2	2			4	1			
IO-m	2	Ilex opaca (male)	American Holly (male)	6'-7' FT.					1					1			
JV	7	Juniperus virginiana	Eastern Red Cedar	4'-5' FT.		3		2						2			
LT	5	Liriodendron tulipifera	Tuliptree	1.5"-2" cal.		2							1	1	1		
LTX	2	Liriodendron tulipifera	Tuliptree	3"-3.5" cal.						2							
NS	13*	Nyssa sylvatica	Black Tupelo	2"-2.5" cal.		2			2				1	1	4	*3	
OV	4	Ostrya virginiana	Hop Hornbeam	8'-10' FT.		2		1				1					
PG	11	Picea glauca	White Spruce	5'-6' FT.		2	3	2					2	2			
PGX	3	Picea glauca	White Spruce	7'-8' FT.		3											
PM	29	Picea mariana	Black Spruce	8'-10' FT.		4	3	2	3		9	4	4				
PR	12	Pinus resinosa	Red Pine	5'-6' FT.			2	2	4				3	1			
PPX	2	Pinus rigida	Pitch Pine	7'-8' FT.		2											
PP	13	Pinus rigida	Pitch Pine	4'-5' FT.			3	2				2	2	2	2		
PS	15	Pinus strobus	Eastern White Pine	5'-6' FT.			4		3	2		6					
PV	5	Prunus virginiana 'Shubert'	Shubert' Choke Cherry	1.5"-2" cal.			2									3	
QA	1	Quercus alba	White Oak	1.5"-2" cal.										1			
QB	5	Quercus bicolor	Swamp White Oak	1.5"-2" cal.		1	1		1					1			
QBX	4*	Quercus bicolor	Swamp White Oak	2"-2.5" cal.							1					*3	
QC	5	Quercus coccinea	Scarlet Oak	10"-12' FT.			1		1				1		1	1	
QCX	1	Quercus coccinea	Scarlet Oak	2"-2.5" cal.						1							
QP	3	Quercus palustris	Pin Oak	1"-2" cal.		1							1	1			
QPX	5	Quercus palustris	Pin Oak	2"-2.5" cal.						3						2	
QR	1	Quercus rubra	Red Oak	1"-2" cal.										1			
QRX	4	Quercus rubra	Red Oak	2"-2.5" cal.		2				2							
SA	10	Sassafras albidum	Sassafras	1.5"-2" cal.										7	3		
Total all Trees						287	37	36	21	26	24	18	37	21	21	25	21
SHRUBS																	
<i>Handle Moist Conditions</i>																	
ARA	132*	Aronia arbutifolia	Red Chokeberry	18"-24" HT.	3' o.c. spacing	22			9				8	23		16	*54
CLA	59*	Clethra alnifolia	Summersweet	18"-24" HT.	4' o.c. spacing			5						8		9	*37
COA	73*	Cornus amomum	Silky Dogwood	18"-24" HT.	4' o.c. spacing	3							16		24		*30
COR	79*	Cornus racemosa	Gray Dogwood	18"-24" HT.	4' o.c. spacing			5					30		9		*35
COS	67*	Cornus sericea	Red Osier Dogwood	18"-24" HT.	4' o.c. spacing	8				4			14		9		*23
FOM	94*	Fothergilla minor	Dwarf Fothergilla	18"-24" HT.	3' o.c. spacing	20					7	8	29		8		*22
ILG	55	Ilex glabra	Inkberry	24"-36" HT.	3' o.c. spacing				14			7	17		8		9
ILV-f	48	Ilex verticillata (female)	Winterberry (female)	18"-24" HT.	3' o.c. spacing						27		13				8
ILV-m	4	Ilex verticillata (male)	Winterberry (male)	18"-24" HT.	3' o.c. spacing						2		2				
LIB	33	Lindera benzoin	Spicebush	18"-24" HT.	4' o.c. spacing			7					5	6	15		
RHV	70	Rhododendron viscosum	Swamp Azalea	18"-24" HT.	3' o.c. spacing							31		15		24	
SPL	105*	Spirea latifolia	Broad-Leaf Meadowsweet	24"-30" HT.	3' o.c. spacing							23	13	7		16	*46
SPT	112*	Spirea tomentosa	Steeplebush	24"-30" HT.	3' o.c. spacing				8				15	13	9		*58
VAC	45	Vaccinium corymbosum	Highbush Blueberry	24"-36" HT.	4' o.c. spacing							4	7	21		13	
VID	48*	Viburnum dentatum	Arrowwood Viburnum	24"-36" HT.	5' o.c. spacing					5		5	6				*32
<i>Handle Drier Conditions</i>																	
CAF	65	Calycanthus floridus	Carolina Allspice	24"-30" HT.	4' o.c. spacing						22	23	20				
COM	132*	Comptonia peregrina	Sweetfern	1 GAL. POT	18" o.c. spacing								8		52	54	*18
KAL	31	Kalmia latifolia	Mountain Laurel	24"-30" HT.	5' o.c. spacing						13	18					
KAA	31	Kalmia angustifolia	Sheep Laurel	24"-30" HT.	5' o.c. spacing							20	6		5		
MYG	108*	Myrica gale	Sweetgale	18"-24" HT.	3' o.c. spacing						12		30	9	15		*42
MYP	65	Myrica pennsylvanica	Bayberry	24"-30" HT.	5' o.c. spacing							34	15		7		
RHM	95*	Rhododendron maximum	Rosebay Rhododendron	30"-36" HT.	5' o.c. spacing							22	21	6	5		*41
RAG	82*	Rhus aromatica 'Gro-Low'	Gro-Low Fragrant Sumac	18"-24" HT.	4' o.c. spacing	27				16	9						*30
VIA	59	Viburnum acerifolium	Maple Leaf Viburnum	18"-24" HT.	4' o.c. spacing			5				8		16		26	4
VIT	50	Viburnum trilobum	American Cranberrybush	24"-36" HT.	4' o.c. spacing							15	6	15		8	6
Total						1742	89	0	53	0	25	180	264	265	91	280	495
GROUND COVER, FERNS, AND VINES																	
DRM	87	Dryopteris marginalis	Marginal Wood Fern	1 GAL. POT	18" o.c. spacing									24	10	53	
JCC	79	Juniper conferta	Shore Juniper	2 GAL. POT	24" o.c. spacing	40		39									
HAP	20	Hydrangea anomala petiolaris	Climbing Hydrangea	1 GAL. POT	As Shown						20						
PTA	83	Pteridium aquilinum	Bracken Fern	1 GAL. POT	18" o.c. spacing										34	49	
Total						269	40	0	39	0	0	20	0	24	44	102	0

**WATERTOWN/CAMBRIDGE
MULTI-USE PATH CONSTRUCTION (PHASE II)**

STATE	FED. AID PROJ. NO.	SHEET NO.	TOTAL SHEETS
MA	CMQ-003S(106)X	75	144
PROJECT FILE NO.		608806	

LANDSCAPE PLANS

REVISIONS

NO.	REVISION DESCRIPTION	DATE
3	Stormwater Basin Planting Redesign 61+50 TO 65+75	01/08/2020

3